

Itga2b-2A-CreERT2

Nomenclature	C57BL/6Smoc- <i>Itga2b</i> ^{em(2A-CreERT2-WPRE-pA)1Smoc}
Cat. NO.	NM-KI-225072
Strain State	Repository Live

Gene Summary

Gene Symbol Itga2b	Synonyms	CD41; CD41B; GpIIb; AI172977; alphaIIb
	NCBI ID	16399
	MGI ID	96601
	Ensembl ID	ENSMUSG00000034664
	Human Ortholog	ITGA2B

Model Description

2A-CreERT2-WPRE-pA expression cassette was knocked into the *Itga2b* gene .

*Literature published using this strain should indicate: *Itga2b*-2A-CreERT2 mice (Cat. NO. NM-KI-225072) were purchased from Shanghai Model Organisms Center, Inc..

Validation Data

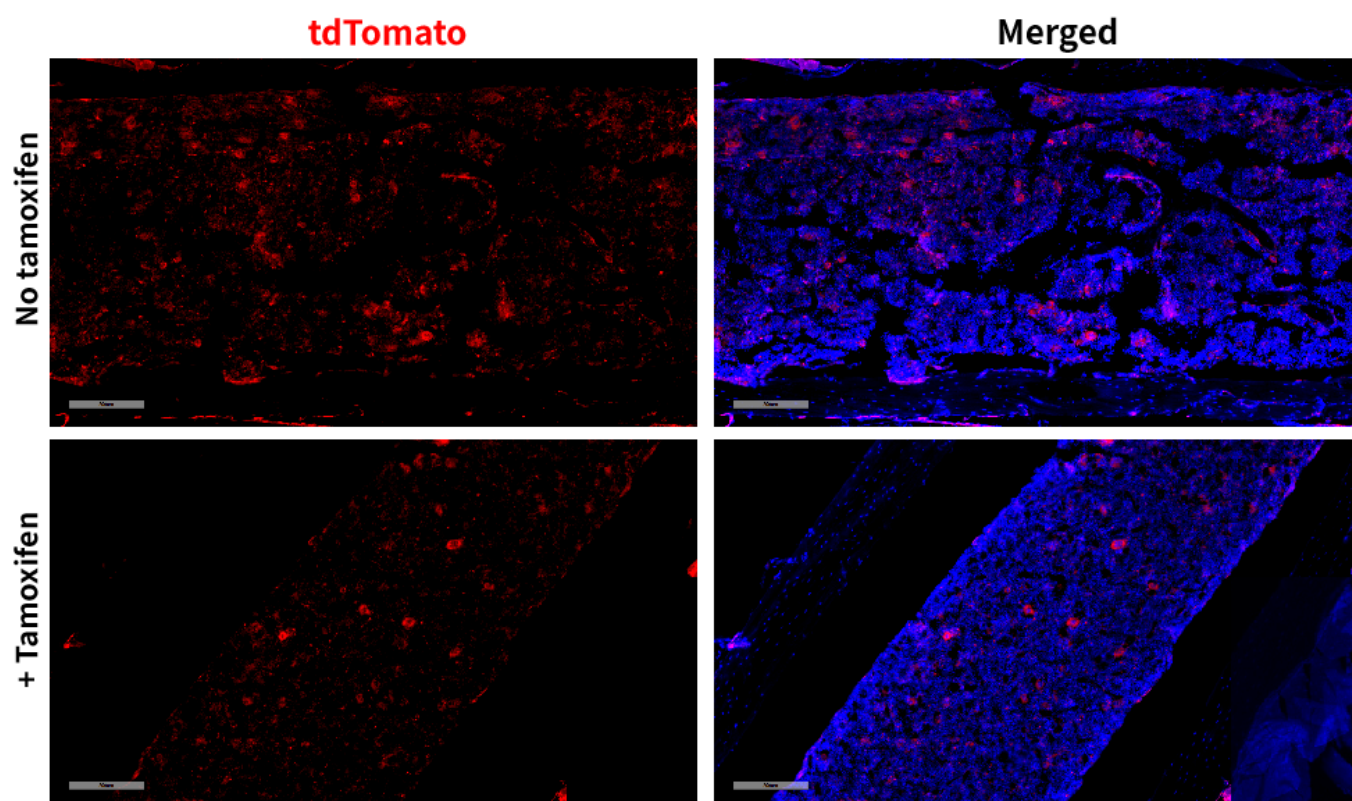


Fig1. CreERT2 mediated recombination in bone marrow of *Itga2bCreERT2/+; Rosa26tdTomato/+* mouse.

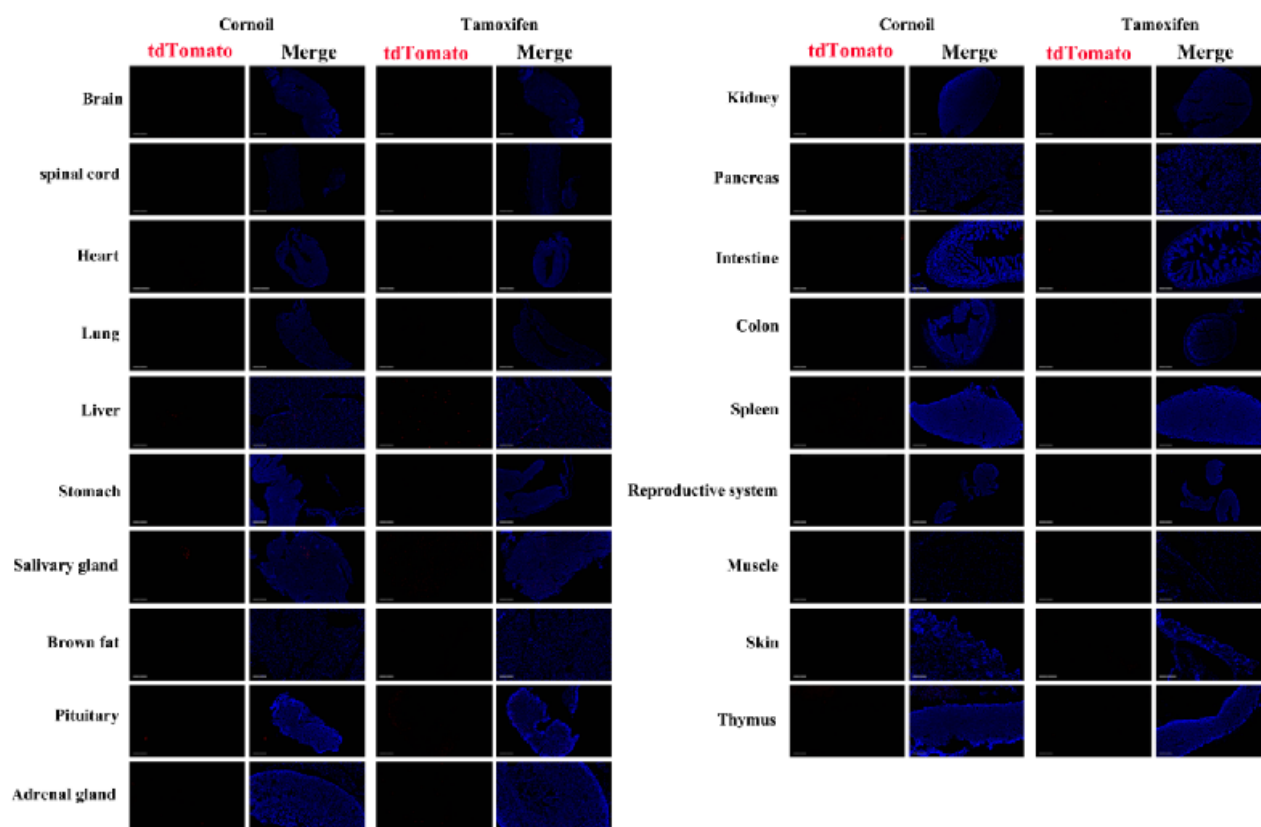


Fig2. Detection of tdTomato(red) in various tissues of *Itga2bCreERT2/+; Rosa26tdTomato/+* mouse.

Itga2bCreERT2/+;Rosa26tdTomato/+ mouse. Expression tissues include: bone marrow, salivary gland, pituitary gland, skin. A few cells expressed in lung, liver, stomach, adrenal gland, kidney, pancreas, small intestine, colon, spleen. Tissues that unexpressed include brain, spinal cord, heart, ovary, muscle, brown fat and thymus. (8-weeks old, female) (For more detailed information please contact our technical advisor.)
