

Prokr2-2A-Dre

Nomenclature	C57BL/6Smoc- <i>Prokr2</i> ^{em1(2A-Dre)Smoc}
Cat. NO.	NM-KI-231591
Strain State	Sperm cryopreservation

Gene Summary

Gene Symbol Prokr2	Synonyms	PKR2; Gpr73l1; Gpcr73l1; EG-VEGRF2; B830005M06Rik
	NCBI ID	246313
	MGI ID	2181363
	Ensembl ID	ENSMUSG00000050558
	Human Ortholog	PROKR2

Model Description

The 2A-Dre expression cassette was knocked into the Prokr2 gene stop codon site.

*Literature published using this strain should indicate: Prokr2-2A-Dre mice (Cat. NO. NM-KI-231591) were purchased from Shanghai Model Organisms Center, Inc..

Validation Data

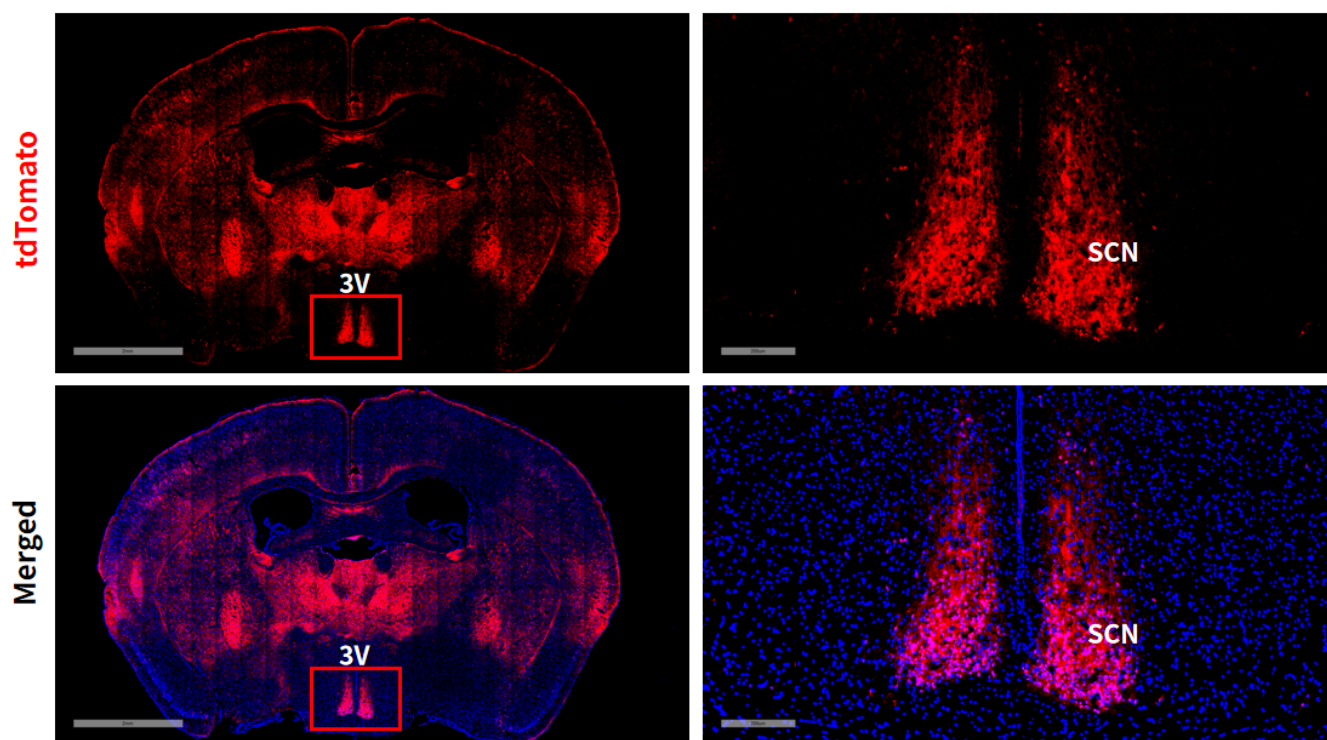


Fig1. Dre mediated recombination in brain of *Prokr2^{DreERT2/+}; Rosa26^{tdTomato/+}* mouse. 3V: third ventricle; SCN: suprachiasmatic nucleus

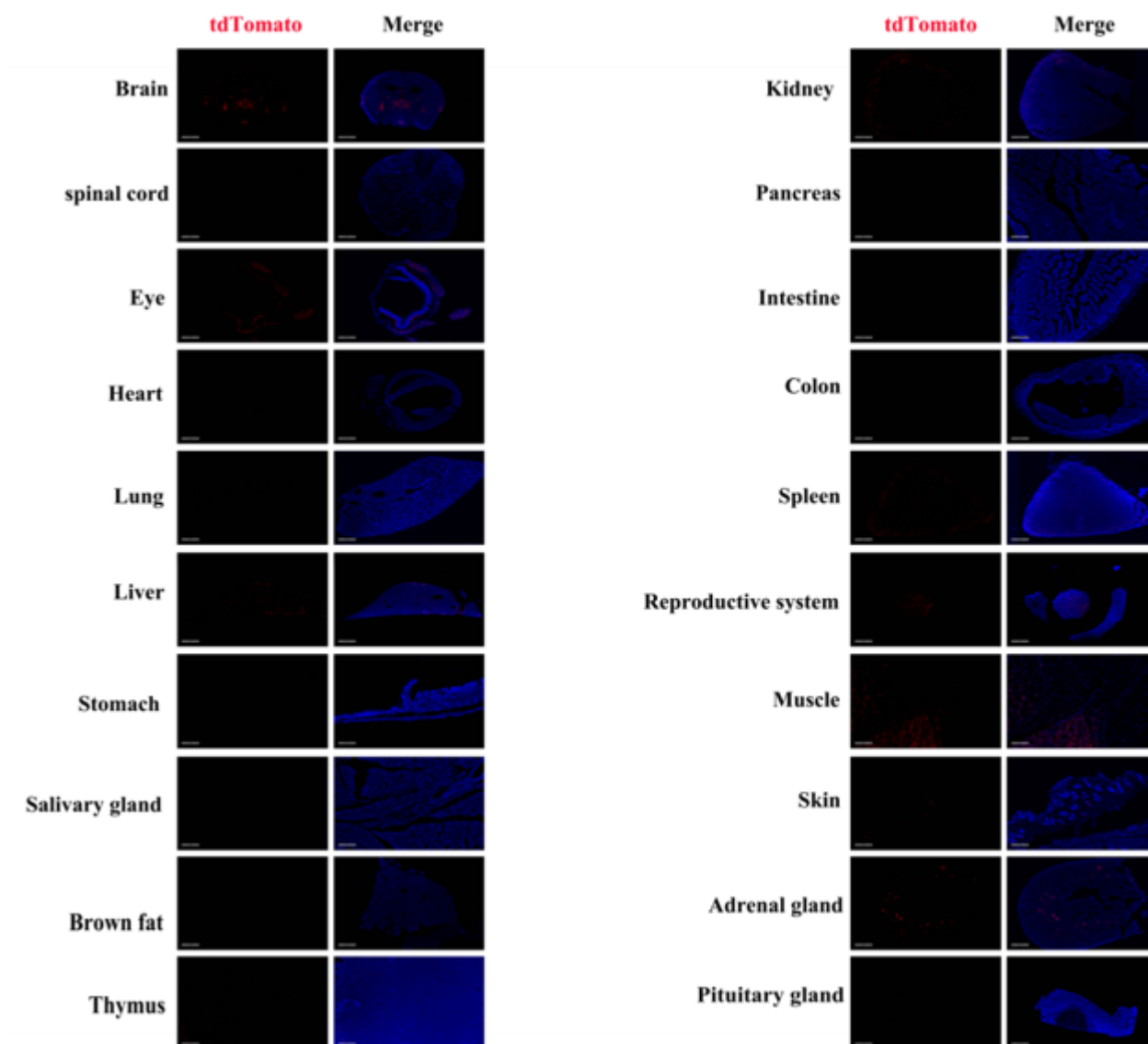


Fig2. Detection of tdTomato(red) in various tissues of *Prokr2^{DreERT2/+};Rosa26^{tdTomato/+}* mouse. Expression tissues include: brain, liver, kidney, spleen, testis, and adrenal gland. A few cells expressed in lungs, muscles, skin, pituitary gland. Tissues that unexpressed include spinal cord, retina, heart, stomach, salivary gland, brown fat, pancreas, small intestine, colon.(12-weeks old, male) (For more detailed information please contact our technical advisor.)