

Tert-CreERT2-2A-EGFP

Nomenclature	C57BL/6Smoc- <i>Tert</i> ^{em1(CreERT2-2A-GFP-WPRE-PA)Smoc}
Cat. NO.	NM-KI-18037
Strain State	Embryo cryopreservation

Gene Summary

Gene Symbol Tert	Synonyms	TR; TP2; TRT; EST2; TCS1
	NCBI ID	21752
	MGI ID	1202709
	Ensembl ID	ENSMUSG00000021611
	Human Ortholog	TERT

Model Description

A CreERT2-2A-GFP-WPRE-PA expression cassette was knocked into the Tert gene start codon site by homologous recombination.

Research Application: Cre recombinase tool

*Literature published using this strain should indicate: Tert-CreERT2-2A-EGFP mice (Cat. NO. NM-KI-18037) were purchased from Shanghai Model Organisms Center, Inc..

Validation Data

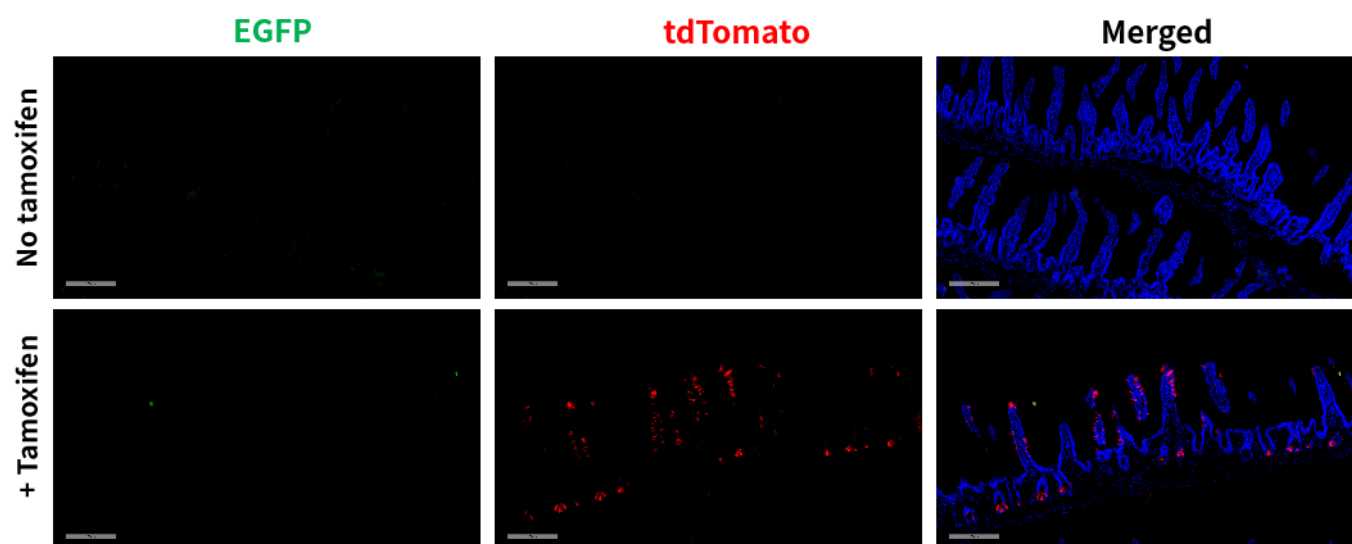


Fig1. CreERT2 mediated recombination in small intestine of TertCreERT2-EGFP/+;Rosa26tdTomato/+ mouse.

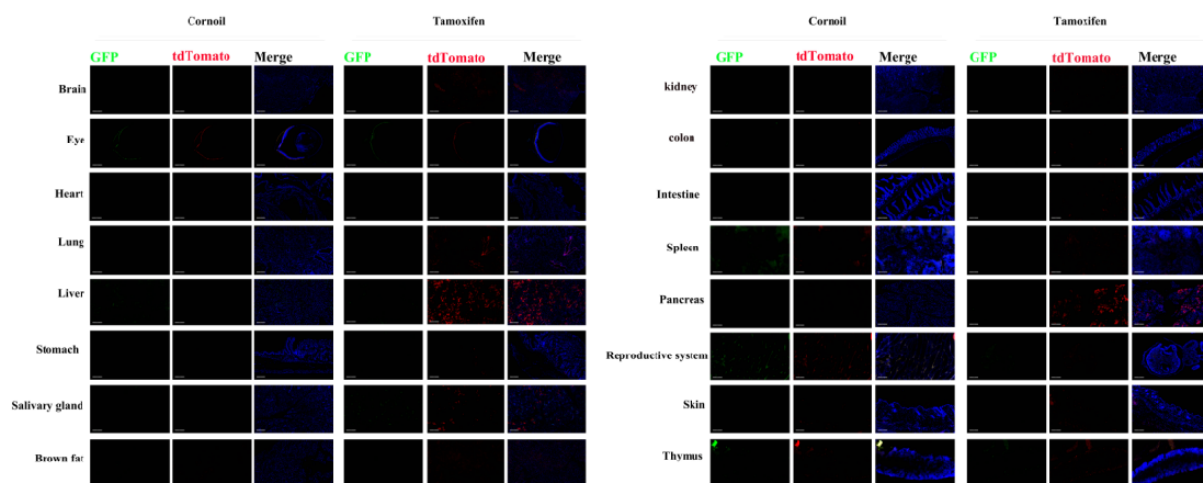


Fig2. Detection of EGFP(green) and tdTomato(red) in various tissues of TertCreERT2-EGFP/+;Rosa26tdTomato/+ mouse. Expression tissues include: small intestine, lung, liver, salivary gland, kidney, pancreas. A few cells expressed in brain, stomach, colon, spleen, skin, thymus, ovary. Tissues that unexpressed include eye, heart, brown fat. No significant EGFP positive signal was detected. (6.5-months old, female) (For more detailed information please contact our technical advisor.)