

Ccr2-KO

Nomenclature	C57BL/6Smoc- <i>Ccr2</i> ^{em1Smoc}
Cat. NO.	NM-KO-190018
Strain State	Repository Live

Gene Summary

Gene Symbol Ccr2	Synonyms	Ckr2; Ccr2a; Ccr2b; Ckr2a; Ckr2b; mJe-r; Cmkbr2; Cc-ckr-2
	NCBI ID	12772
	MGI ID	106185
	Ensembl ID	ENSMUSG00000049103
	Human Ortholog	CCR2

Model Description

This Ccr2 knockout mouse model was generated by knocking out the exon 3 region of the Ccr2 .

Research Application: Immune-related

*Literature published using this strain should indicate: Ccr2-KO mice (Cat. NO. NM-KO-190018) were purchased from Shanghai Model Organisms Center, Inc..

Validation Data

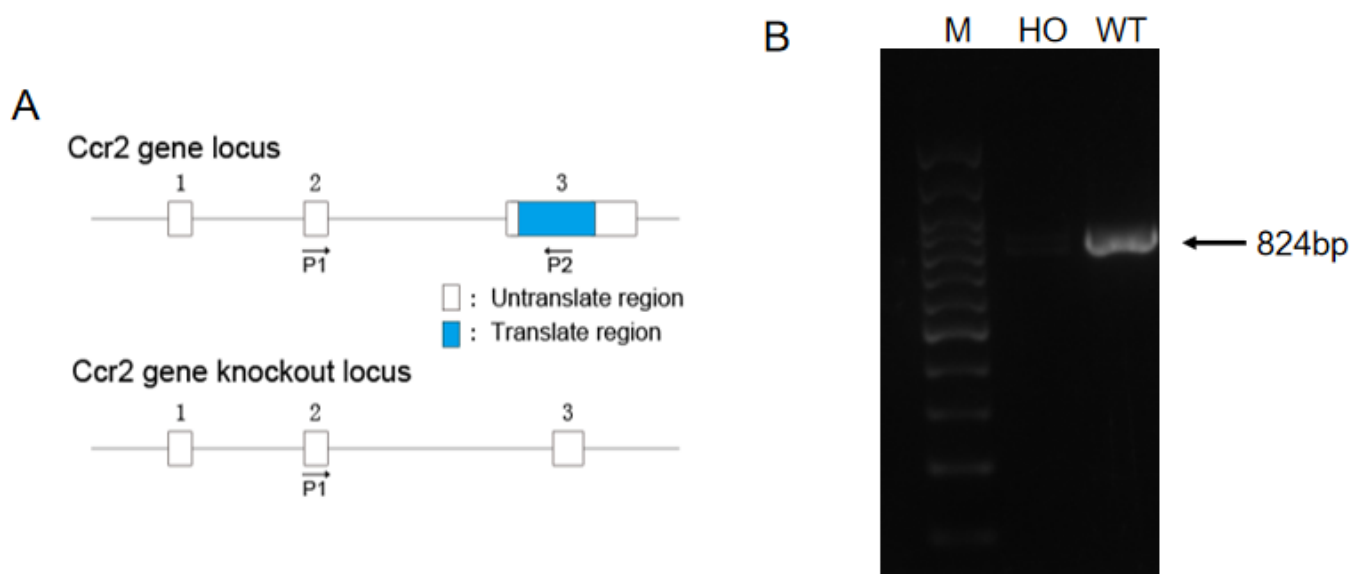


Fig1. Validation of *Ccr2* gene expression by RT-PCR.(A) Schematic diagram of primer design; (B) No product was obtained from *Ccr2* knockout homozygous mice, and the wild-type mice could obtain the 824bp target PCR product. (M, DNA marker; HO, homozygous; WT, wild type)

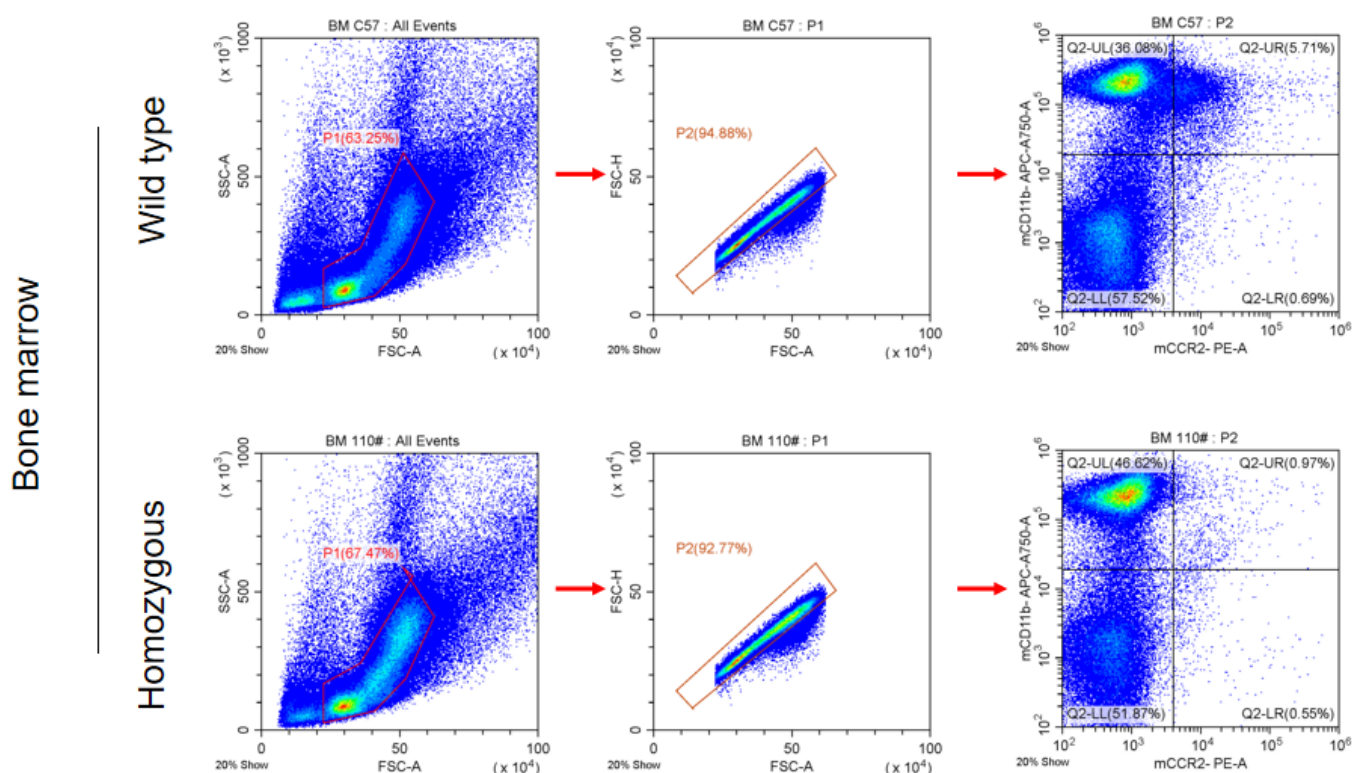


Fig2. Validation of CCR2 expression in the bone marrow by FACS. CCR2 expression could not be detected on CD11b⁺ cells of the *Ccr2* knockout homozygous mice.

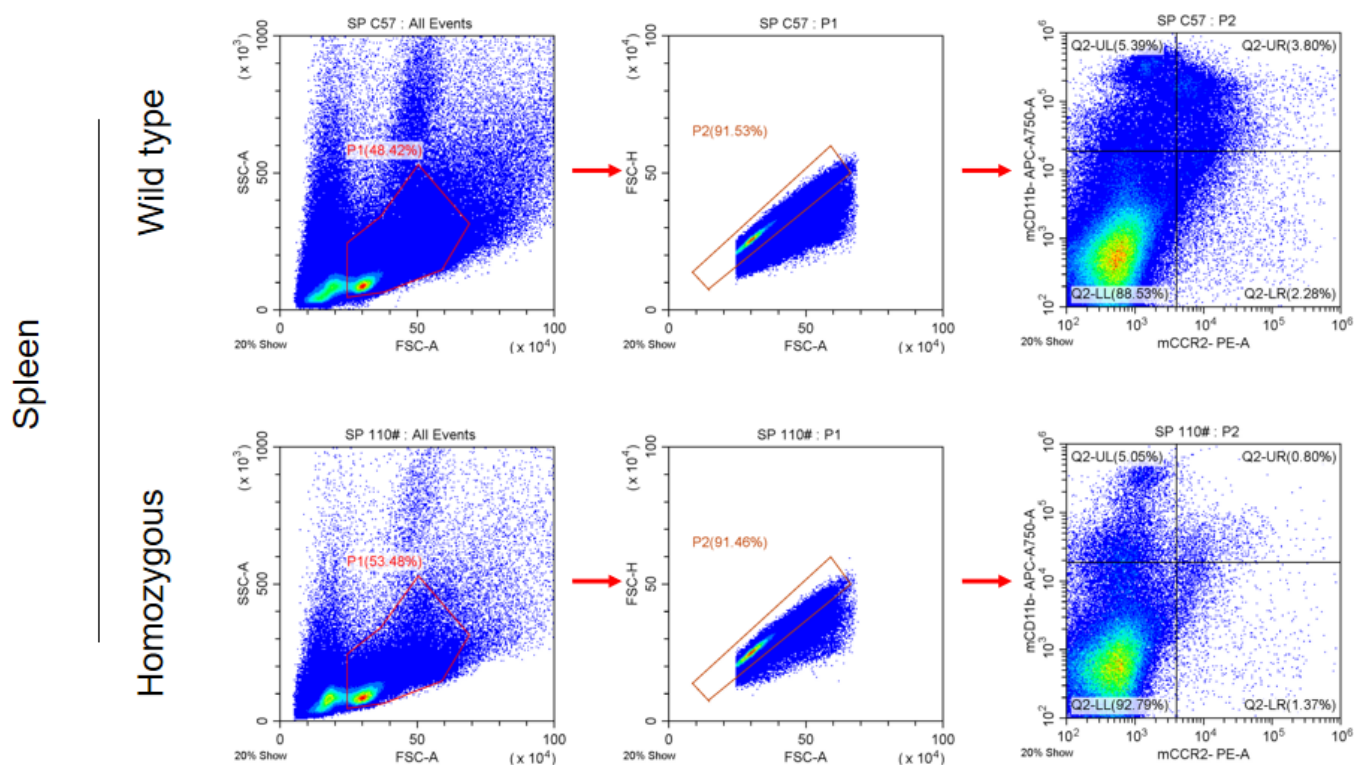


Fig3. Validation of CCR2 expression in the spleen by FACS. CCR2 expression could not be detected on CD11b+ cells of the *Ccr2* knockout homozygous mice.

Publications

[The Effect of Lymphangiogenesis in Transplant Arteriosclerosis](#)

References: Circulation