

# Lyz2-IRES-DTRGFP

<b>Nomenclature</b>	C57BL/6Smoc- <i>Lyz2</i> <sup>em3(IRES-DTRGFP)Smoc</sup>
<b>Cat. NO.</b>	NM-KI-190041
<b>Strain State</b>	Repository Live

## Gene Summary

<b>Gene Symbol</b> <b>Lyz2</b>	<b>Synonyms</b>	Lys; Lzm; Lzp; Lysm; Lyzs; Lyzf2; Lzm-s1; AI326280
	<b>NCBI ID</b>	<a href="#">17105</a>
	<b>MGI ID</b>	<a href="#">96897</a>
	<b>Ensembl ID</b>	<a href="#">ENSMUSG00000069516</a>
	<b>Human Ortholog</b>	LYZ2

## Model Description

A IRES-DTRGFP expression cassette was knocked into the Lyz2 gene stop codon site.

**Research Application:** DTR mouse

\*Literature published using this strain should indicate: Lyz2-IRES-DTRGFP mice (Cat. NO. NM-KI-190041) were purchased from Shanghai Model Organisms Center, Inc..

## Validation Data

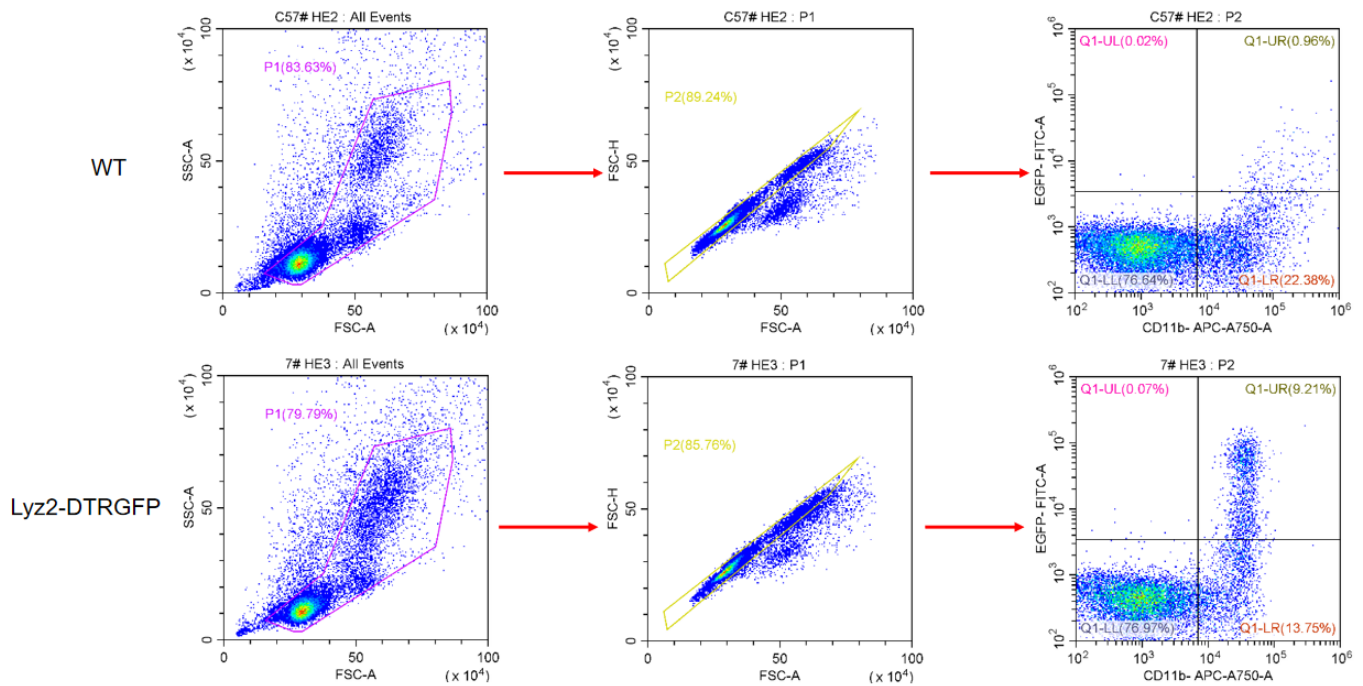


Fig1. Analysis of GFP expression by FACS . The Lyz2-DTRGFP mouse expresses GFP on CD11b+ cells.

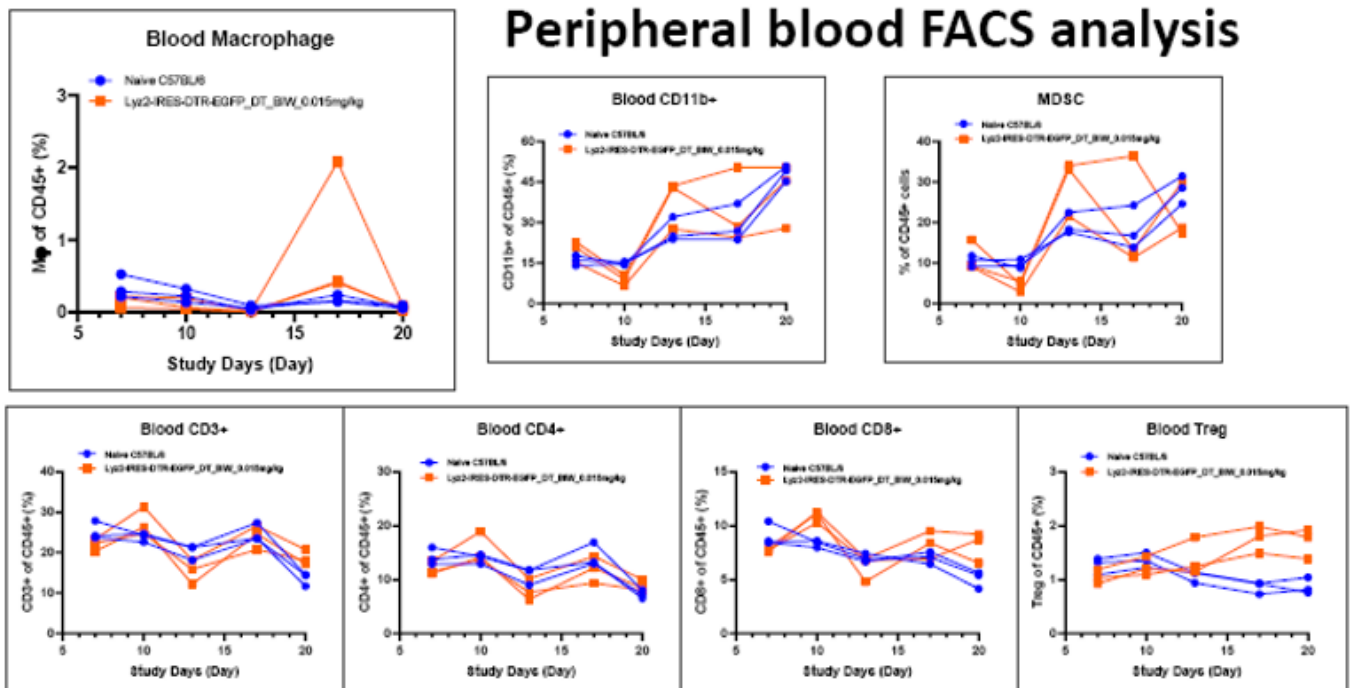


Fig2. Analysis of the level of different immune cells in PBMC by FACS (See Figure 4 for details of diphtheria toxin injection).

## Spleen & Tumor FACS analysis

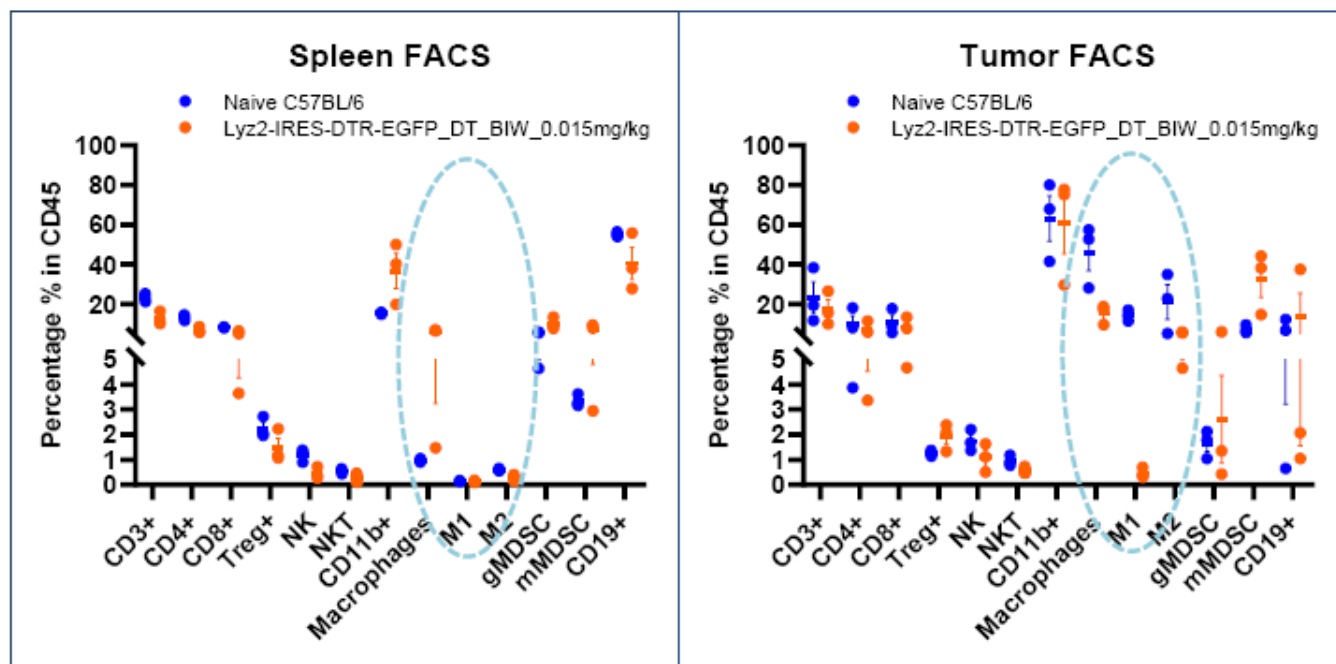


Fig3. Analysis of the level of different immune cells in the spleen and transplanted tumor by FACS (See Figure 4 for details of diphtheria toxin injection).

### MC38 Tumor Growth Curve

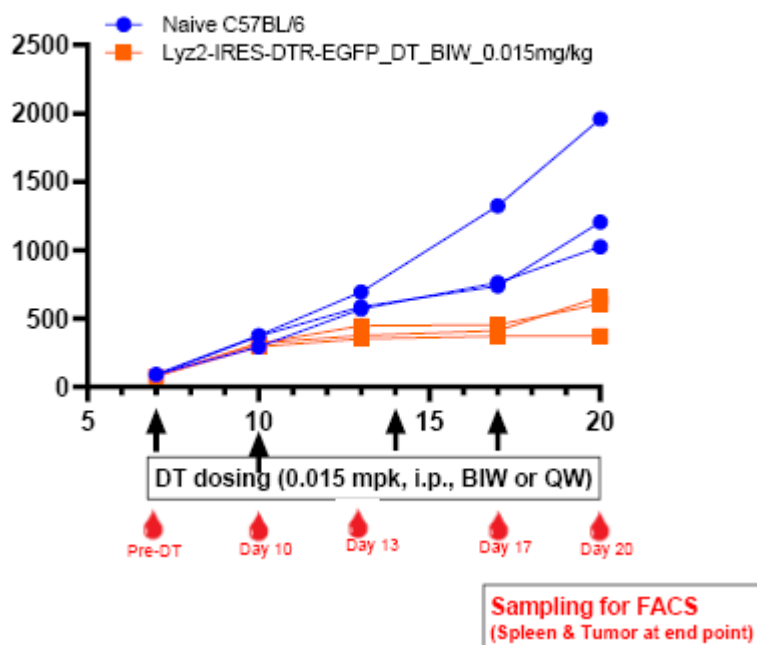


Fig4. The growth of MC38 tumors in Lyz2-DTRGFP mice and C57BL/6 mice.

Heterozygous Lyz2-DTRGFP mice and C57BL/6 mice were inoculated with MC38 colon cancer cells. The Lyz2-DTRGFP mice were injected with diphtheria toxin twice a week.

The data is provided by Crownbio.

