

Col1a2-2A-DreERT2

Nomenclature	C57BL/6Smoc- <i>Col1a2</i> ^{em1(2A-DreERT2-Wpre-pA)Smoc}
Cat. NO.	NM-KI-210109
Strain State	Sperm cryopreservation

Gene Summary

Gene Symbol Crbn	Synonyms	piL; AF229032; AW108261; 2610203G15Rik; 2900045O07Rik
	NCBI ID	58799
	MGI ID	1913277
	Ensembl ID	ENSMUSG000000005362
	Human Ortholog	CRBN

Model Description

2A-DreERT2-Wpre-pA expression cassette was knocked into the Col1a2 gene .

*Literature published using this strain should indicate: Col1a2-2A-DreERT2 mice (Cat. NO. NM-KI-210109) were purchased from Shanghai Model Organisms Center, Inc..

Validation Data

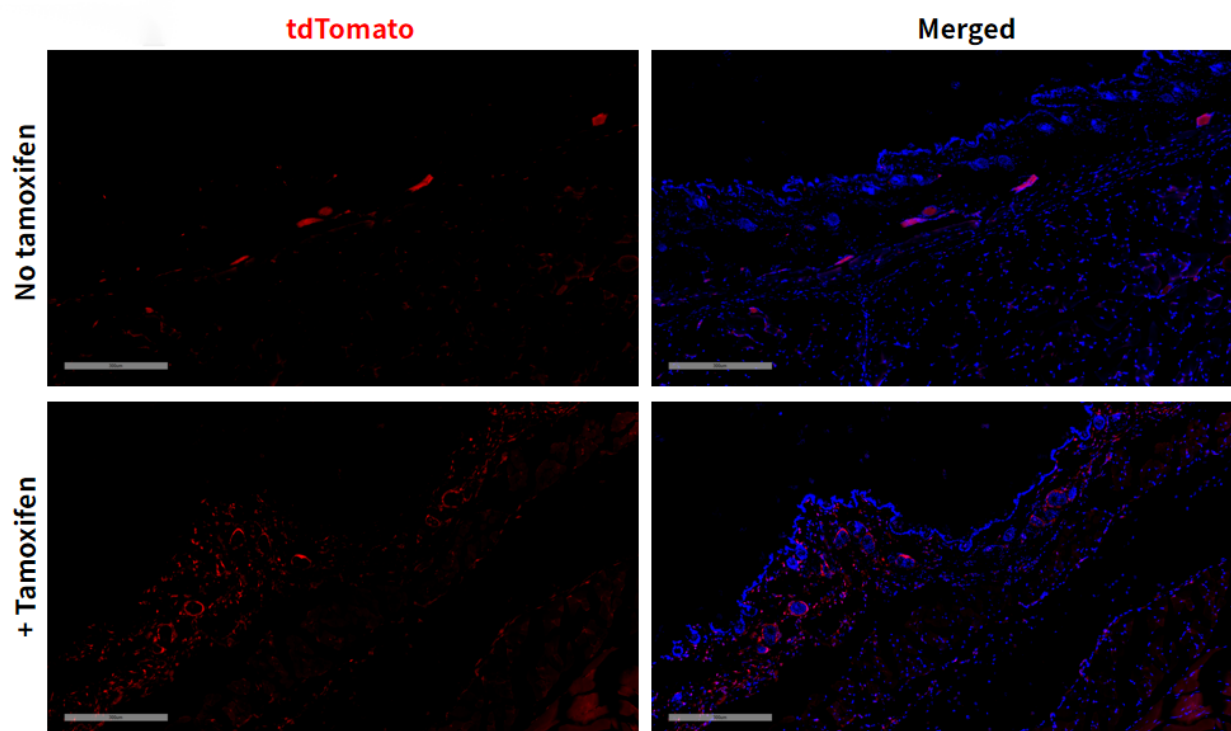


Fig 1. DreERT2-mediated recombination in skin of *Col1a2DreERT2/+; Rosa26tdTomato/+* mice.

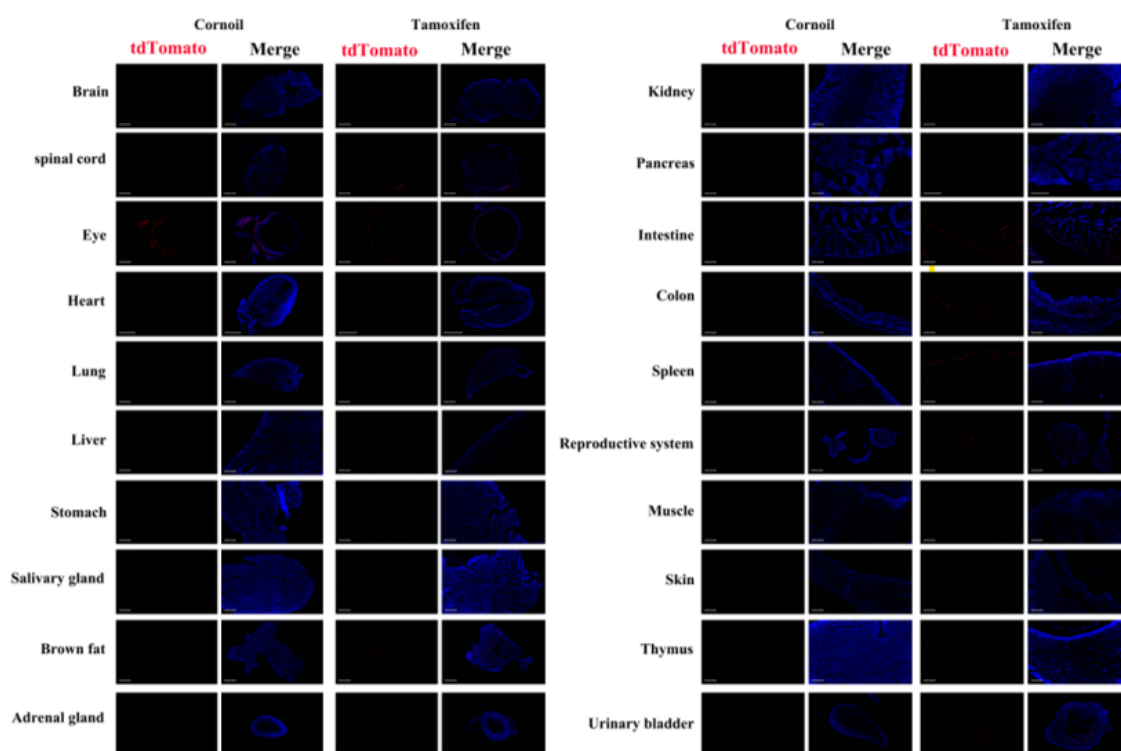


Fig 2. Detection of tdTomato (red) in various tissues of *Col1a2DreERT2/+; Rosa26tdTomato/+*. Expression tissues include: lung, small and large intestine, spleen, ovary, bladder, skin. A few cells expressed in spinal cord, liver, stomach, salivary glands, kidney, pancreas, thymus, muscle. Tissues that unexpressed include brain, retina, heart, brown fat, adrenal glands. (9-week old, female) (For more detailed information please contact our technical advisor.)

