

# MC38-hCEACAM5(2)

## Strain Information

Cat. NO.	NM-S13-TM34
Cell Line	MC38- <i>Igs2</i> <sup>em1(hCEACAM5)Smoc</sup>
Strain State	Validation of tumorigenic capacity completed
Model	A CEACAM5 expression cassette was knocked into the H11 locus.
Description	*Literature published using this strain should indicate: MC38-hCEACAM5(2) cell line (Cat. NO. NM-S13-TM34) was purchased from Shanghai Model Organisms Center, Inc..

## Validation Data

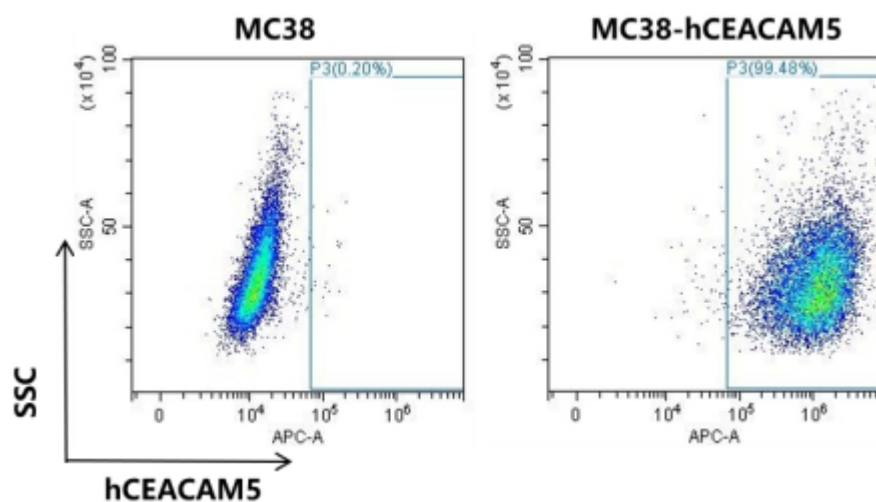


Figure 1. hCEACAM5 expression in MC38-hCEACAM5 cell line.

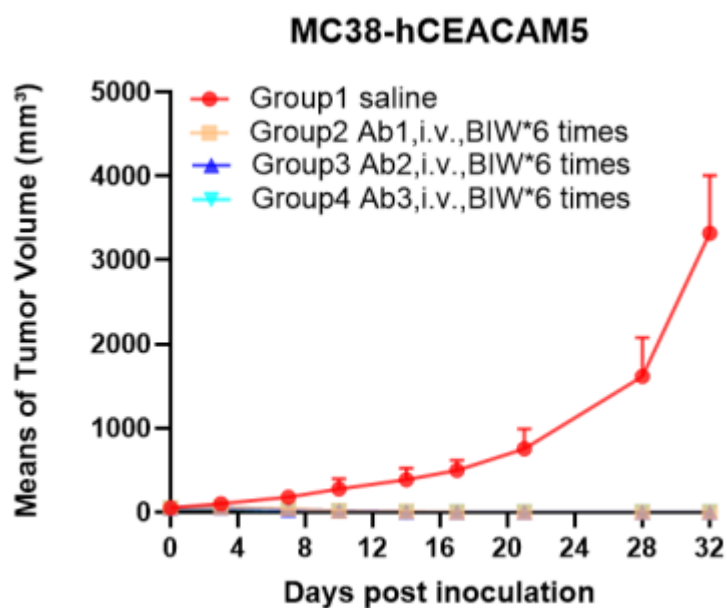


Figure 2. Tumor growth curve of MC38-hCEACAE allogeneic model (n=5).

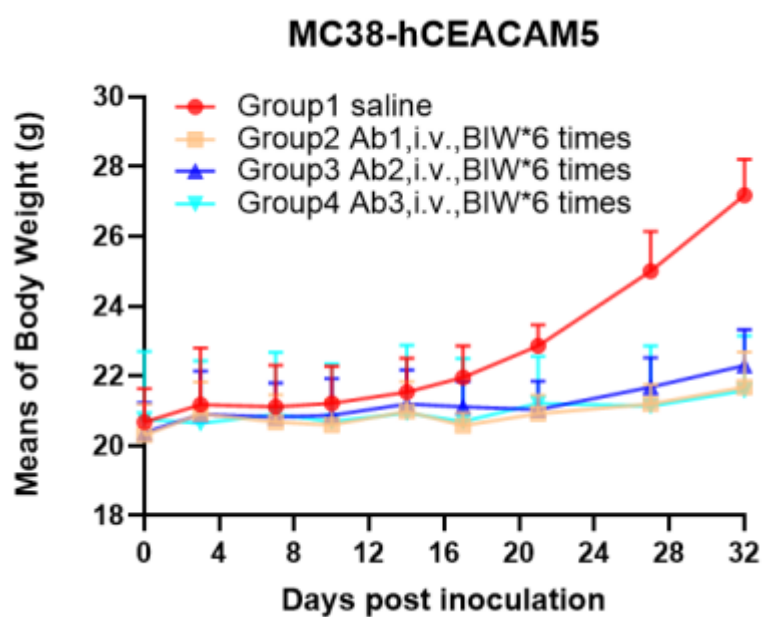


Figure 3. Body weight of MC38-hCEACAM5 allogeneic model (n=5).

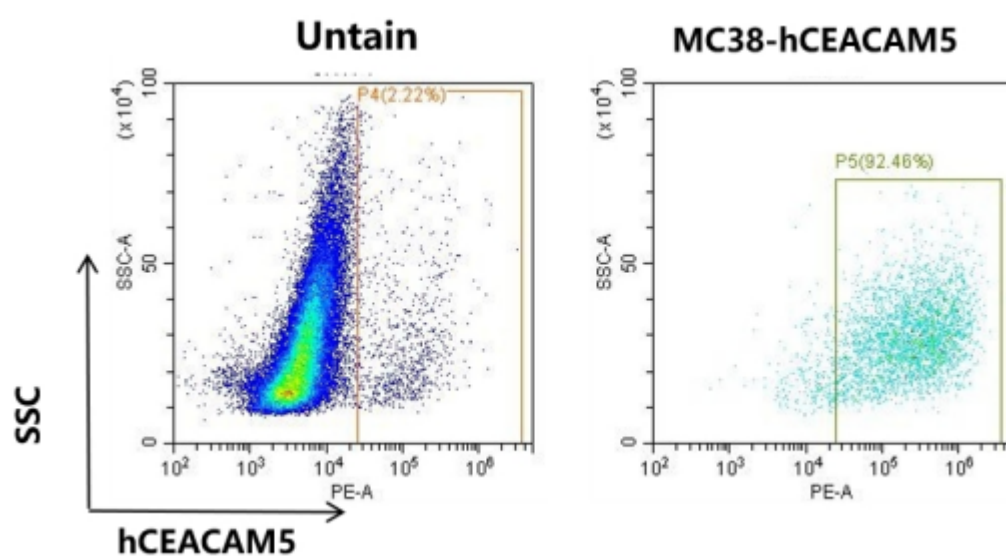


Figure 4. The expression of hCEACAM5 in humanized modified tumors by FACS.