

# Nps-2A-Cre

<b>Nomenclature</b>	C57BL/6Smoc- <i>Nps</i> <sup>em(2A-iCre)Smoc</sup>
<b>Cat. NO.</b>	NM-KI-215090
<b>Strain State</b>	Sperm cryopreservation

## Gene Summary

<b>Gene Symbol</b> <b>Nps</b>	<b>Synonyms</b>	-
	<b>NCBI ID</b>	<a href="#">100043254</a>
	<b>MGI ID</b>	<a href="#">3642232</a>
	<b>Ensembl ID</b>	<a href="#">ENSMUSG00000073804</a>
	<b>Human Ortholog</b>	NPS

## Model Description

2A-iCre expression cassette was knocked into the Nps gene .

\*Literature published using this strain should indicate: Nps-2A-Cre mice (Cat. NO. NM-KI-215090) were purchased from Shanghai Model Organisms Center, Inc..

## Validation Data

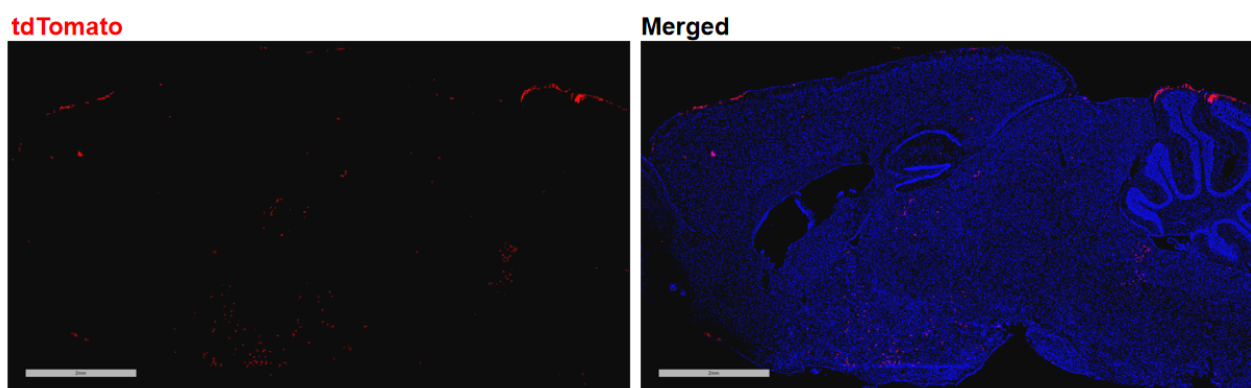


Fig1. Cre mediated recombination in brain of *Nps*<sup>cre/+</sup>; *Rosa26*<sup>tdTomato/+</sup> mouse.

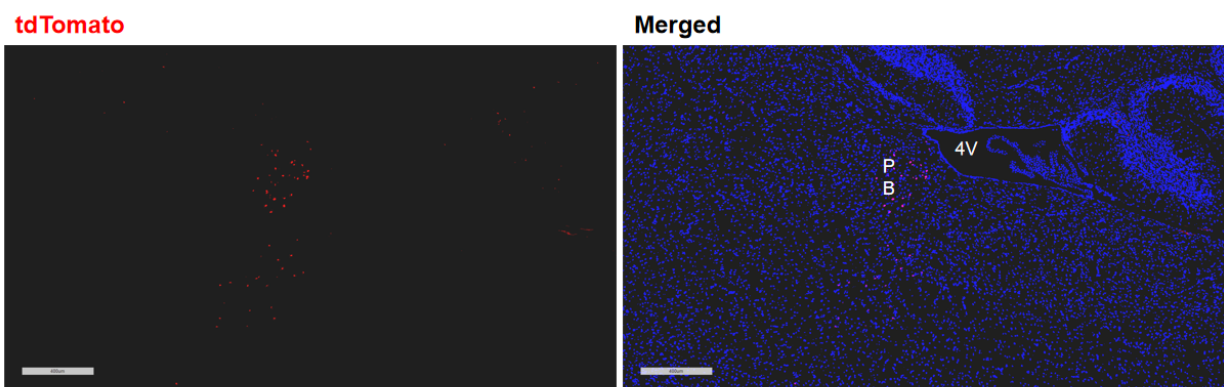


Fig2. Cre mediated recombination in PB region of *Npscre/+; Rosa26tdTomato/+* mouse.

PB:parabrachial nucleus;4V:Fourth ventricle

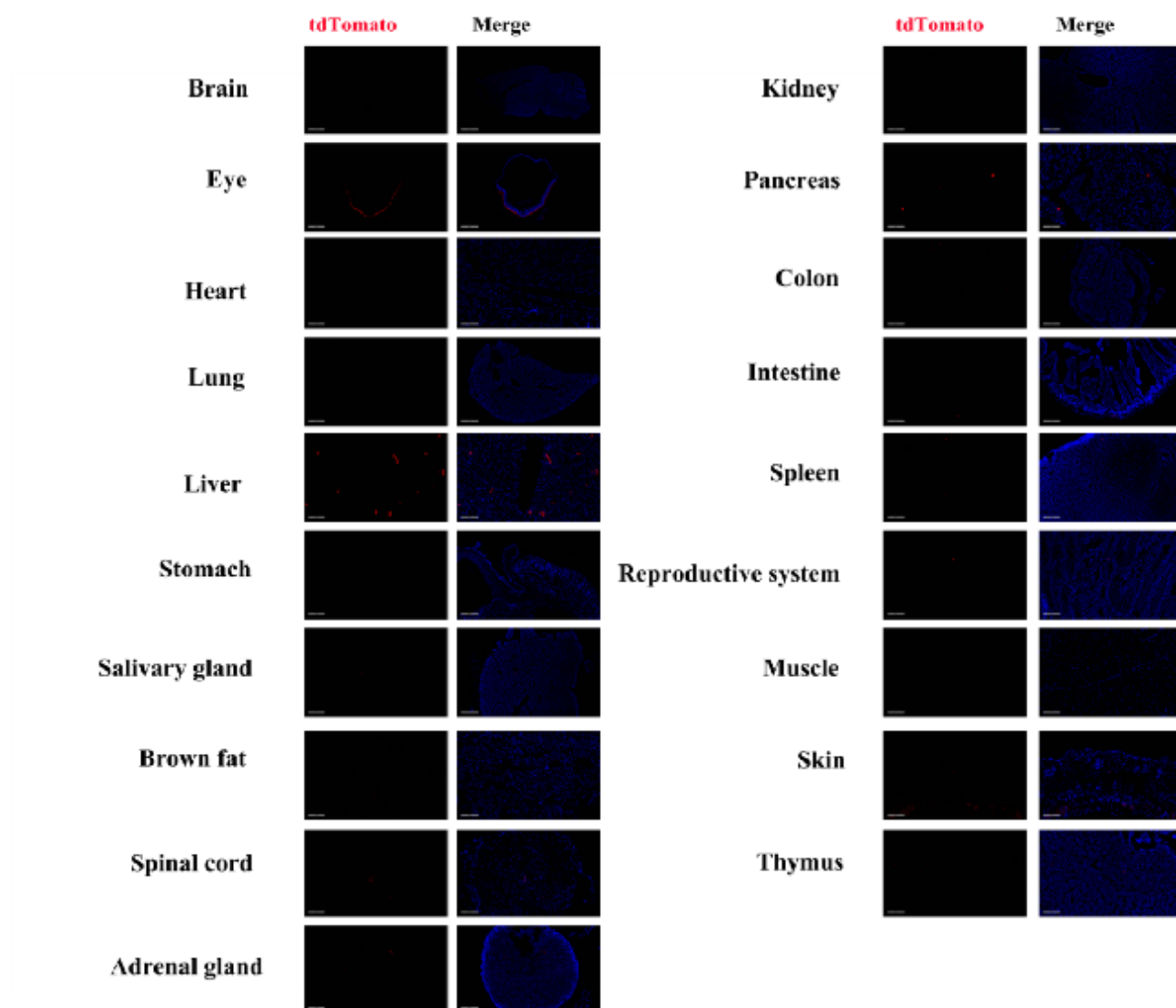


Fig3. Detection of tdTomato(red) in various tissues of *Npscre/+; Rosa26tdTomato/+* mouse. Expression tissues include: brain. A few cells expressed in liver, brown fat, stomach, salivary gland, spinal cord, adrenal gland, kidney, pancreas, colon and

small intestine, spleen, testis, skin, thymus. Tissues that unexpressed include retina, heart, lung, muscle. (8.5-week old, male) (For more detailed information please contact our technical advisor.)

---