

# Tmem119-IRES-Cre

<b>Nomenclature</b>	C57BL/6Smoc- <i>Tmem119em1(IRES-Cre)</i> Smoc
<b>Cat. NO.</b>	NM-KI-225007
<b>Strain State</b>	Repository Live

## Gene Summary

<b>Gene Symbol</b> <b>Tmem119</b>	<b>Synonyms</b>	obif; AW208946; BC025600
	<b>NCBI ID</b>	<a href="#">231633</a>
	<b>MGI ID</b>	<a href="#">2385228</a>
	<b>Ensembl ID</b>	<a href="#">ENSMUSG00000054675</a>
	<b>Human Ortholog</b>	TMEM119

## Model Description

IRES-Cre expression cassette was knocked into the Tmem119 gene stop codon site.

\*Literature published using this strain should indicate: Tmem119-IRES-Cre mice (Cat. NO. NM-KI-225007) were purchased from Shanghai Model Organisms Center, Inc..

## Validation Data

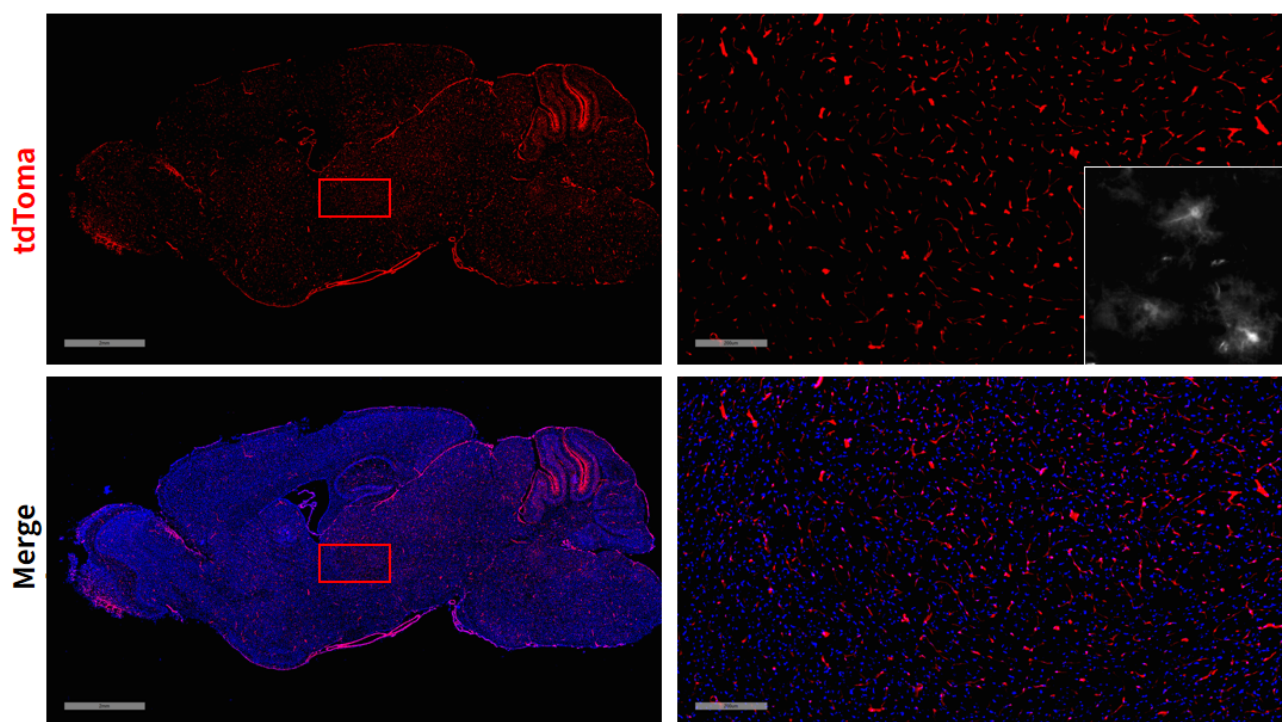


Fig1. Cre mediated recombination in brain of *Tmem119*<sup>Cre/+</sup>;*Rosa26*<sup>tdTomato/+</sup> mouse.

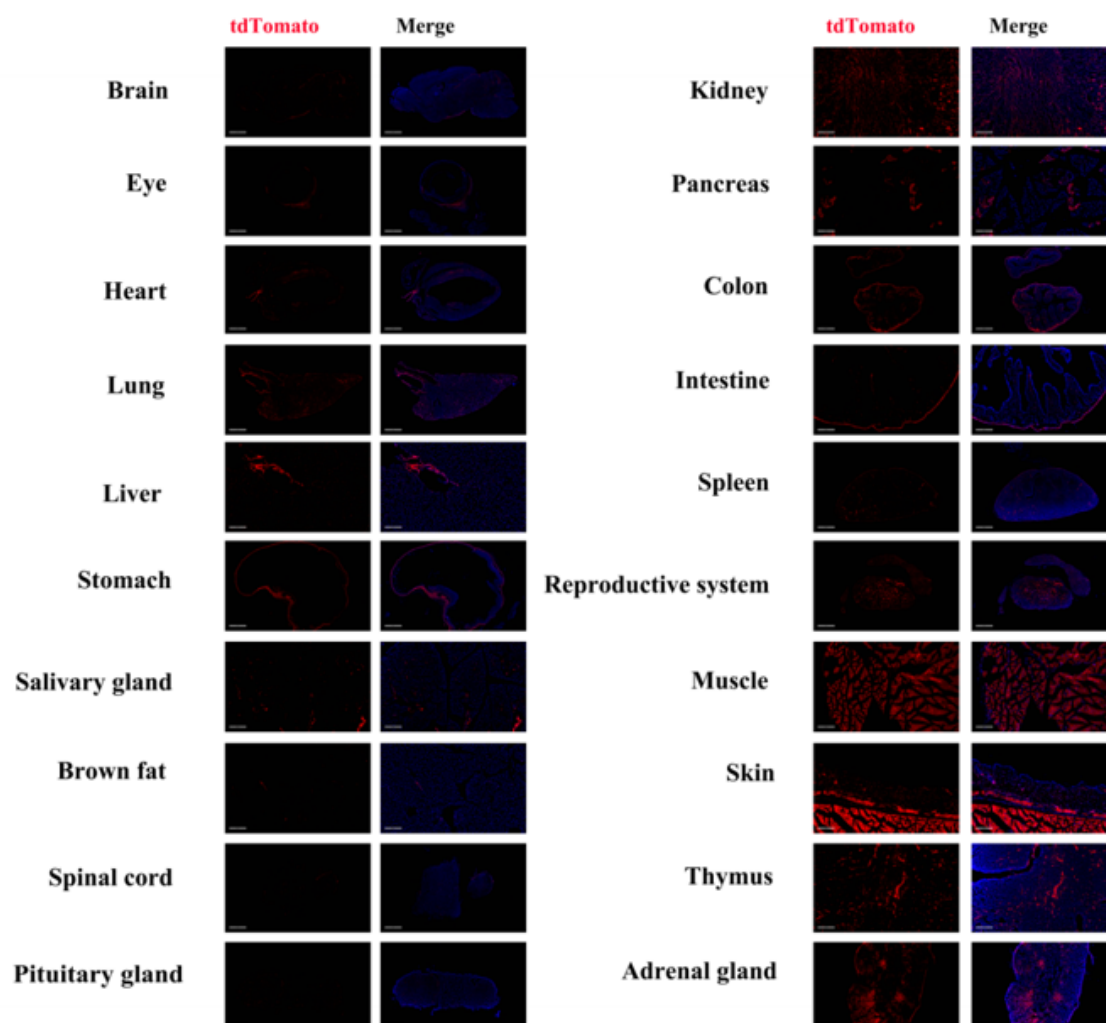


Fig2. Detection of tdTomato(red) in various tissues of ED-L2Cre/+;Rosa26tdTomato/+ mouse. Expression tissues include: brain, heart, lung, liver, stomach, salivary gland, spinal cord, pituitary gland, kidney, pancreas, colon, small intestine, spleen, testis, epididymis, muscle, thymus, adrenal gland. A few cells expressed in eyeball, brown fat, epidermis. (8-weeks old, male) (For more detailed information please contact our technical advisor.)

---