

# hCB1(2)

<b>Nomenclature</b>	C57BL/6Smoc- <i>Cnr1</i> <sup>em1(hCNR1)Smoc</sup>
<b>Cat. NO.</b>	NM-HU-225070
<b>Strain State</b>	Embryo cryopreservation

## Gene Summary

<b>Gene Symbol</b> Cnr1	<b>Synonyms</b>	CB1; CB-R; CB1R
	<b>NCBI ID</b>	<a href="#">12801</a>
	<b>MGI ID</b>	<a href="#">104615</a>
	<b>Ensembl ID</b>	<a href="#">ENSMUSG00000044288</a>
	<b>Human Ortholog</b>	CNR1

## Model Description

The endogenous mouse *Cnr1* gene was replaced by human CNR1 gene.

\*Literature published using this strain should indicate: hCB1(2) mice (Cat. NO. NM-HU-225070) were purchased from Shanghai Model Organisms Center, Inc..

## Validation Data

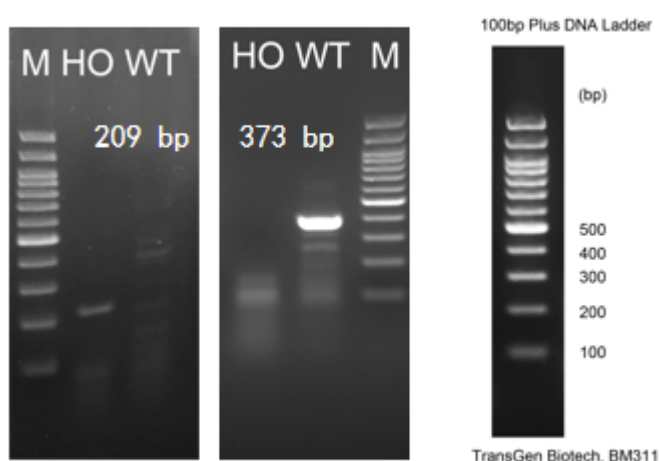


Fig1. Detection of CB1 expression in cerebellum by RT-PCR.

Wild type: only one band at 373 bp with primers F1/R1(mCb1);

Homozygous: only one band at 209 bp with primers F2/R2(hCB1).

Abbr. M, DNA marker; HO, homozygous; WT, wild type.

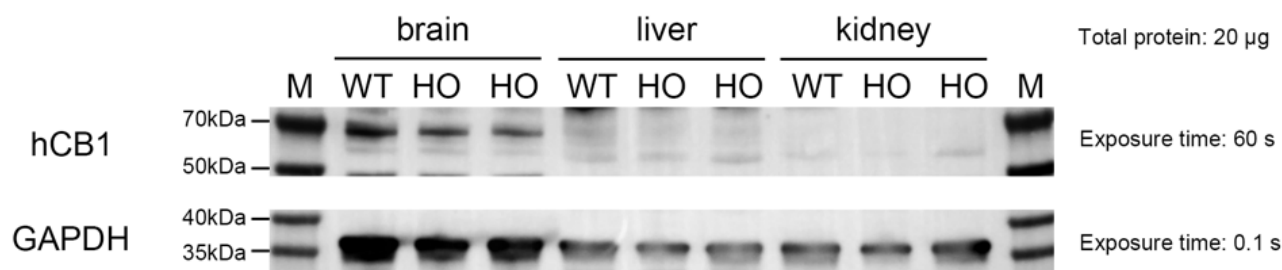


Fig2. Detection of human CB1 expression in Brains, liver and kidney in hCB1 knockin mice by WB.

Abbr. HO, homozygous; WT, wild type.

Note. The anti-human CB1 Antibody cross-reacted with mouse CB1 and humanized CB1.

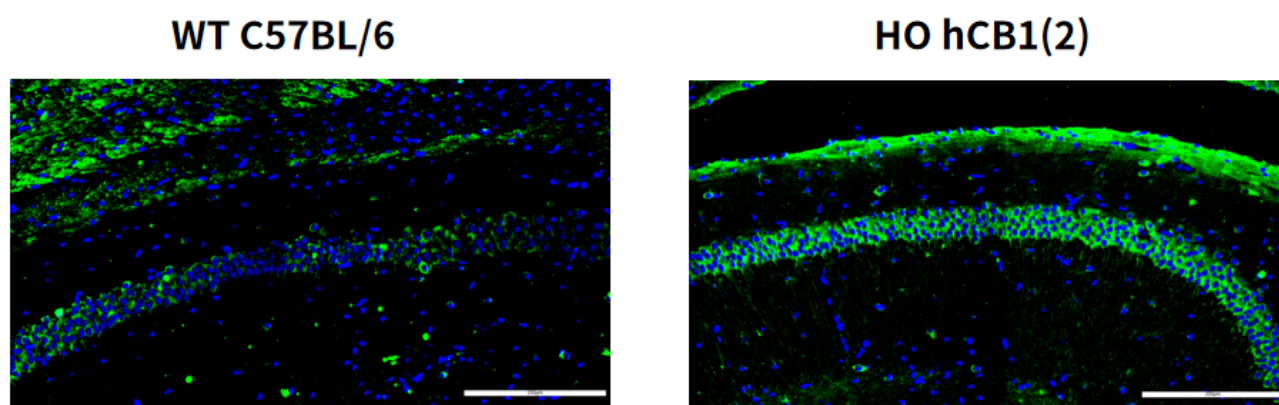


Fig3. Detection of human CB1 expression in CA1 in hCB1(2) knockin mice by IF.

Brains were collected from wild-type mice and HO hCB1(2) mice, and analyzed by IF with anti-human CB1 antibody.

Abbr. HO, homozygous; WT, wild type.

Note. The anti-human CB1 Antibody cross-reacted with mouse CB1 and humanized CB1.

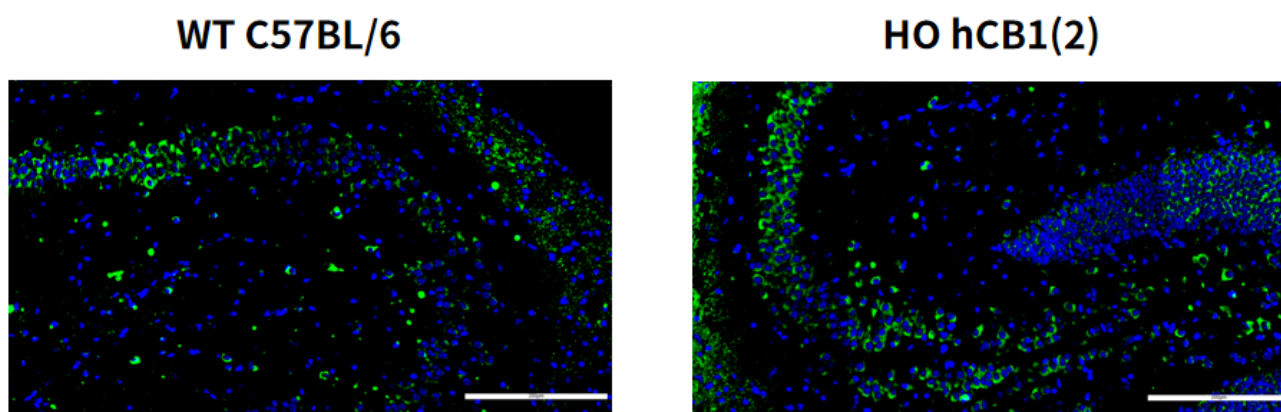


Fig4. Detection of human CB1 expression in CA3 in hCB1(2) knockin mice by IF.

Brains were collected from wild-type mice and HO hCB1(2) mice, and analyzed by IF with anti-human CB1 antibody.

Abbr. HO, homozygous; WT, wild type.

Note. The anti-human CB1 Antibody cross-reacted with mouse CB1 and humanized CB1.

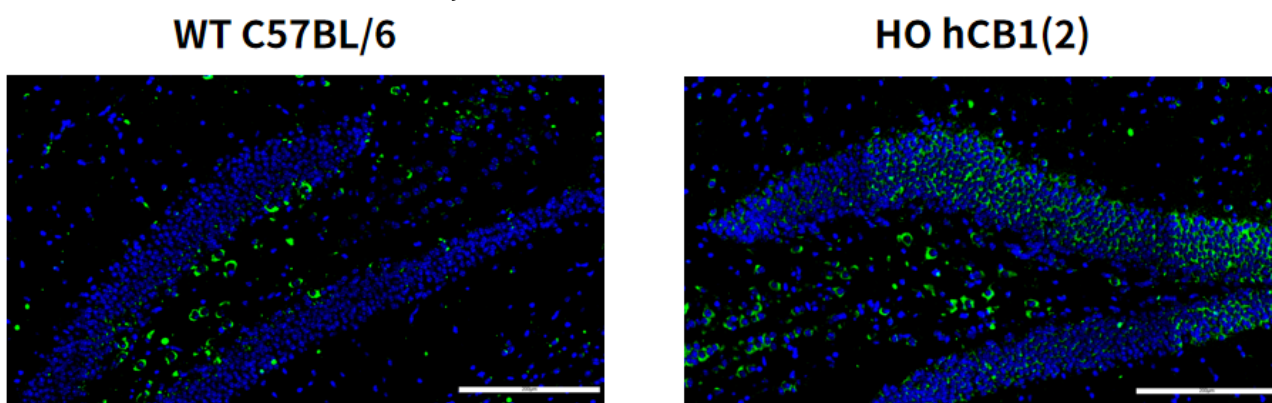


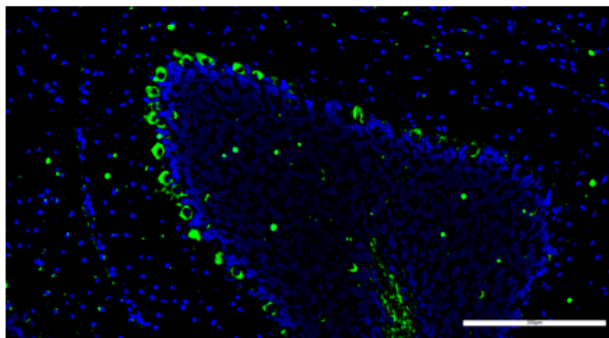
Fig5. Detection of human CB1 expression in Dentate Gyrus(DG) in hCB1(2) knockin mice by IF.

Brains were collected from wild-type mice and HO hCB1(2) mice, and analyzed by IF with anti-human CB1 antibody.

Abbr. HO, homozygous; WT, wild type.

Note. The anti-human CB1 Antibody cross-reacted with mouse CB1 and humanized CB1.

**WT C57BL/6**



**HO hCB1(2)**

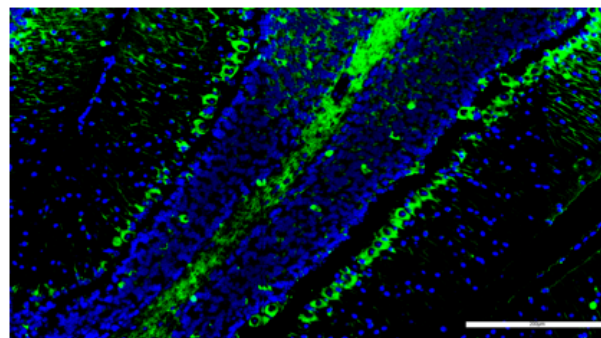


Fig6. Detection of human CB1 expression in Cerebellum in hCB1(2) knockin mice by IF.

Brains were collected from wild-type mice and HO hCB1(2) mice, and analyzed by IF with anti-human CB1 antibody.

Abbr. HO, homozygous; WT, wild type.

Note. The anti-human CB1 Antibody cross-reacted with mouse CB1 and humanized CB1.