

# Klrd1-2A-Cre

<b>Nomenclature</b>	C57BL/6Smoc- <i>Klrd1</i> <sup>em(2A-Cre-WPRE-PolyA)Smoc</sup>
<b>Cat. NO.</b>	NM-KI-220039
<b>Strain State</b>	Sperm cryopreservation

## Gene Summary

<b>Gene Symbol</b> Klrd1	<b>Synonyms</b>	CD94
	<b>NCBI ID</b>	<a href="#">16643</a>
	<b>MGI ID</b>	<a href="#">1196275</a>
	<b>Ensembl ID</b>	<a href="#">ENSMUSG00000030165</a>
	<b>Human Ortholog</b>	KLRD1

## Model Description

2A-Cre-WPRE-PolyA expression cassette was knocked into the Klrd1 gene start codon site.

\*Literature published using this strain should indicate: Klrd1-2A-Cre mice (Cat. NO. NM-KI-220039) were purchased from Shanghai Model Organisms Center, Inc..

## Validation Data

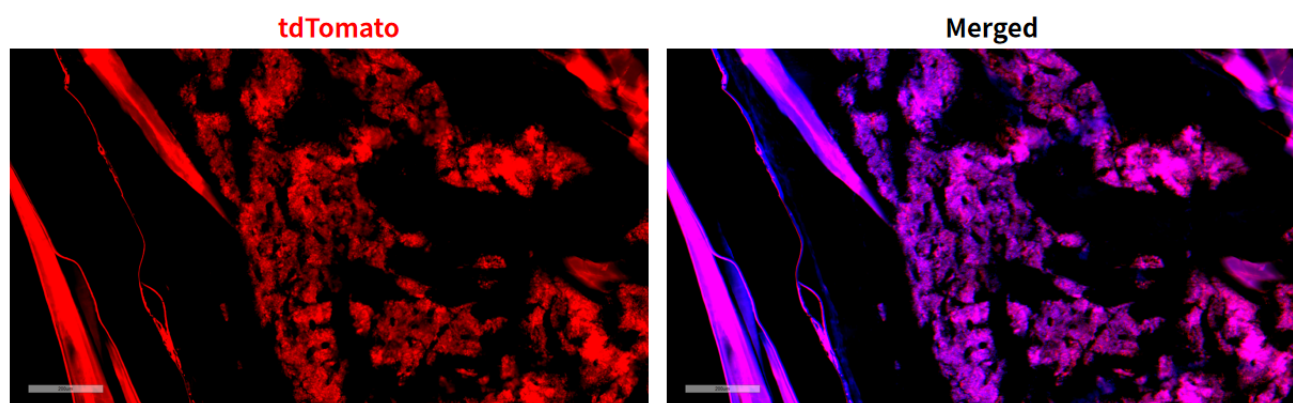


Fig 1. Cre-mediated recombination in bone marrow of Klrd1<sup>Cre/+</sup>; Rosa26<sup>tdTomato/+</sup> mice.

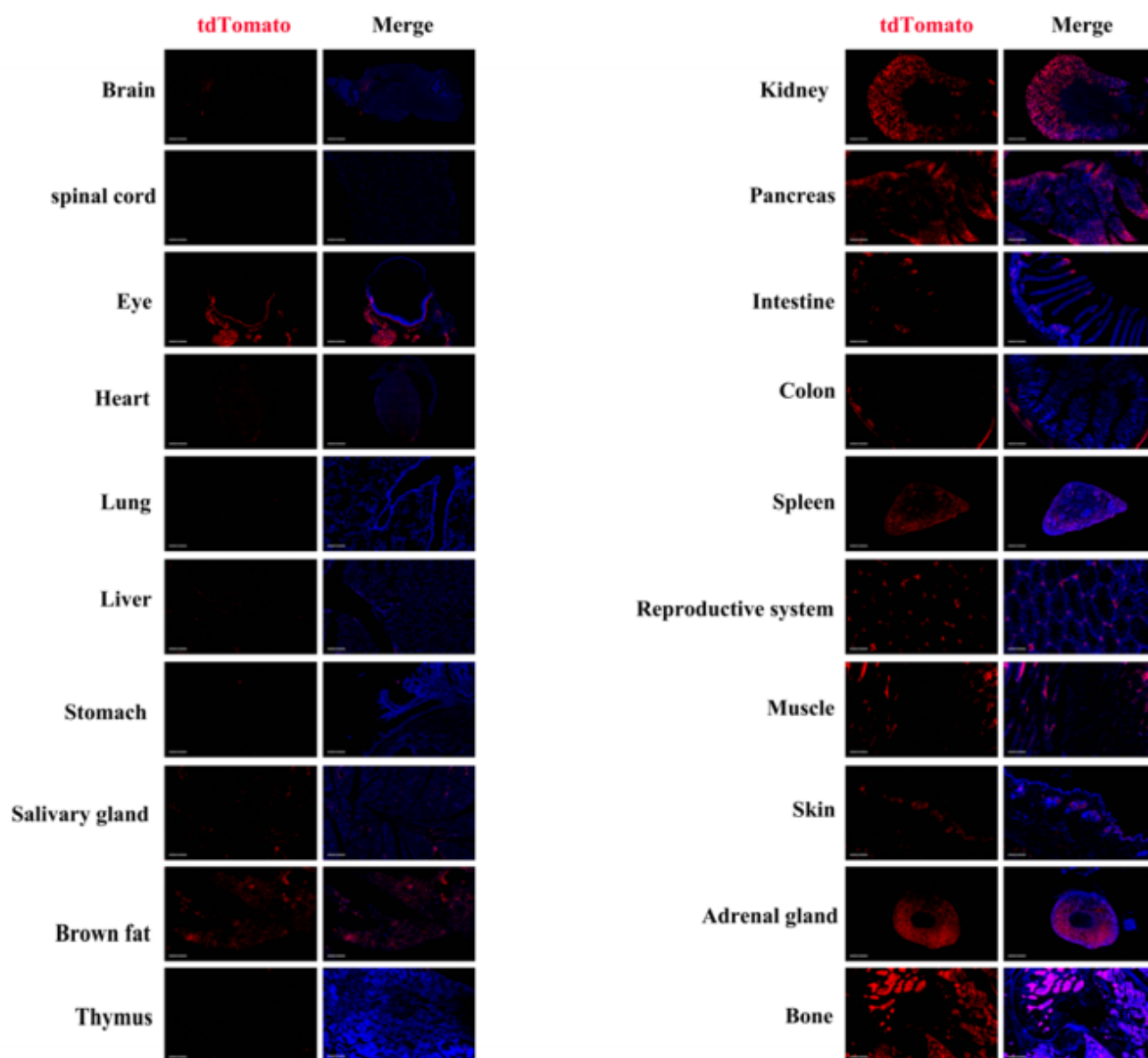


Fig 2. Detection of tdTomato (red) in various tissues of *Klr1cre/+; Rosa26tdTomato/+* mice. Expression tissues include: brain, bone marrow, liver, salivary gland, brown fat, kidney, pancreas, small intestine, colon, spleen, testis, skeletal muscle, skin, adrenal gland. A few cells expressed in eyeball, heart, lung, stomach, thymus. Tissues that unexpressed include spinal cord. (21-week old, male) (For more detailed information please contact our technical advisor.)