

SK-MES-1

Strain Information

| | |
|-------------------|---|
| Cat. NO. | NM-F02 |
| Cell Line | SK-MES-1 |
| Strain State | Validation of tumorigenic capacity completed |
| Model Description | SK-MES-1 cell line was established in 1970 from a metastatic site (pleural effusion) in a 65-year-old Caucasian male with squamous cell carcinoma of the lung. *Literature published using this strain should indicate: SK-MES-1 cell line (Cat. NO. NM-F02) was purchased from Shanghai Model Organisms Center, Inc.. |

Validation Data

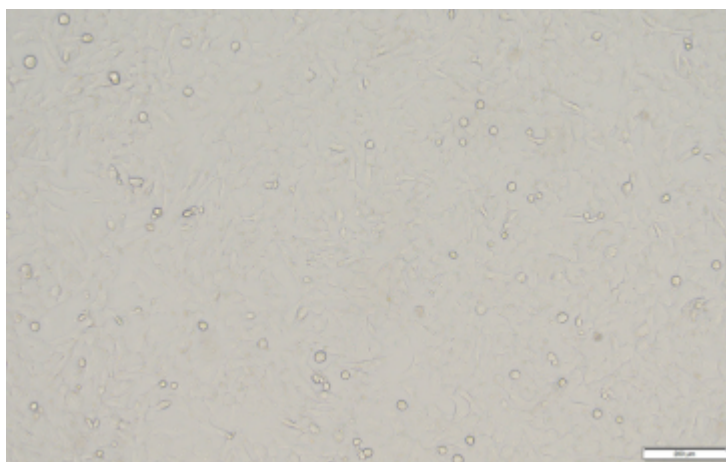
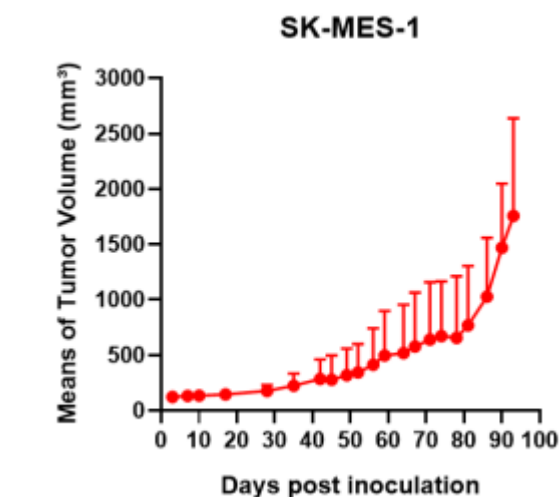
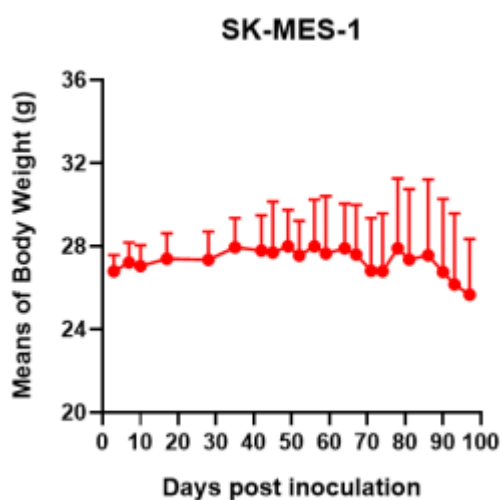


Fig1. Morphology of SK-MES-1 cell line.



A



B

Fig2. Analysis of Tumorigenesis in M-NSG mice (n=2) . A Tumor volume was measured by time. B Body weight was simultaneously checked.

*Wild-type cell lines are not for sale, and only applied to construction of tumor bearing mice and in-vivo efficacy studies.