

# Ca Ski

## Strain Information

Cat. NO.	NM-Z03
Cell Line	Ca Ski
Strain State	Validation of tumorigenic capacity completed
Model Description	Ca Ski cell line is derived from an epidermoid carcinoma of the cervix metastatic to the small bowel mesentery of a 40-year-old Caucasian.  *Literature published using this strain should indicate: Ca Ski cell line (Cat. NO. NM-Z03) was purchased from Shanghai Model Organisms Center, Inc..

## Validation Data

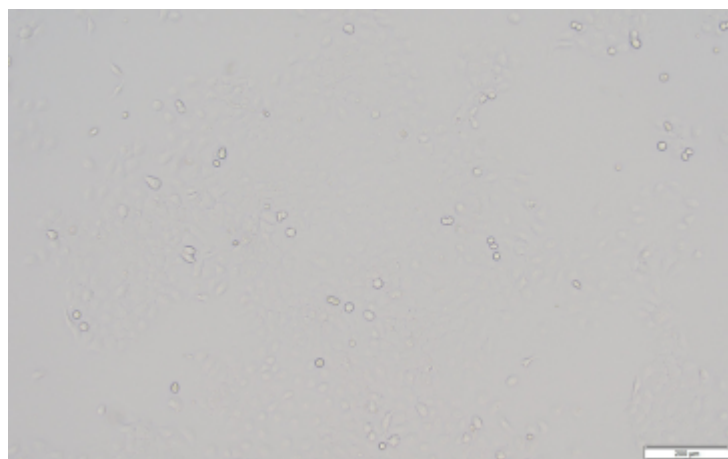
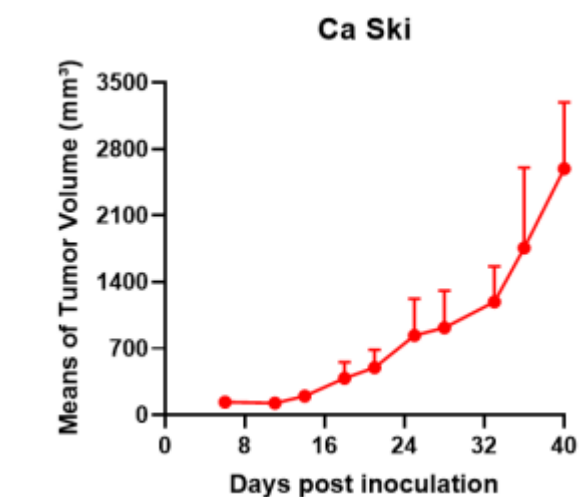
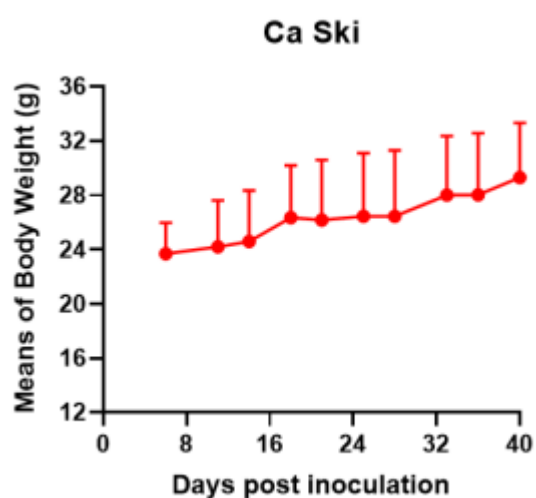


Fig1. Morphology of Ca Ski cell line.



A



B

Fig2. Analysis of Tumorigenesis in M-NSG mice (n=4) . a Tumor volume was measured by time. b Body weight was simultaneously checked.

**\*Wild-type cell lines are not for sale, and only applied to construction of tumor bearing mice and in-vivo efficacy studies.**