

SHP-77

Strain Information

Cat. NO.	NM-FX03
Cell Line	SHP-77
Strain State	Validation of tumorigenic capacity completed
Model Description	<p>SHP-77 epithelial cells are derived from a non-encapsulated primary lung tumor from the apical portion of the upper lobe of the left lung of a 54-year-old, White male in 1977.</p> <p>*Literature published using this strain should indicate: SHP-77 cell line (Cat. NO. NM-FX03) was purchased from Shanghai Model Organisms Center, Inc..</p>

Validation Data

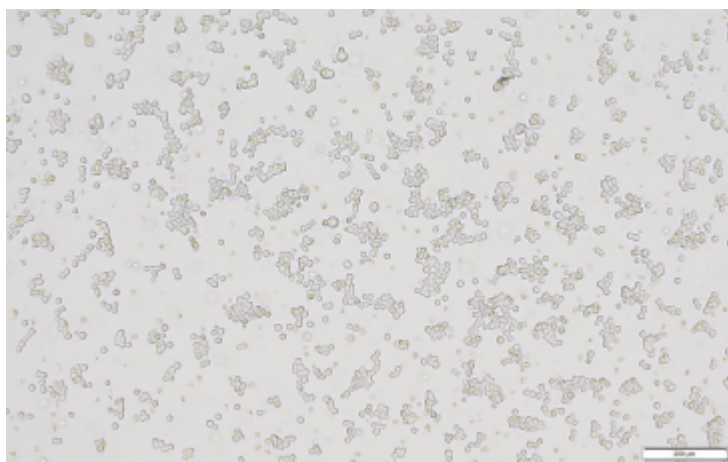
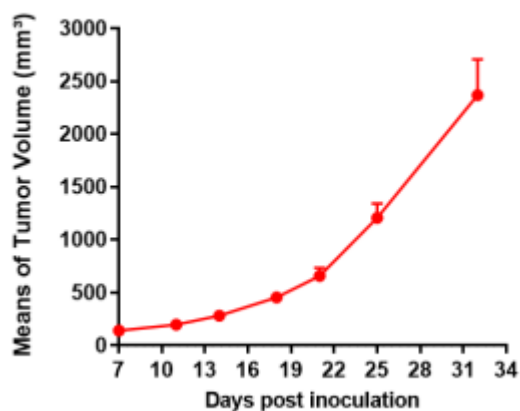


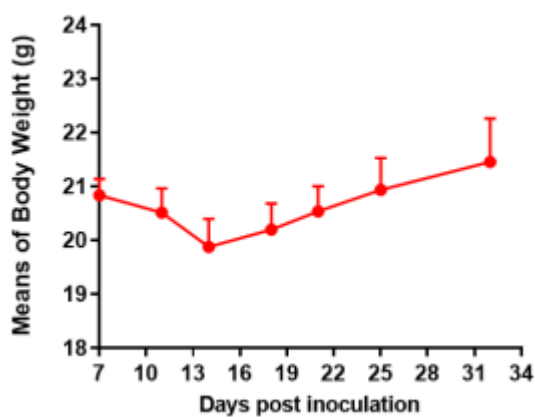
Fig1. Morphology of SHP-77 cell line.

SHP-77



A

SHP-77



B

Fig2. Analysis of Tumorigenesis in M-NSG mice (n=5) . A Tumor volume was measured by time. B Body weight was simultaneously checked.

*Wild-type cell lines are not for sale, and only applied to construction of tumor bearing mice and in-vivo efficacy studies.