

# Sox10-2A-Cre

|                     |   |
|---------------------|---|
| <b>Nomenclature</b> | C57BL/6Smoc- <i>Sox10</i> <sup>em(2A-Cre)Smoc</sup> |
| <b>Cat. NO.</b>     | NM-KI-220066  |
| <b>Strain State</b> | Repository Live                                     |

## Gene Summary

|                                    |                       |                                     |
|------------------------------------|-----------------------|-------------------------------------|
| <b>Gene Symbol</b><br><b>Sox10</b> | <b>Synonyms</b>       | gt; Dom; Sox21                      |
|                                    | <b>NCBI ID</b>        | <a href="#">20665</a>               |
|                                    | <b>MGI ID</b>         | <a href="#">98358</a>               |
|                                    | <b>Ensembl ID</b>     | <a href="#">ENSMUSG000000033006</a> |
|                                    | <b>Human Ortholog</b> | SOX10                               |

## Model Description

2A-Cre expression cassette was knocked into the Sox10 gene stop codon site.

\*Literature published using this strain should indicate: Sox10-2A-Cre mice (Cat. NO. NM-KI-220066) were purchased from Shanghai Model Organisms Center, Inc..

## Validation Data

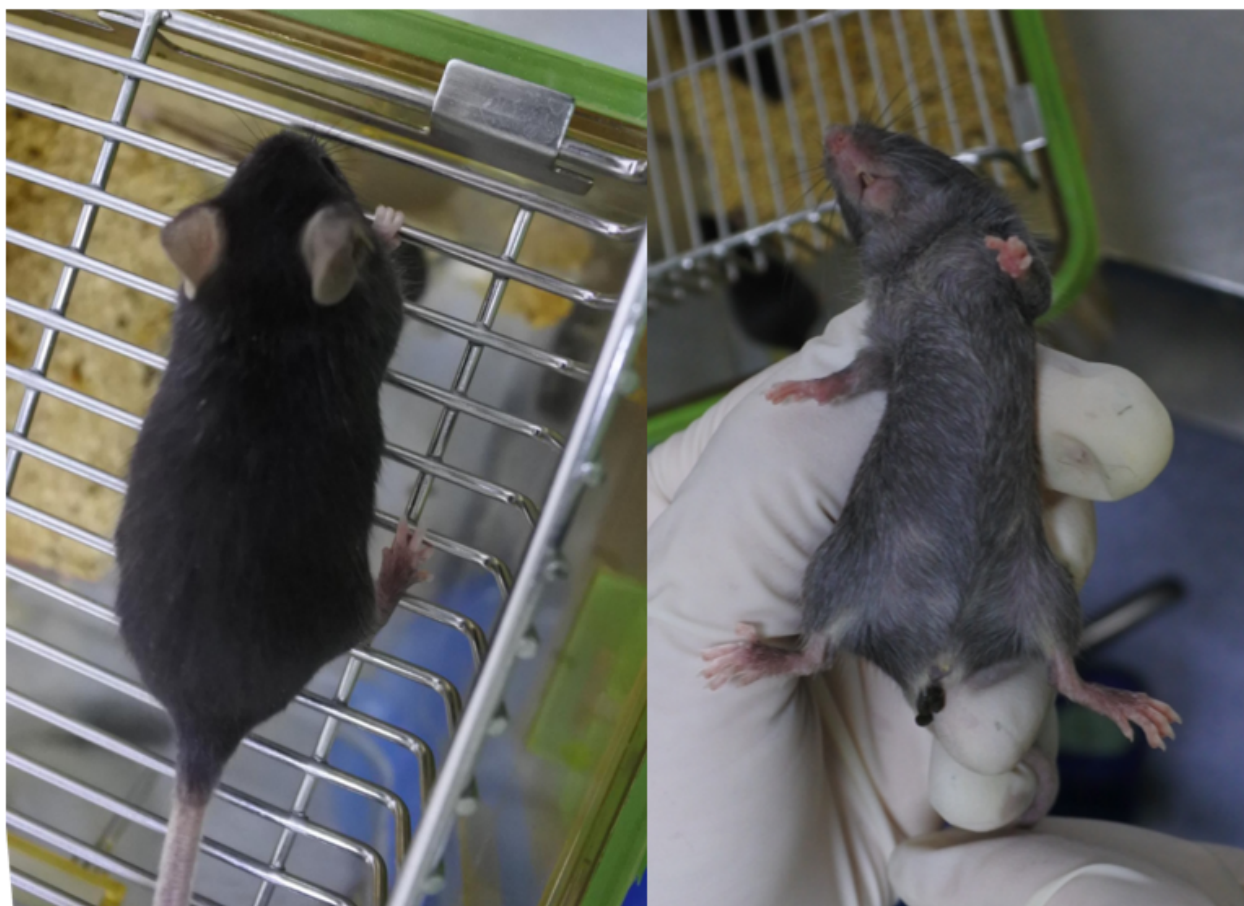
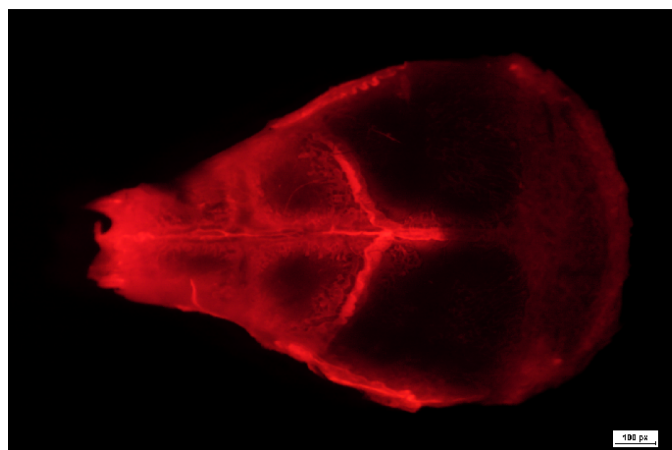


Fig 1. Photographs of the back and abdomen of Sox10Cre/+; Rosa26tdTomato/+ mice.

**tdTomato**



**Bright field**



Fig 2. Cre-mediated recombination in occipital skull of Sox10Cre/+; Rosa26tdTomato/+ mice.

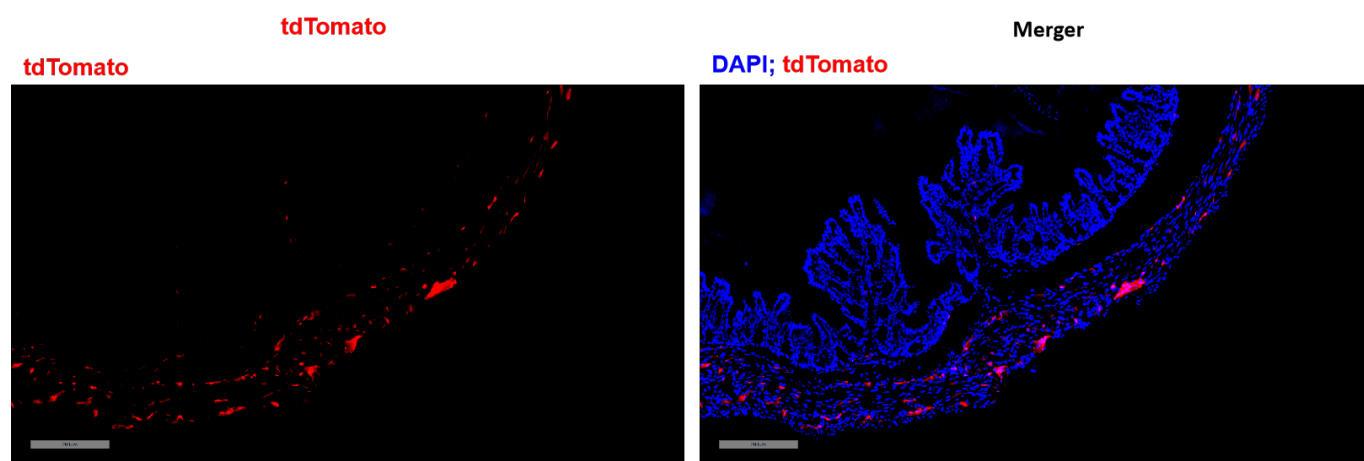


Fig 3. Cre-mediated recombination in intestines of Sox10Cre/+; Rosa26tdTomato/+ mice.

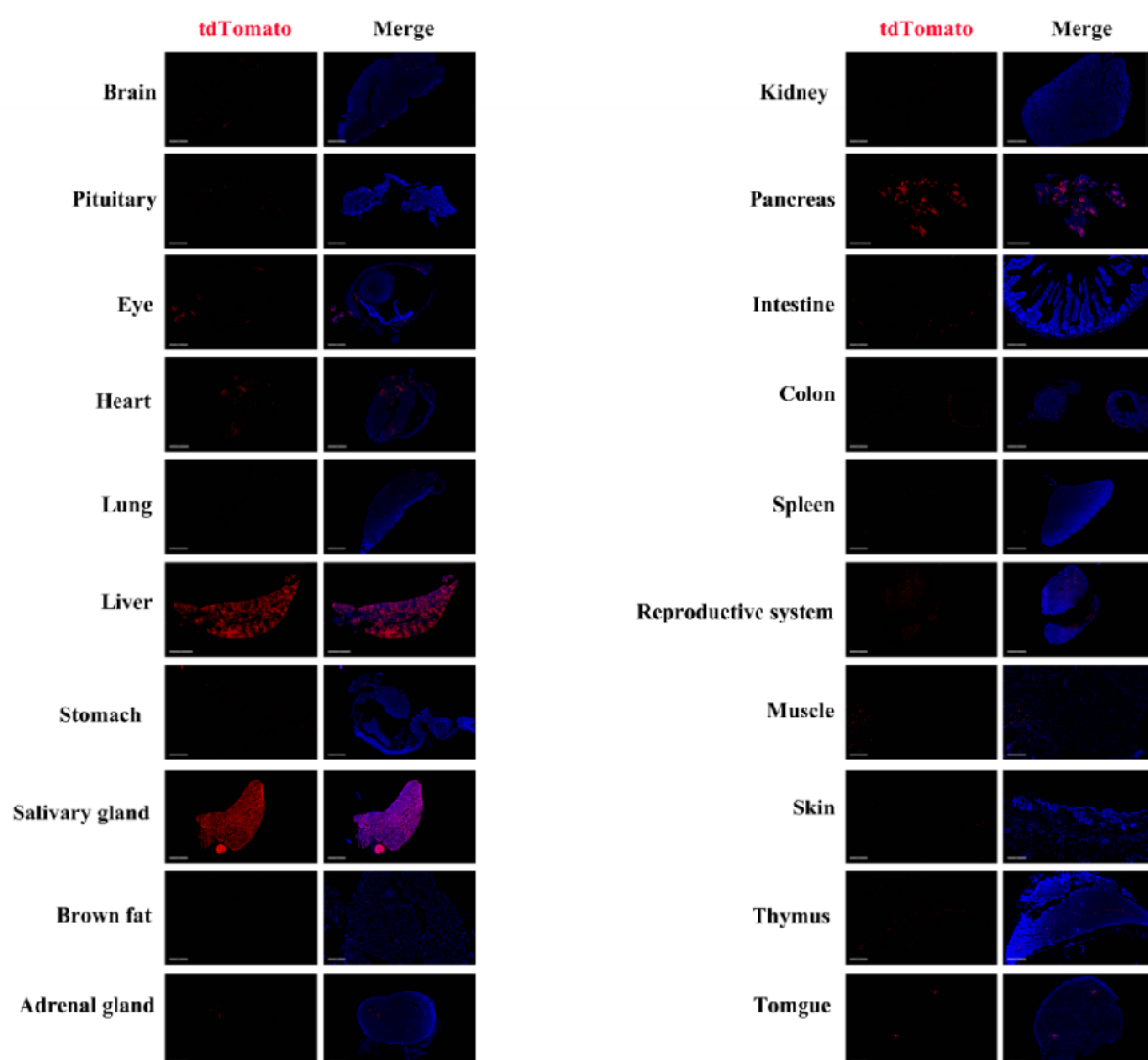


Fig 4. Detection of tdTomato(red) in various tissues of Sox10Cre/+; mice.

Rosa26tdTomato/+ mice. Expression tissues include: brain, pituitary gland, eyeball, heart, lung, liver, stomach, salivary gland, kidney, pancreas, small intestine, colon, testis, epididymis, thymus and tongue. A few cells expressed in brown fat, adrenal gland, spleen, muscle, skin. (8-week old, male) (For more detailed information please contact our technical advisor.)

---