

Cd2-IRES-Cre

Nomenclature	C57BL/6Smoc- <i>Cd2</i> ^{em(IRES-Cre)1Smoc}
Cat. NO.	NM-KI-225032
Strain State	Sperm cryopreservation

Gene Summary

Gene Symbol Cd2	Synonyms	Ly37; LFA-2; Ly-37
	NCBI ID	12481
	MGI ID	88320
	Ensembl ID	ENSMUSG00000027863
	Human Ortholog	CD2

Model Description

IRES-Cre expression cassette was knocked into the Cd2 gene .

Research Application: Cre mouse,B cell

*Literature published using this strain should indicate: Cd2-IRES-Cre mice (Cat. NO. NM-KI-225032) were purchased from Shanghai Model Organisms Center, Inc..

Validation Data

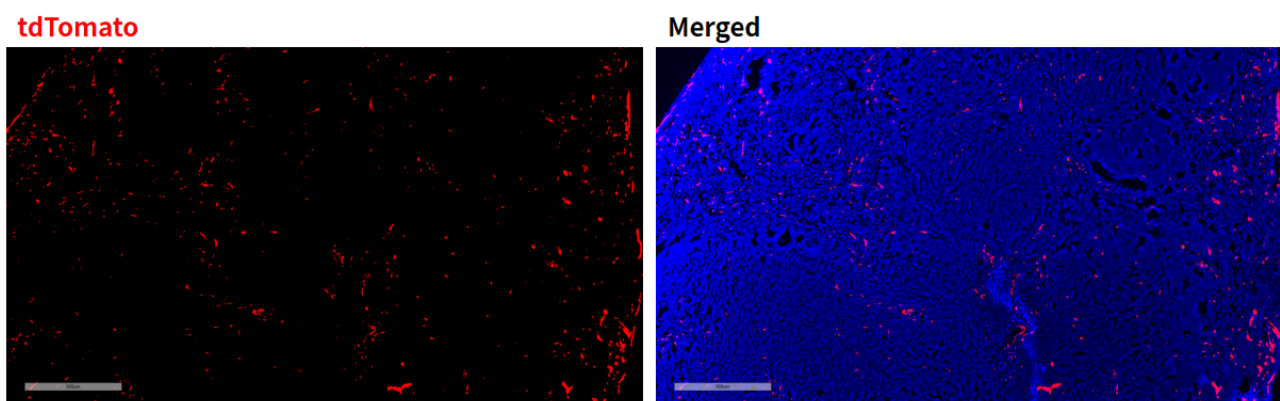


Fig1. Cre mediated recombination in spleen of Cd2Cre/+;Rosa26tdTomato/+ mouse.

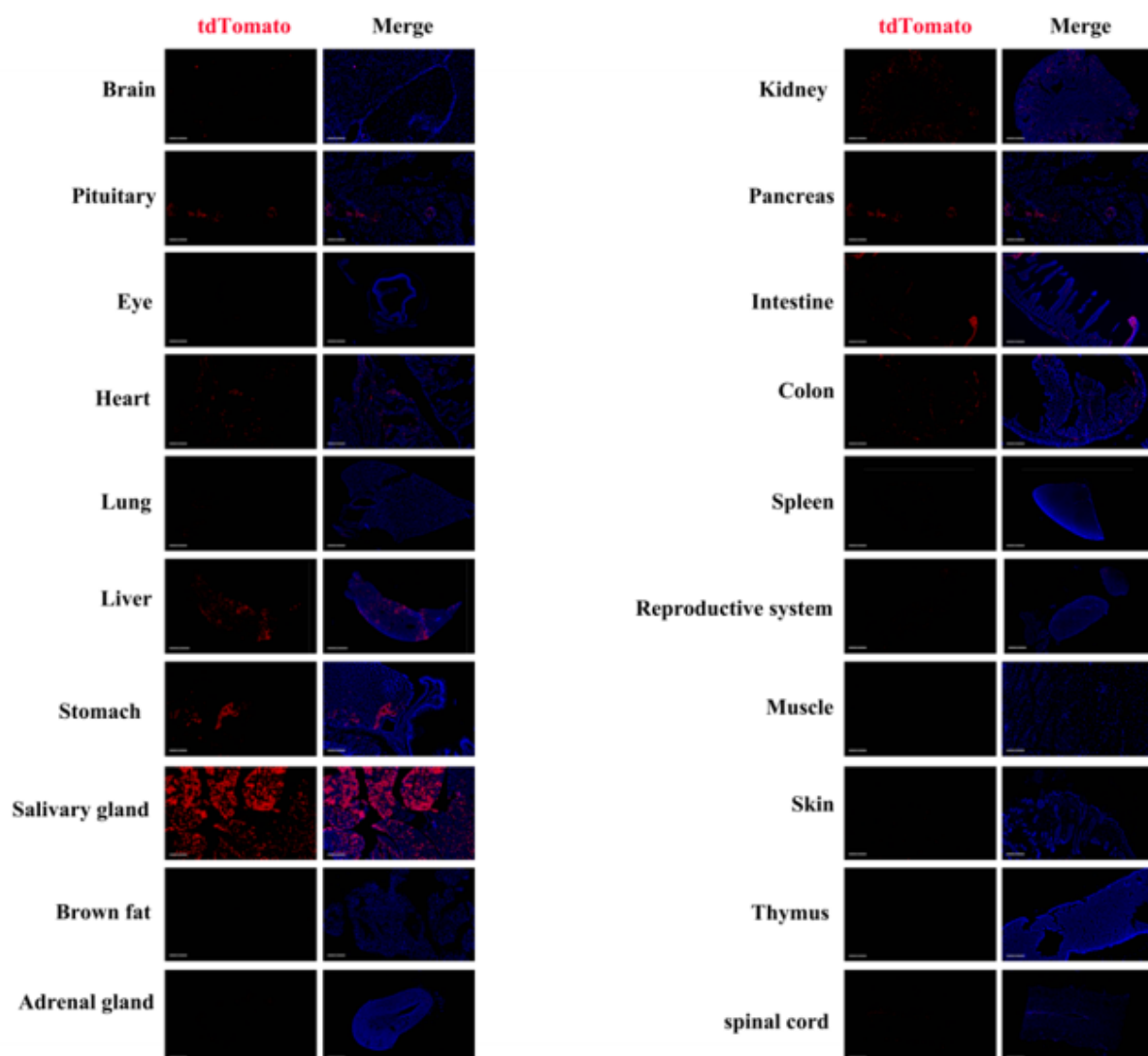


Fig2. Detection of tdTomato(red) in various tissues of Cd2Cre/+;Rosa26tdTomato/+ mouse. Expression tissues include: heart, liver, salivary glands, kidney, spleen, small intestine, colon, testicles. Tissues that unexpressed include brown fat, adrenal gland, muscle. (5-month old, male) (For more detailed information please contact our technical advisor.)