

# Eno2-2A-CreERT2

<b>Nomenclature</b>	C57BL/6Smoc- <i>Eno2</i> <sup>em1(2A-CreERT2)Smoc</sup>
<b>Cat. NO.</b>	NM-KI-200011
<b>Strain State</b>	Repository Live

## Gene Summary

<b>Gene Symbol</b> <b>Eno2</b>	<b>Synonyms</b>	NSE; Eno-2; AI837106; D6Ert375e
	<b>NCBI ID</b>	<a href="#">13807</a>
	<b>MGI ID</b>	<a href="#">95394</a>
	<b>Ensembl ID</b>	<a href="#">ENSMUSG000000004267</a>
	<b>Human Ortholog</b>	ENO2

## Model Description

A 2A-CreERT2 expression cassette was knocked into the Eno2 gene stop codon site.

**Research Application:** Eno2-2A-CreERT2 mice express the tamoxifen inducible creERT2 in the nervous system. CreERT2 mediated recombination can also be detected in the muscle.

\*Literature published using this strain should indicate: Eno2-2A-CreERT2 mice (Cat. NO. NM-KI-200011) were purchased from Shanghai Model Organisms Center, Inc..

## Validation Data

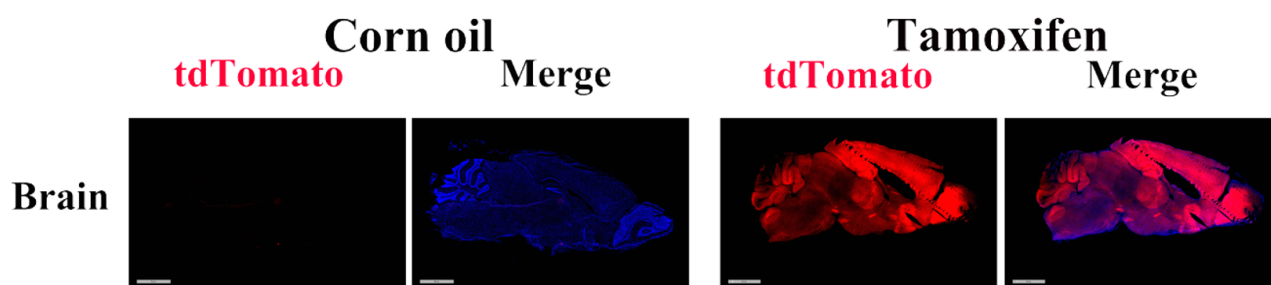


Fig. 1 CreERT2-mediated recombination in the brain of *Eno2*<sup>CreERT2/+</sup>; *Rosa26*<sup>tdTomato/+</sup> mouse.

Detection of tdTomato (red) in the brain of *Eno2*<sup>CreERT2/+</sup>; *Rosa26*<sup>tdTomato/+</sup> mouse after tamoxifen treatment.

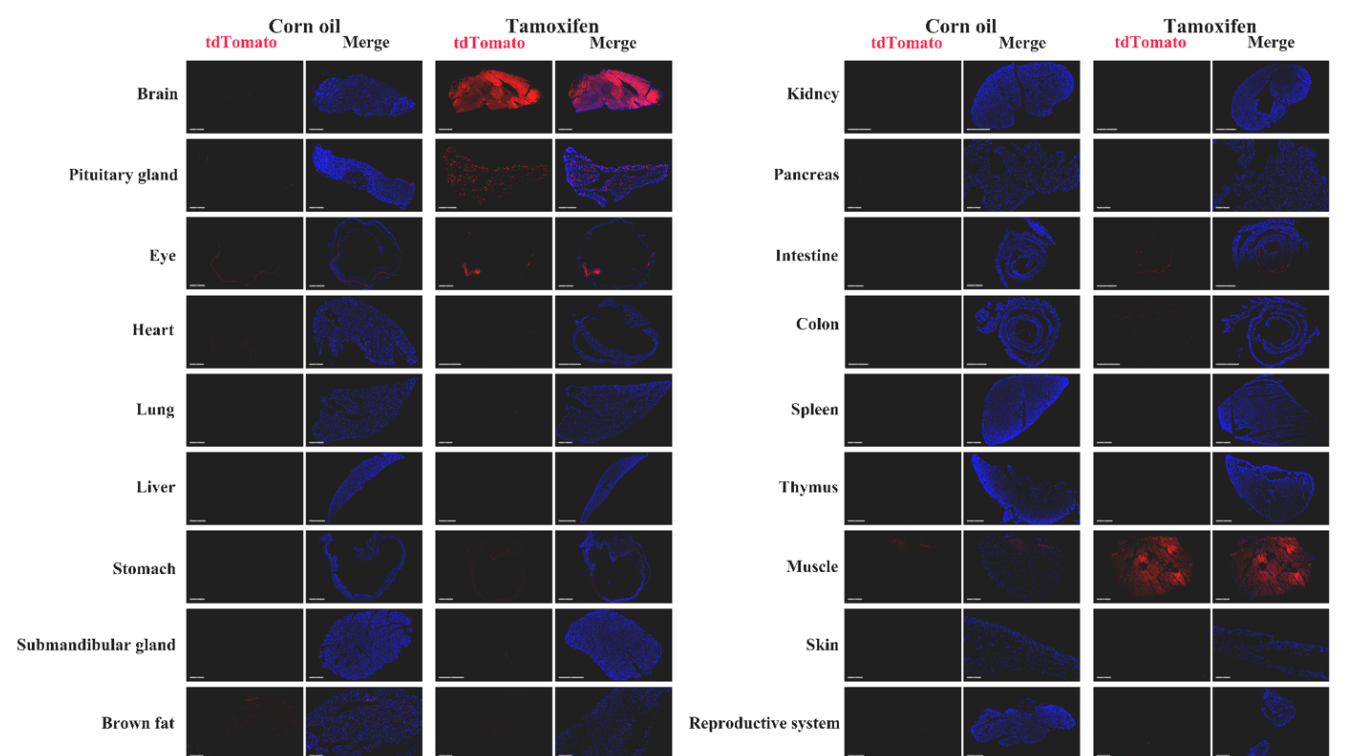


Fig. 2: Detection of tdTomato in various tissues of  $Eno2^{CreERT2/+}; Rosa26^{tdTomato/+}$  mice. CreERT2 mediated recombination can be detected in the brain. Some leakiness were detected in the muscle. (For more detailed information please contact our technical advisor.)