

# Tac1-IRES-Cre

<b>Nomenclature</b>	C57BL/6Smoc- <i>Tac1</i> <sup>em1(IRES2-iCre)Smoc</sup>
<b>Cat. NO.</b>	NM-KI-200083
<b>Strain State</b>	Developing

## Gene Summary

<b>Gene Symbol</b> <b>Tac1</b>	<b>Synonyms</b>	SP; NK1; NK-1; Nkna; PPTA; PPT-A; 4930528L02Rik
	<b>NCBI ID</b>	<a href="#">21333</a>
	<b>MGI ID</b>	<a href="#">98474</a>
	<b>Ensembl ID</b>	<a href="#">ENSMUSG000000061762</a>
	<b>Human Ortholog</b>	TAC1

## Model Description

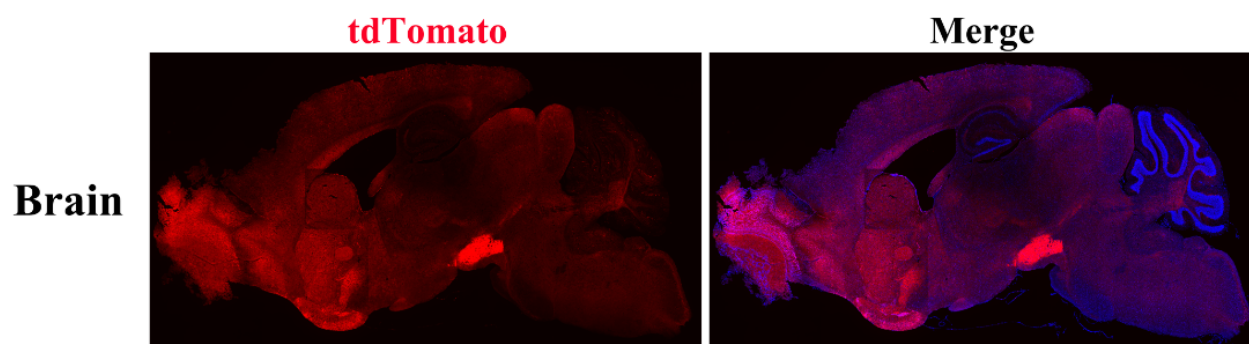
A IRES-Cre expression cassette was knocked into the Tac1 gene stop codon site.

**Research Application:** Cre recombinase tool

\*Literature published using this strain should indicate: Tac1-IRES-Cre mice (Cat. NO. NM-KI-200083) were purchased from Shanghai Model Organisms Center, Inc..

## Validation Data

A



B

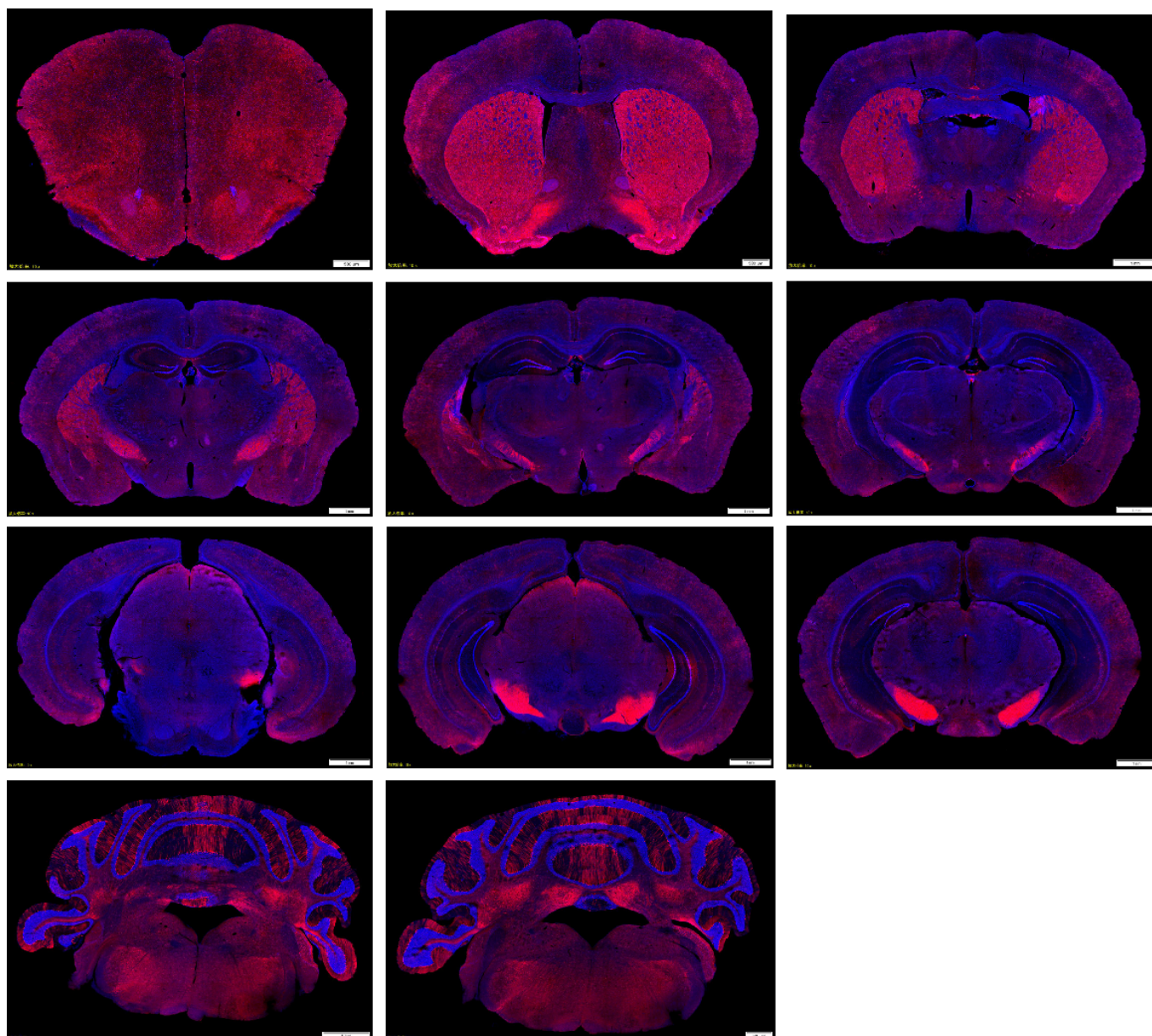


Figure 1: Cre-mediated recombination in the brain of *Tac1iCre/+; Rosa26tdTomato/+* mouse. Detection of tdTomato (red) in the brain of *Tac1iCre/+; Rosa26tdTomato/+* mouse .

Figure A: sagittal plane of the brain;

Figure B: coronal plane of the brain(Collaborate with our customer).

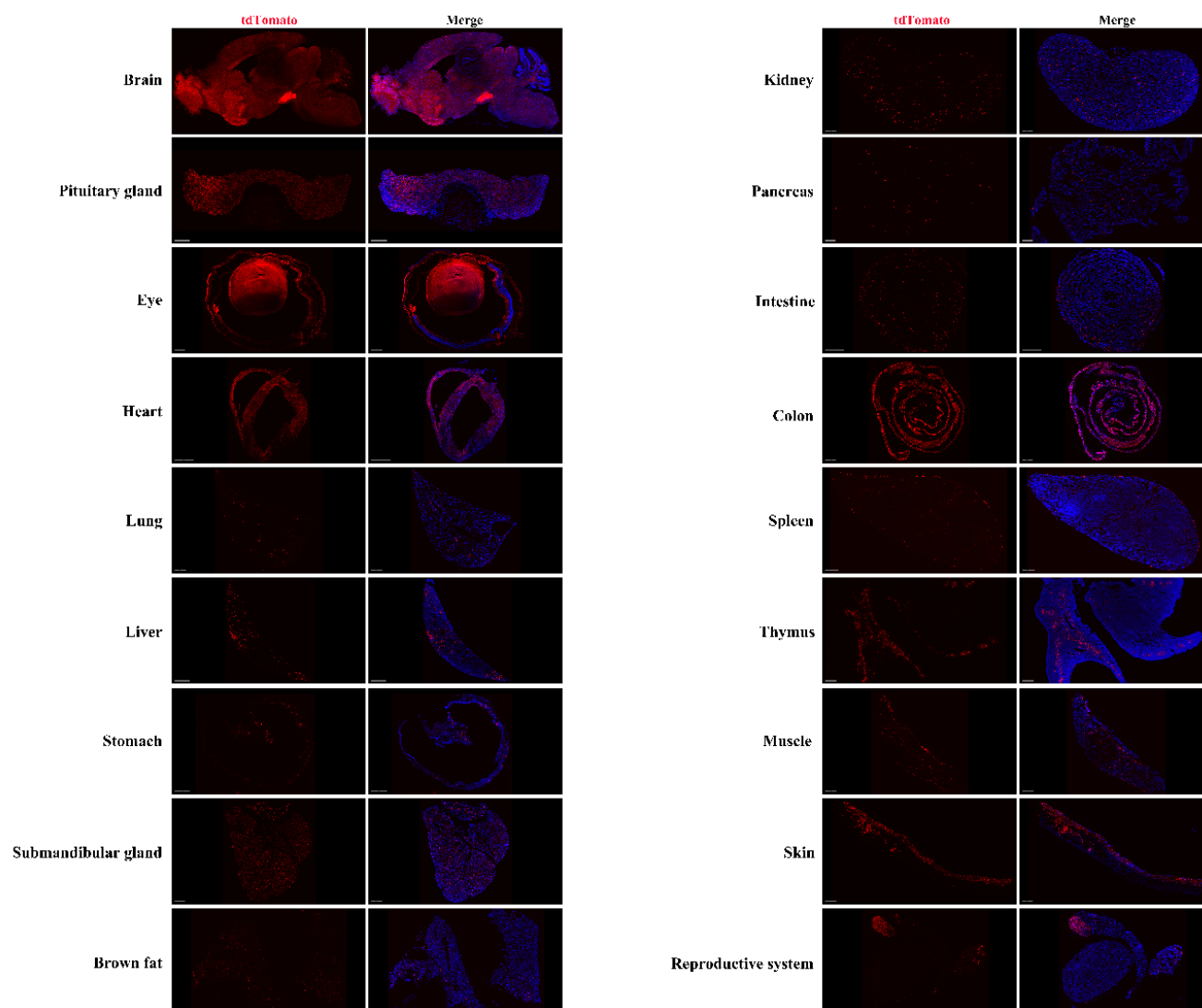


Figure 2: Detection of tdTomato (red) in various tissues of *Tac1iCre/+; Rosa26tdTomato/+* mice.