

# Foxg1-Cre

<b>Nomenclature</b>	C57BL/6Smoc- <i>Foxg1</i> <sup>em1(Cre-WPRE-polyA)Smoc</sup>
<b>Cat. NO.</b>	NM-KI-200156
<b>Strain State</b>	Sperm cryopreservation

## Gene Summary

<b>Gene Symbol</b>	<b>Synonyms</b>	Bf1, BF-1, Hfh9, Hfhbf1, 2900064B05Rik
	<b>NCBI ID</b>	<a href="#">15228</a>
	<b>MGI ID</b>	<a href="#">1347464</a>
	<b>Ensembl ID</b>	<a href="#">ENSMUSG00000020950</a>
	<b>Human Ortholog</b>	FOXG1

## Model Description

A Cre-WPRE-polyA expression cassette was knocked into the Foxg1 gene start codon site.

**Research Application:** Cre recombinase tool

\*Literature published using this strain should indicate: Foxg1-Cre mice (Cat. NO. NM-KI-200156) were purchased from Shanghai Model Organisms Center, Inc..

## Validation Data

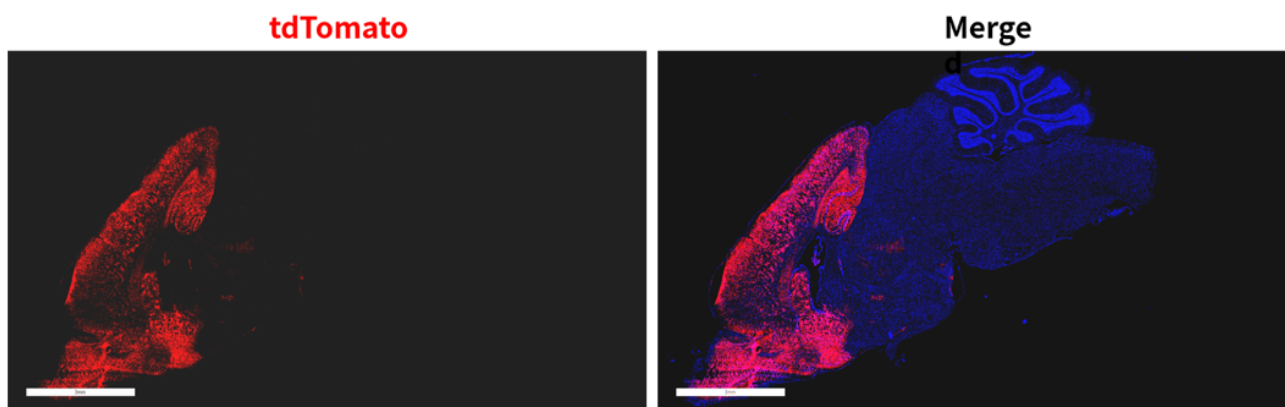
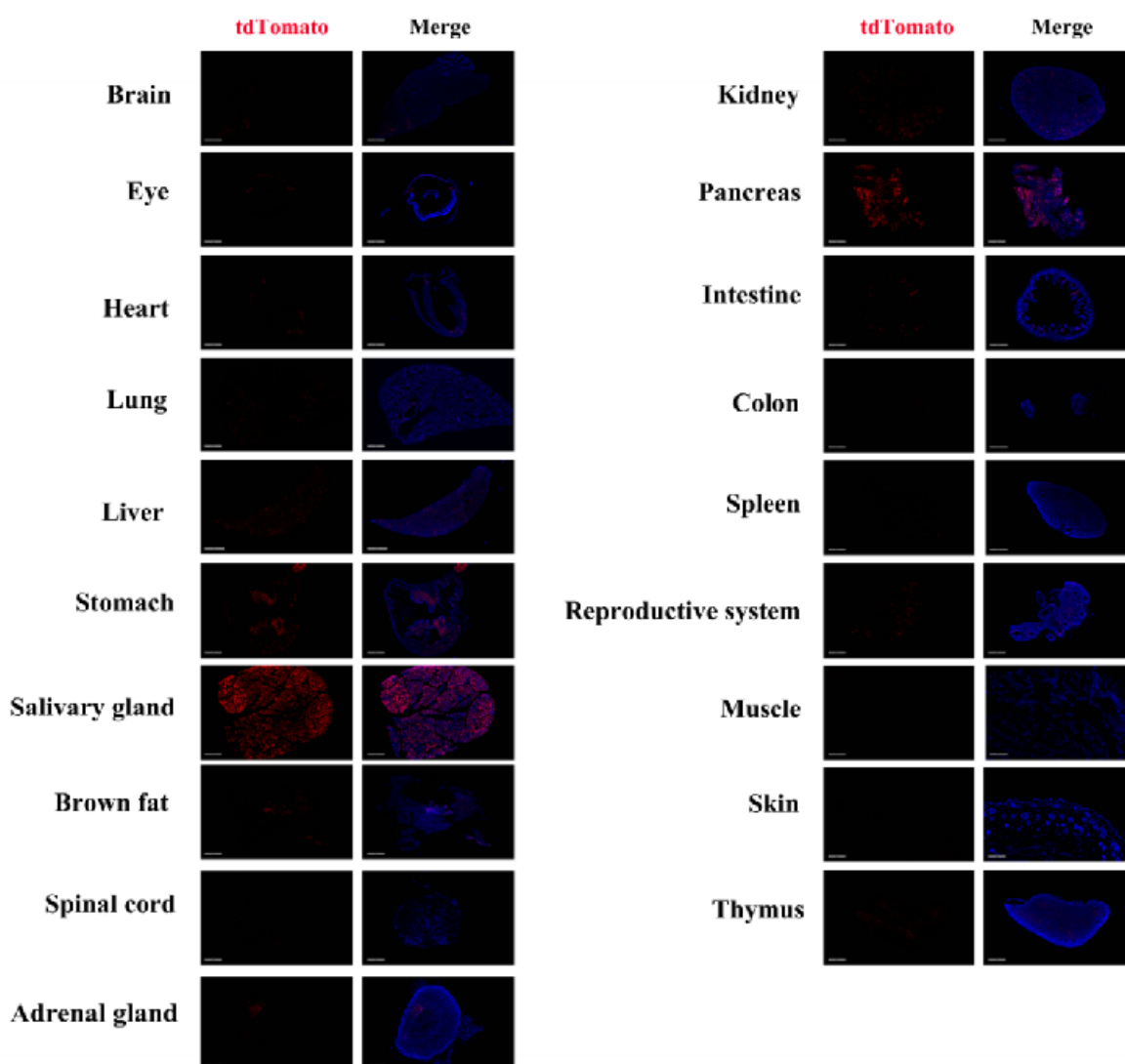


Fig 1. Cre-mediated recombination in brain of  $Foxg1^{Cre/+}$ ;  $Rosa26^{tdTomato/+}$  mice.



**Fig 2. Detection of tdTomato (red) in various tissues of  $Foxg1^{Cre/+}$ ;  $Rosa26^{tdTomato/+}$  mice.**

Expression tissues include: brain, retina, heart, lung, liver, stomach, salivary glands, brown fat, kidney, pancreas, small intestine, large intestine, ovary, thymus, adrenal gland. A few cells expressed in spinal cord, spleen, muscle, skin. (9-week old, female) (For more detailed information please contact our technical advisor.)