

Il1b-Luc-2A-EGFP

| | |
|---------------------|---|
| Nomenclature | C57BL/6Smoc- <i>Il1b</i> ^{em1(Luc-eGFP)Smoc} |
| Cat. NO. | NM-KI-00010 |
| Strain State | Repository Live |

Gene Summary

| | | |
|----------------------------|-----------------------|-------------------------------------|
| Gene Symbol IL1B | Synonyms | Il-1b; IL-1beta |
| | NCBI ID | 16176 |
| | MGI ID | 96543 |
| | Ensembl ID | ENSMUSG000000027398 |
| | Human Ortholog | IL1B |

Model Description

A Luciferase-2A-EGFP-pA cassette was inserted at ATG site of mouse Il1b gene. The intrinsic promoter drives the expression of reporter genes, which reflects the activity of Il1b.

Research Application: Inflammation and immunity, gene tracing

*Literature published using this strain should indicate: Il1b-Luc-2A-EGFP mice (Cat. NO. NM-KI-00010) were purchased from Shanghai Model Organisms Center, Inc..

Validation Data

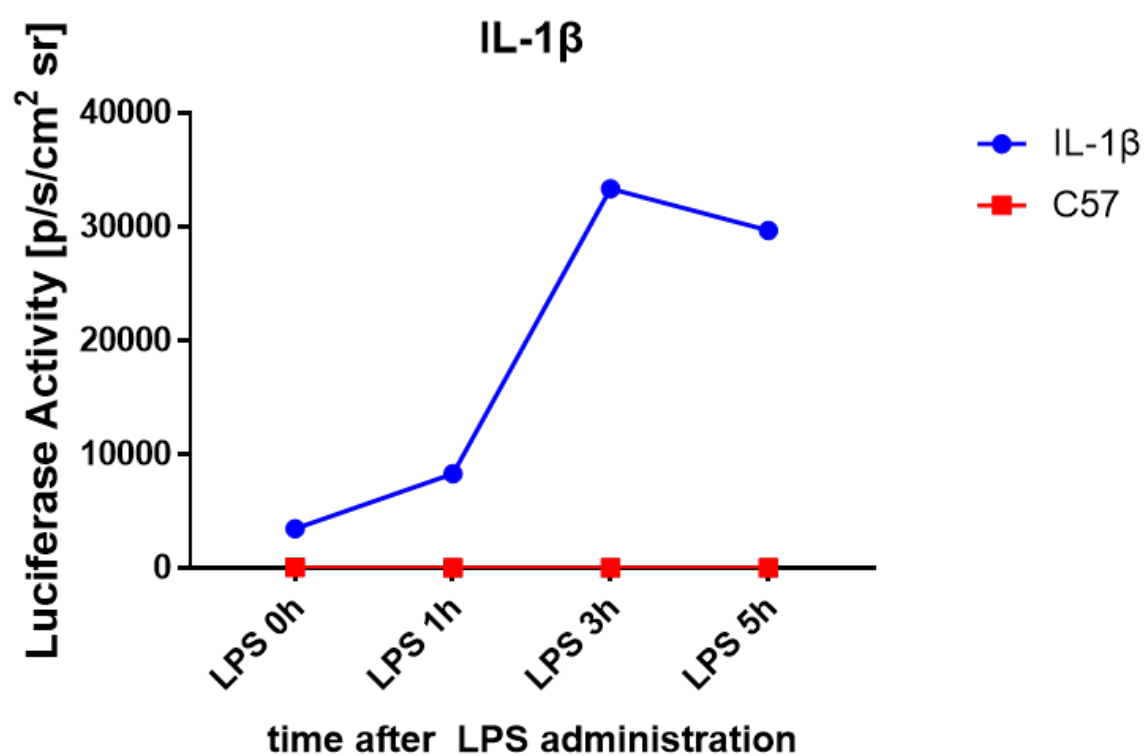
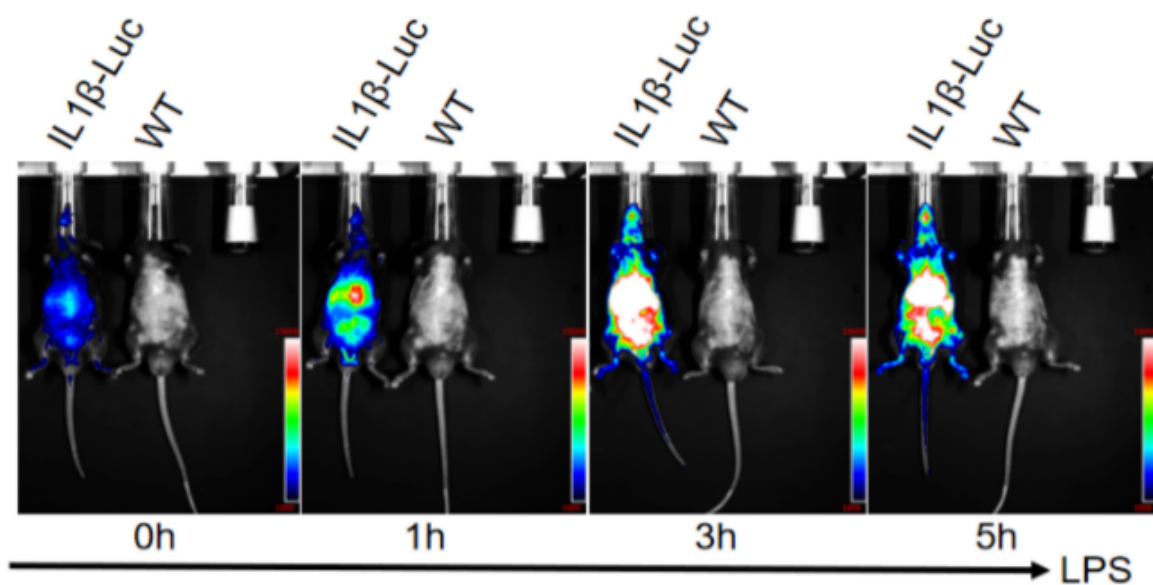


Fig1. IL1 β reporter gene expression in the mice was monitored through noninvasive molecular imaging. IL1 β in the mouse body was activated through LPS treatment.

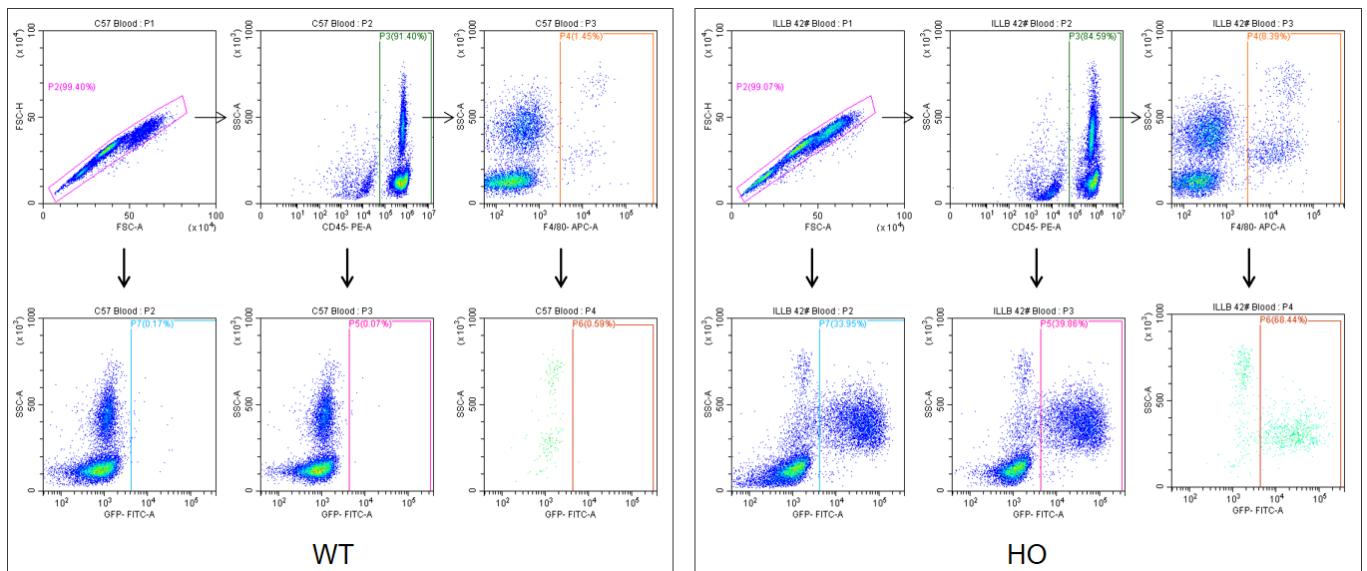


Fig2. Analysis of EGFP expression in PBMC by FACS. The homozygous KI mouse expresses EGFP in F4/80+ macrophages in peripheral blood.

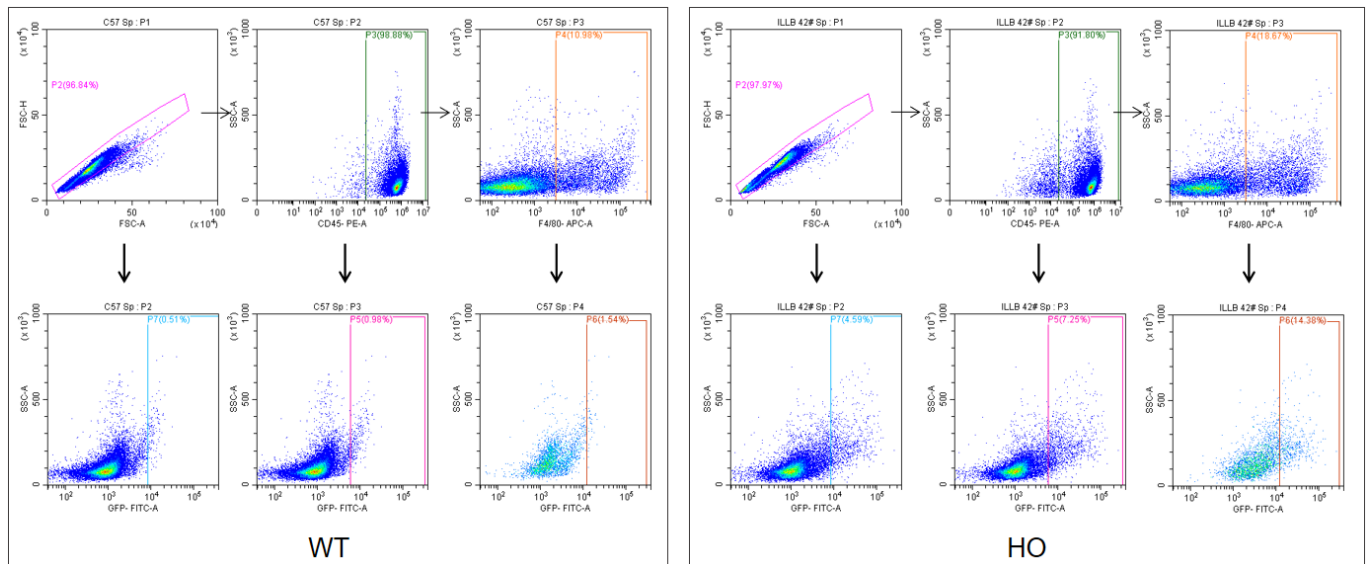


Fig3. Analysis of EGFP expression in the spleen by FACS. The homozygous KI mouse expresses EGFP in F4/80+ macrophages in the spleen.

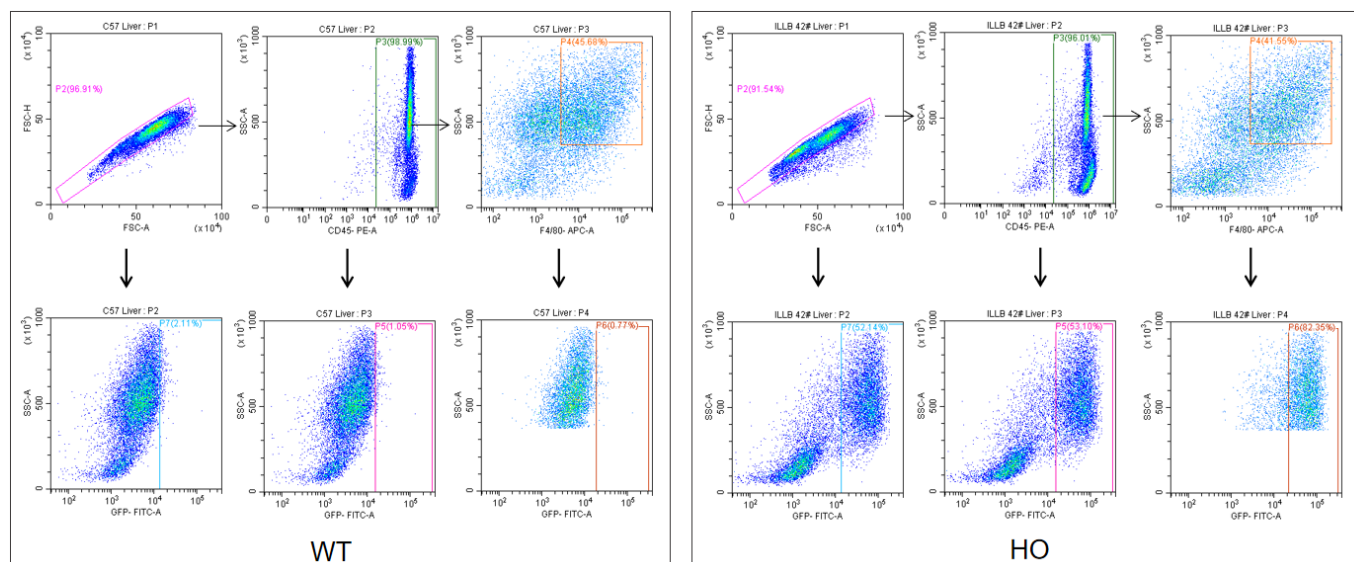


Fig4. Analysis of EGFP expression in the liver by FACS. The homozygous KI mouse expresses EGFP in F4/80+ macrophages in the liver.

Publications

[Acute pancreatic beta cell apoptosis by IL-1 \$\beta\$ is responsible for postburn hyperglycemia: Evidence from humans and mice](#)

References: ELSEVIER