

786-O-Luc

Strain Information

Cat. NO.	NM-SA01-1
Cell Line	786-O-Tg(luc)/Smoc
Strain State	Validation of tumorigenic capacity completed
Model	Luciferase-labeled human 786-O cell.
Description	*Literature published using this strain should indicate: 786-O-Luc cell line (Cat. NO. NM-SA01-1) was purchased from Shanghai Model Organisms Center, Inc..

Validation Data

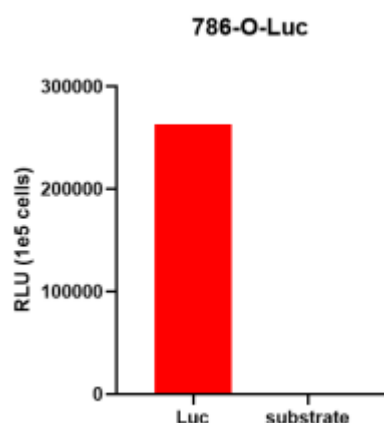


Figure 1. Luciferase activity assay of 786-O-Luc cell line

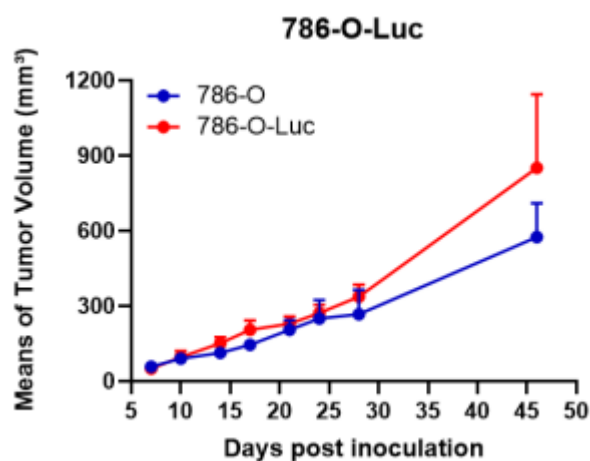


Figure 2. Signal change curve of 786-O-Luc xenograft model (n=5)

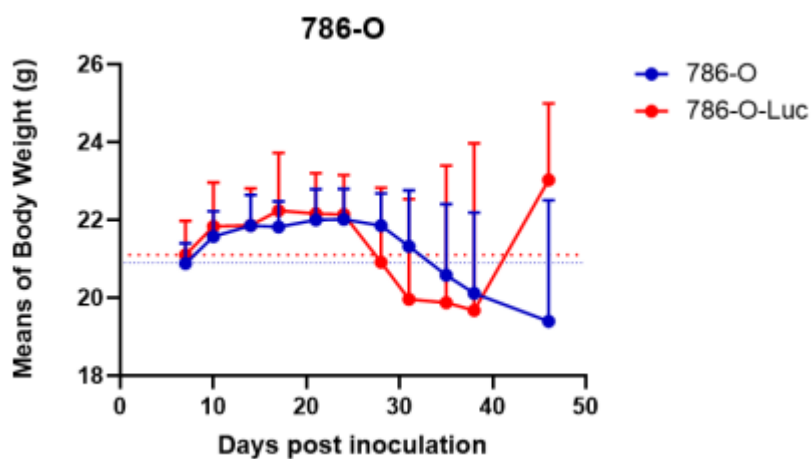


Figure 3. Body weight change of 786-O-Luc xenograft model (n=5)

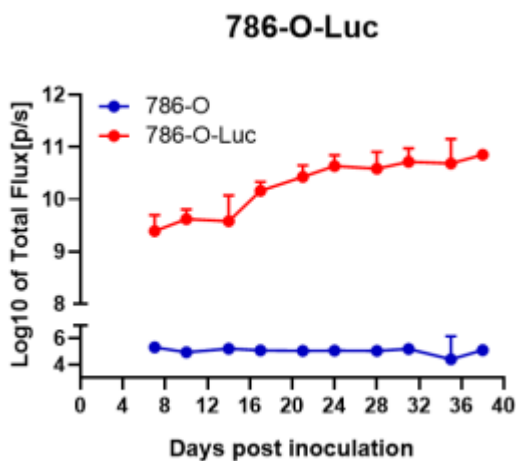


Figure 4. Signal increase curve in tumor site of 786-O-Luc xenograft model (n=5)

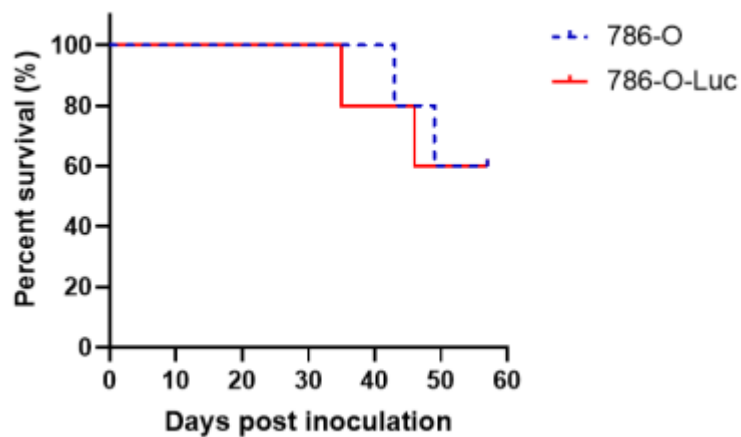


Figure 5. Survival curve of 786-O-Luc xenograft mouse model (n=5)

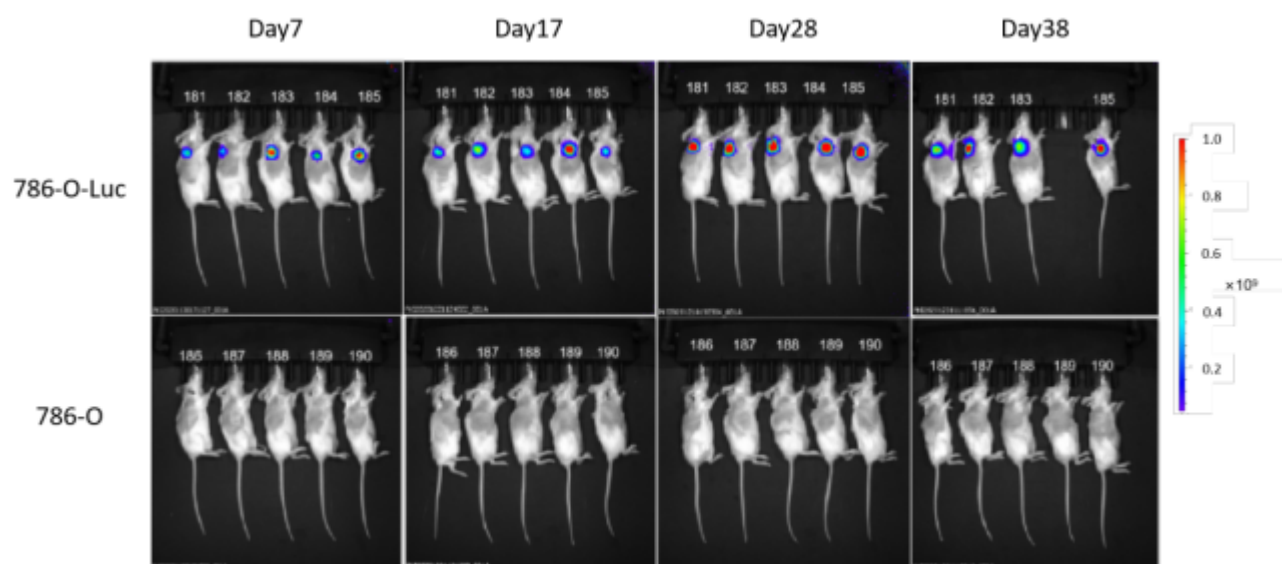


Figure 6. Bioluminescence imaging of 786-O-Luc xenograft mode