

# Krt15-IRES-Cre

<b>Nomenclature</b>	C57BL/6Smoc- <i>Krt15</i> <sup>em(IRES-Cre-WPRE-pA)1Smoc</sup>
<b>Cat. NO.</b>	NM-KI-225057
<b>Strain State</b>	Sperm cryopreservation

## Gene Summary

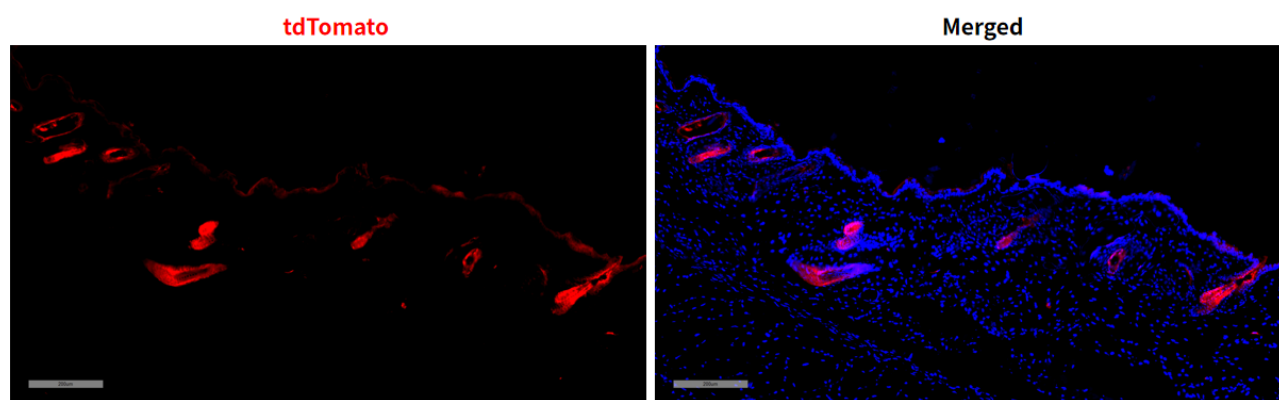
<b>Gene Symbol</b> <b>Krt15</b>	<b>Synonyms</b>	K15; Krt1-15; AI528832
	<b>NCBI ID</b>	<a href="#">16665</a>
	<b>MGI ID</b>	<a href="#">96689</a>
	<b>Ensembl ID</b>	<a href="#">ENSMUSG000000054146</a>
	<b>Human Ortholog</b>	KRT15

## Model Description

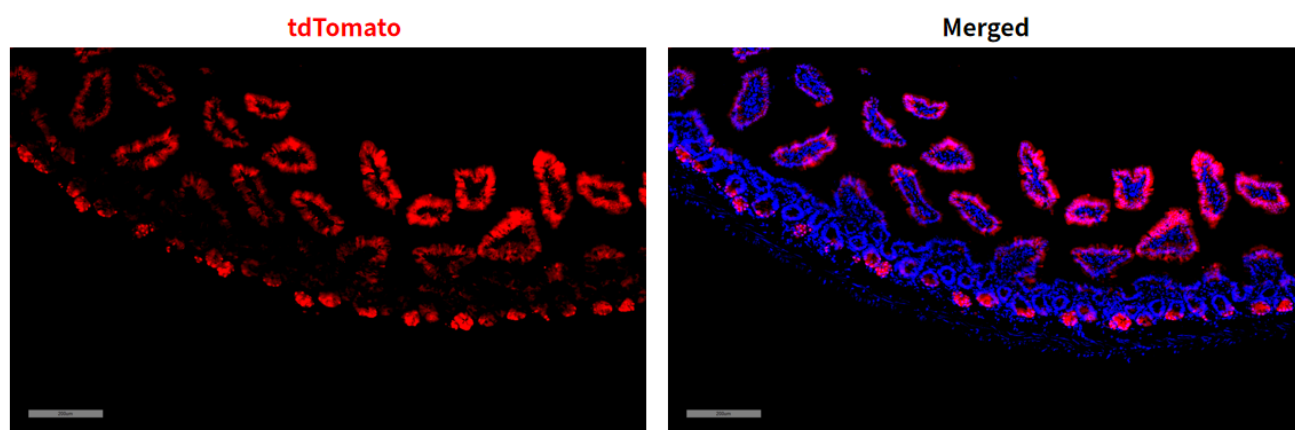
IRES-Cre-WPRE-pA expression cassette was knocked into the Krt15 gene .

\*Literature published using this strain should indicate: Krt15-IRES-Cre mice (Cat. NO. NM-KI-225057) were purchased from Shanghai Model Organisms Center, Inc..

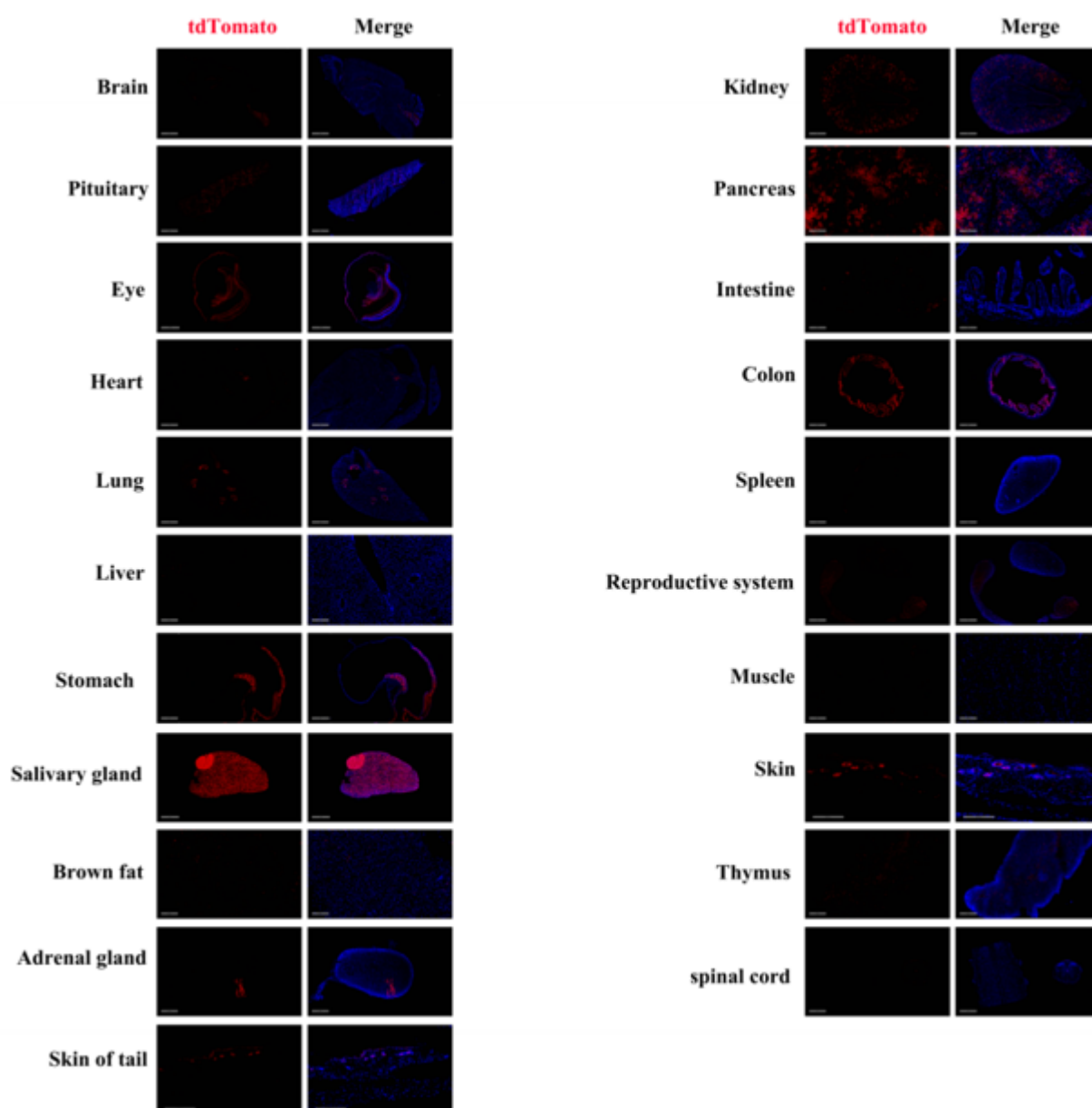
## Validation Data



**Fig 1. Cre-mediated recombination in skin of Krt15<sup>Cre/+</sup>; Rosa26<sup>tdTomato/+</sup> mice.**



**Fig 2. Cre-mediated recombination in small intestine of  $Krt15^{Cre/+}$ ;  $Rosa26^{tdTomato/+}$  mice.**



**Fig 3. Detection of tdTomato (red) in various tissues of  $Krt15^{Cre/+}$ ;  $Rosa26^{tdTomato/+}$  mice.** Expression tissues include: skin, brain, pituitary gland, retina, cornea, lung, stomach, salivary gland, brown

fat, adrenal gland, kidney, pancreas, small intestine, large intestine, testis, epididymis, thymus. A few cells expressed in heart, liver, spleen, muscle, spinal cord. (11-week old, male) (For more detailed information please contact our technical advisor.)

---