

KPC-OVA-Luc

Strain Information

Cat. NO.	NMC-230049
Cell Line	KPC-OVA-Luc
Strain State	Validation of tumorigenic capacity completed
Model Description	The KPC-OVA-Luc cell line is a KPC cell line with stable and high expression of OVA.
	*Literature published using this strain should indicate: KPC-OVA-Luc cell line (Cat. NO. NMC-230049) was purchased from Shanghai Model Organisms Center, Inc..

Validation Data

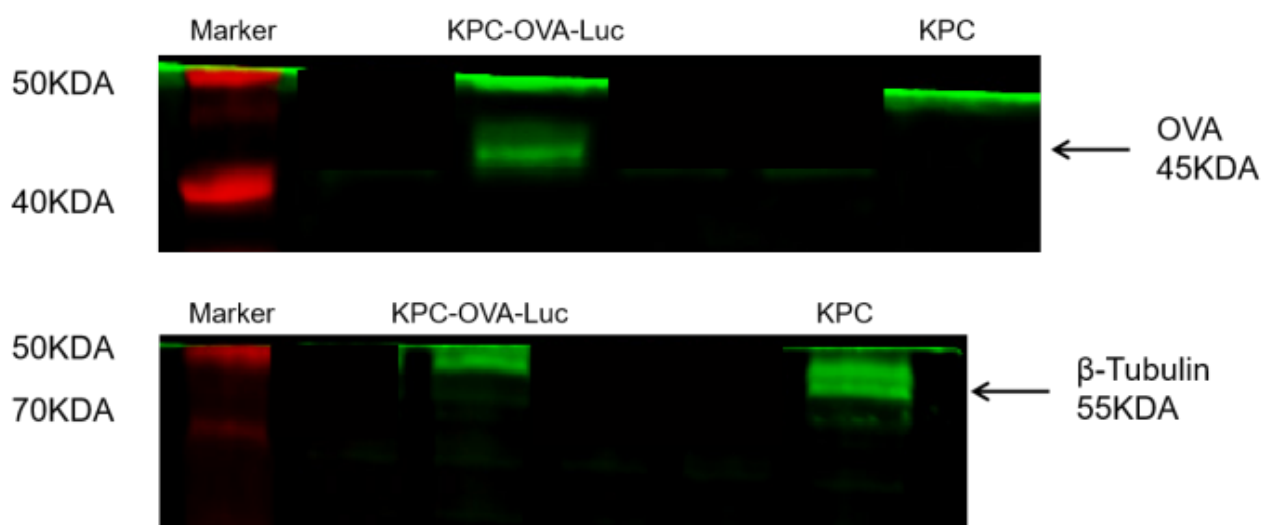


Figure 1. OVA expression in wild-type KPC and KPC-OVA-Luc cell lines.

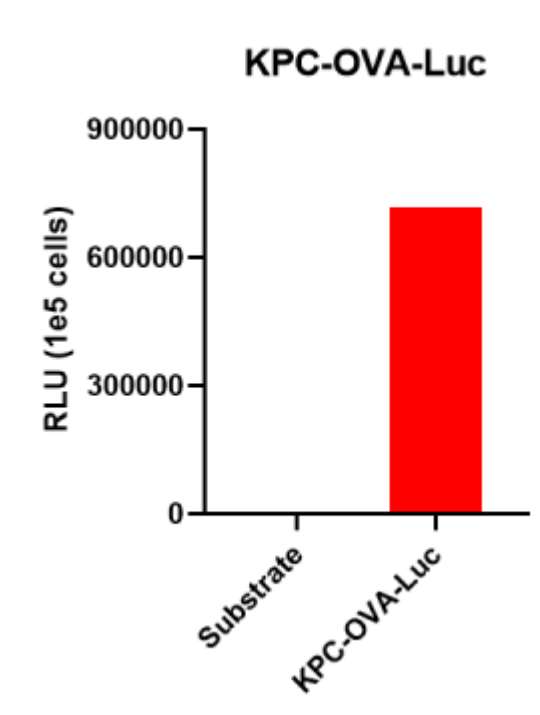


Figure 2. Luciferase activity assay of KPC-OVA-Luc cell line.

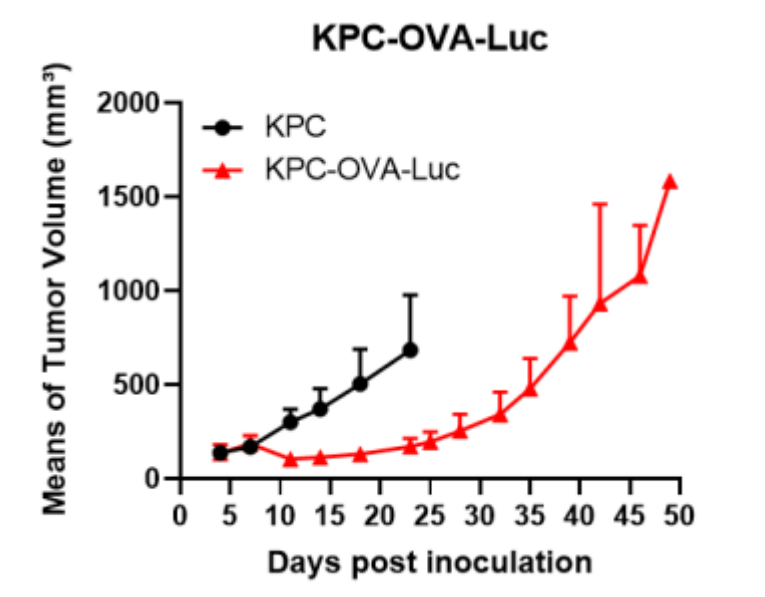


Figure 3. Tumor growth curve of KPC and KPC-OVA-Luc syngeneic model (n=4).

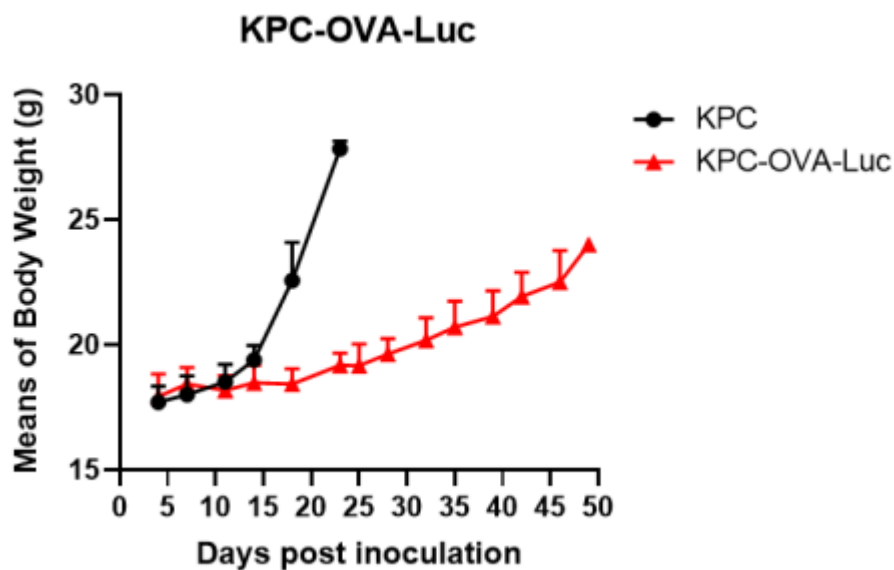


Figure 4. Body weight curve of KPC and KPC-OVA-Luc syngeneic model (n=4).

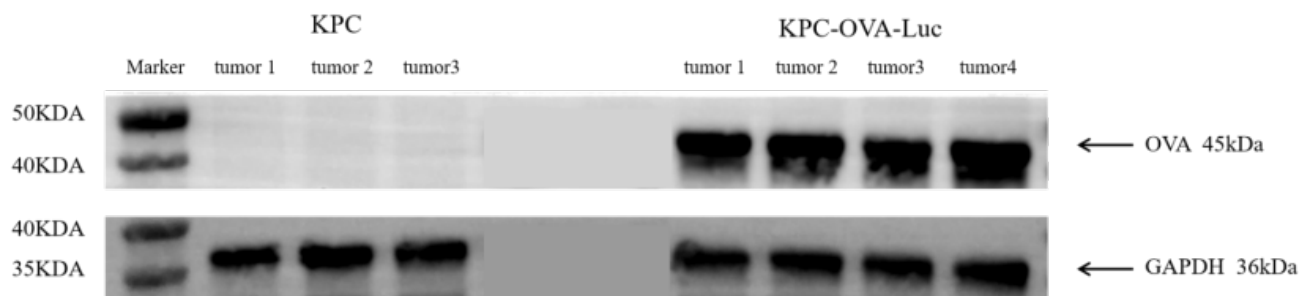


Figure 5. The expression of OVA in tumors by Western Blot.