

hHER2*ex20ins-IRES-Luc-2A-EGFP

Strain Information

Cat. NO.	NM-YD09
Cell Line	hHER2*ex20ins-IRES-Luc-2A-EGFP
Strain State	Validation of tumorigenic capacity completed
Model Description	derived from R26-CAG-LSL-hHER2*ex20ins-IRES-Luc-2A-EGFP mice (NM-KI-190071) spontaneous breast cancer model
	*Literature published using this strain should indicate: hHER2*ex20ins-IRES-Luc-2A-EGFP cell line (Cat. NO. NM-YD09) was purchased from Shanghai Model Organisms Center, Inc..

Validation Data

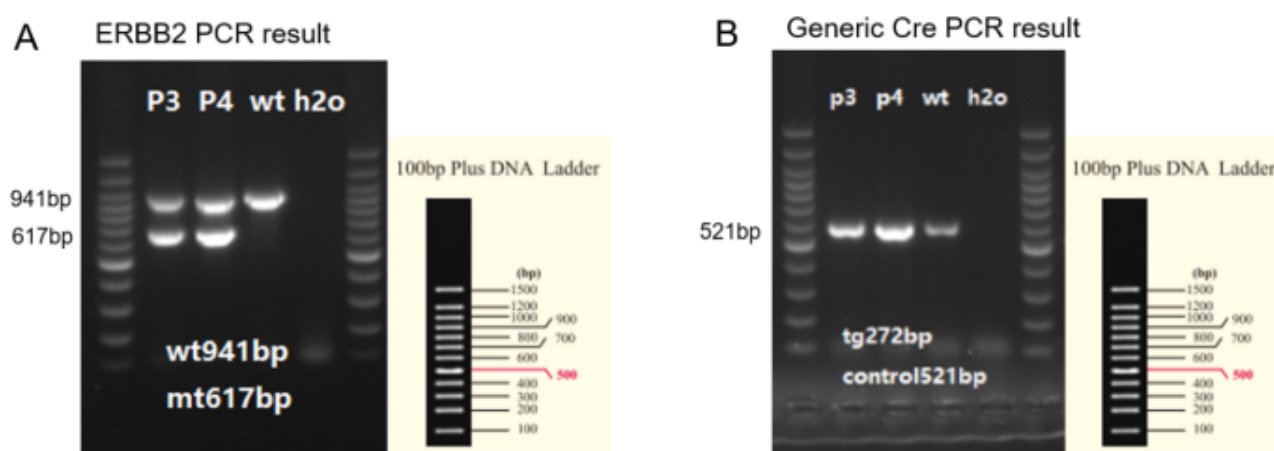


Fig1. The genotype of hHER2*ex20ins-IRES-Luc-2A-EGFP cell was identified by PCR

WT: wild-type cells; H2O: negative water control; 100bp DNA marker from Transgen (BM311)

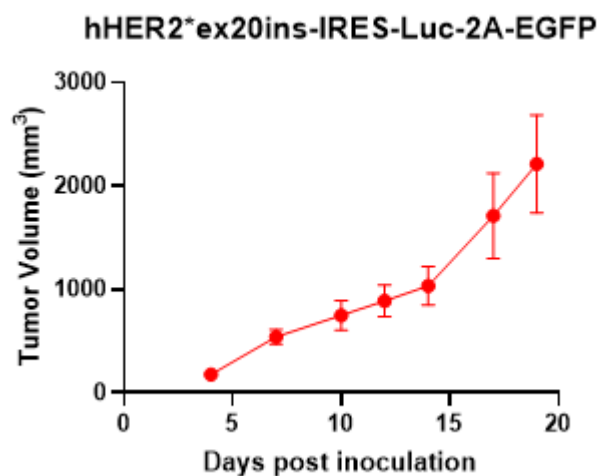


Fig2. Tumor growth curve in hHER2*ex20ins-IRES-Luc-2A-EGFP subcutaneously transplanted tumor model (n=9)

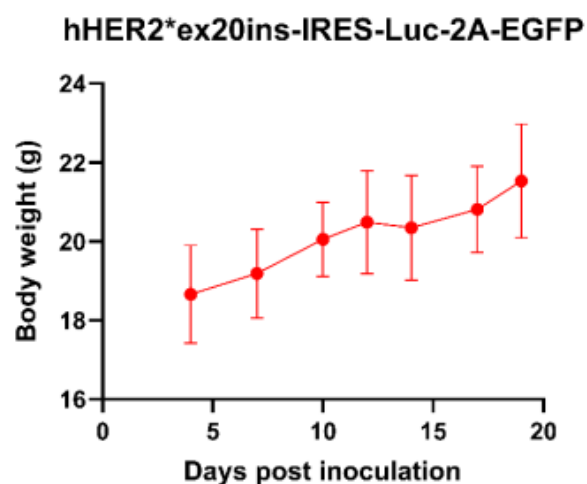
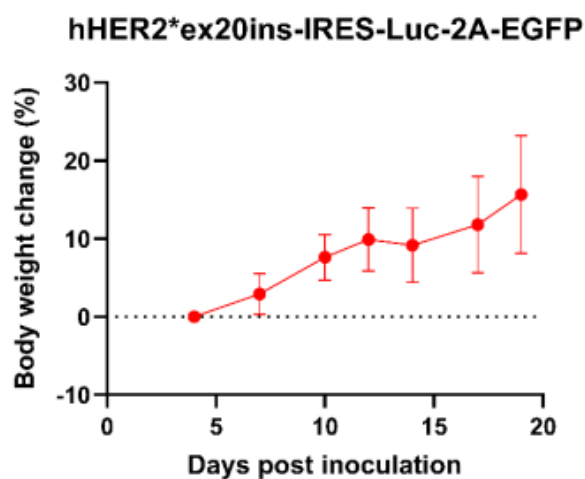


Fig3. Body weight change in hHER2*ex20ins-IRES-Luc-2A-EGFP subcutaneously transplanted tumor model (n=9)

Day24

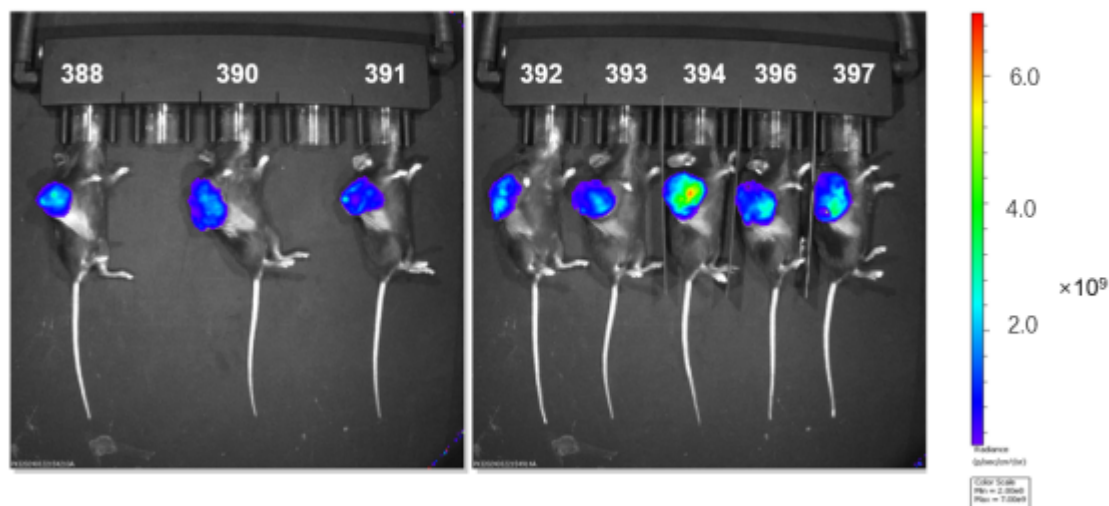


Fig4. Bioluminescence imaging of hHER2*ex20ins-IRES-Luc-2A-EGFP
subcutaneously transplanted tumor model at the end of timepoint
