

# Ly6a-2A-Cre

<b>Nomenclature</b>	C57BL/6Smoc- <i>Ly6a</i> <sup>em1(2A-iCre)Smoc</sup>
<b>Cat. NO.</b>	NM-KI-190028
<b>Strain State</b>	Repository Live

## Gene Summary

<b>Gene Symbol</b> <b>Ly6a</b>	<b>Synonyms</b>	TAP; Sca1; Sca-1; Ly-6A.2; Ly-6A/E; Ly-6E.1
	<b>NCBI ID</b>	<a href="#">110454</a>
	<b>MGI ID</b>	<a href="#">107527</a>
	<b>Ensembl ID</b>	<a href="#">ENSMUSG00000075602</a>
	<b>Human Ortholog</b>	LY6A

## Model Description

A 2A-iCre expression cassette was knocked into the Ly6a gene stop codon site.

**Research Application:** Cre recombinase tool

\*Literature published using this strain should indicate: Ly6a-2A-Cre mice (Cat. NO. NM-KI-190028) were purchased from Shanghai Model Organisms Center, Inc..

## Validation Data

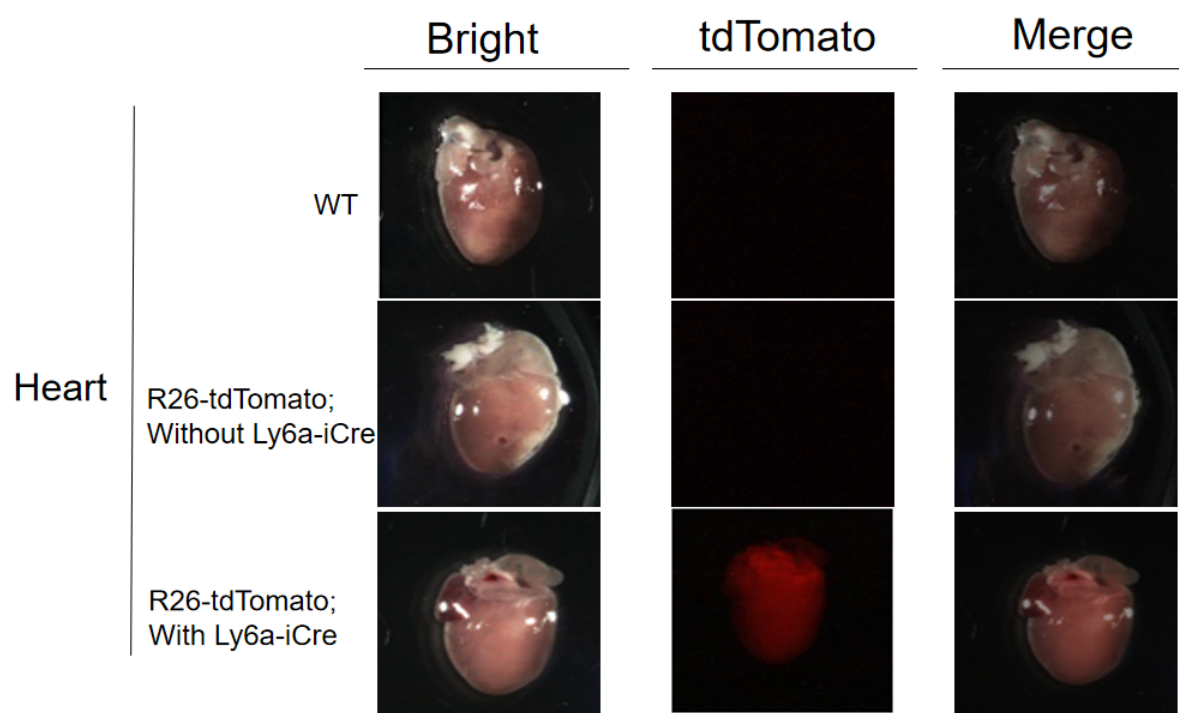


Fig1. Expression Pattern of Tomato in Ly6a-iCre<sup>+/-</sup> ; R26- tdTomato<sup>+/-</sup> mice.

Cre mediated recombination in heart of Ly6a-iCre <sup>+/-</sup> ; R26-tdTomato <sup>+/-</sup> mice.

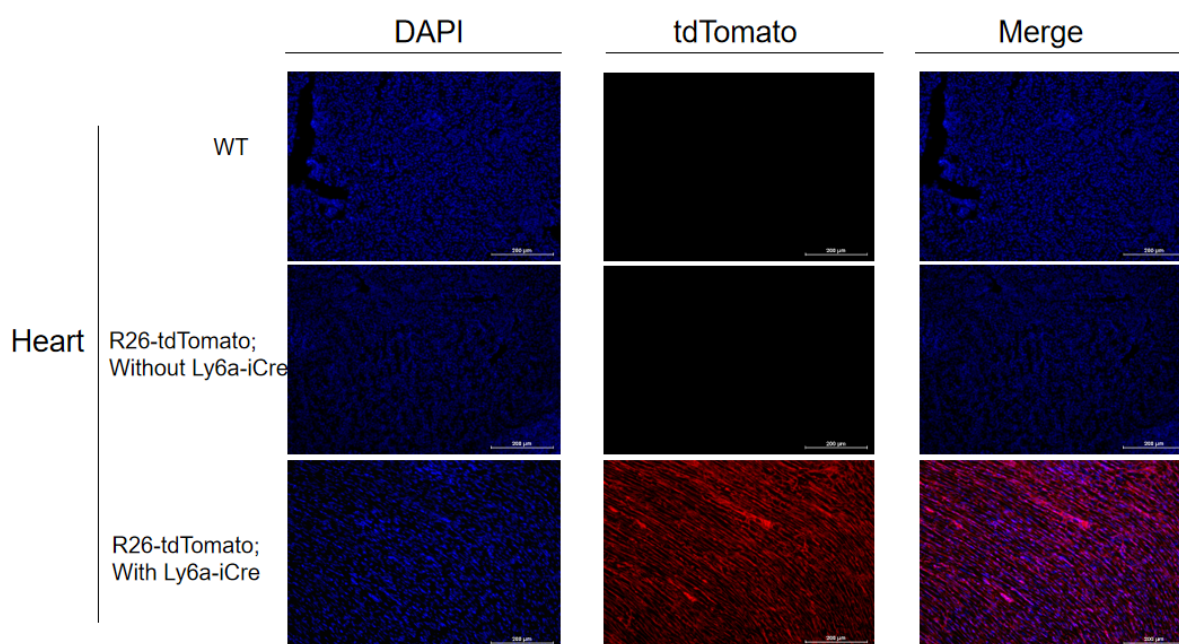


Fig2. Validation of tdTomato expression by fluorescence assay.

The heart of Ly6a-iCre mice were detected by fluorescence.

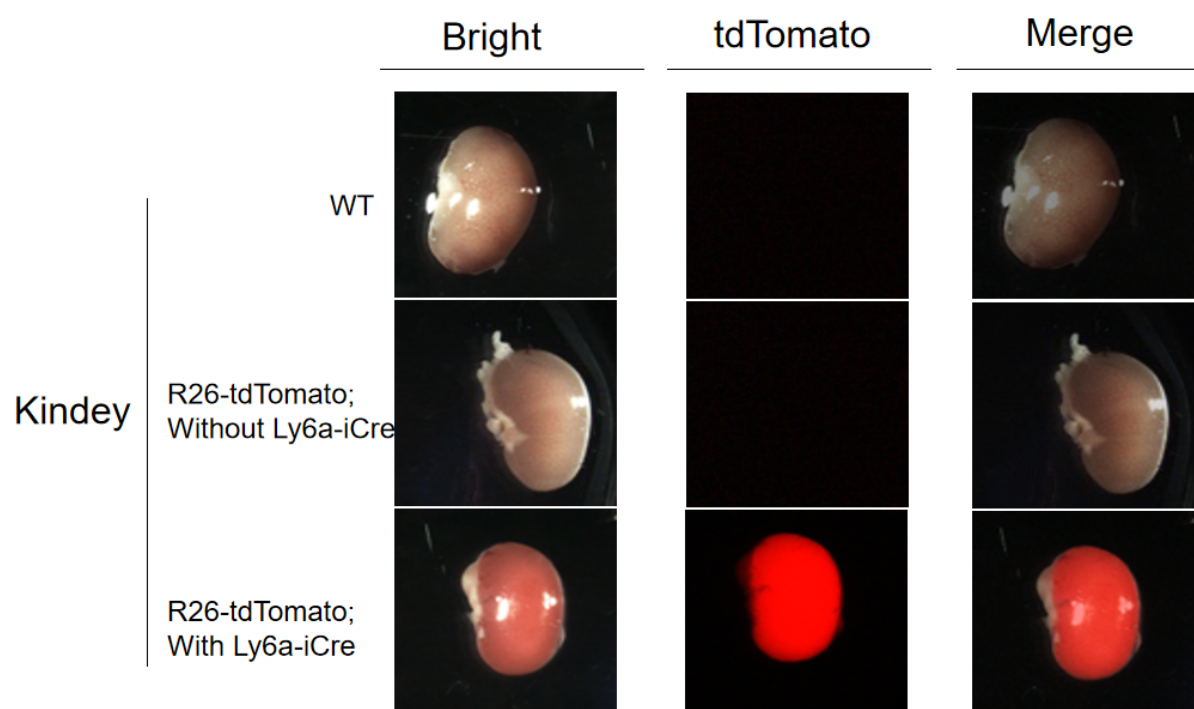


Fig3. Expression Pattern of Tomato in Ly6a-iCre<sup>+/-</sup> ; R26-tdTomato<sup>+/-</sup> mice.

Cre mediated recombination in kindey of Ly6a-iCre<sup>+/-</sup> ; R26-tdTomato <sup>+/-</sup> mice.

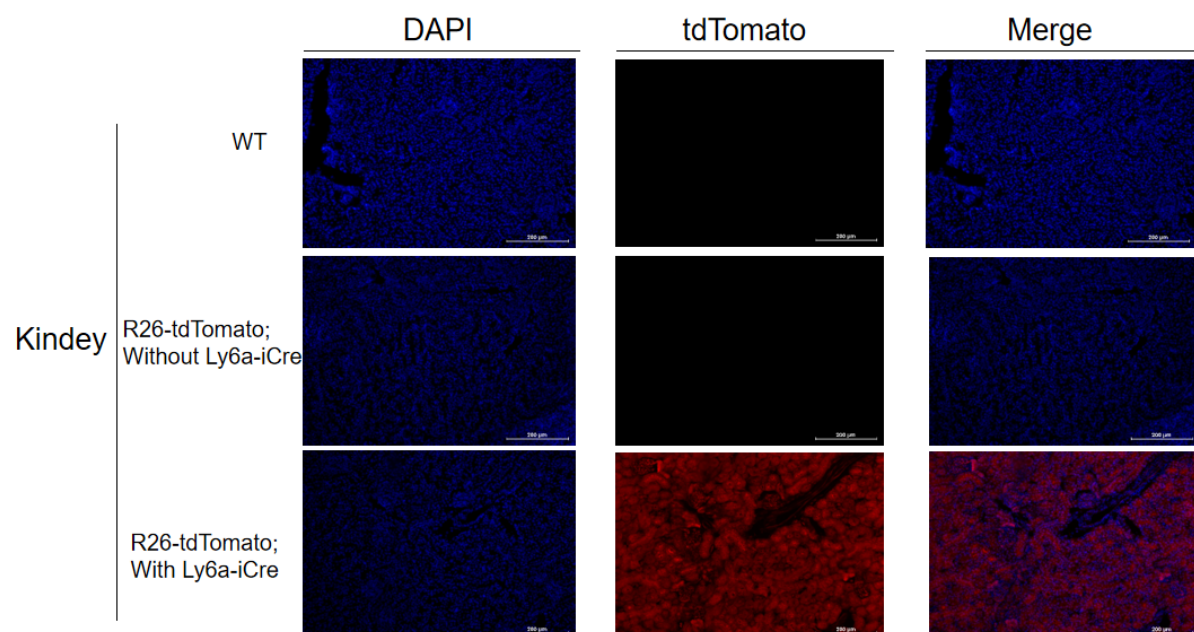


Fig4. Validation of tdTomato expression by fluorescence assay.

The kindey of Ly6a-iCre mice were detected by fluorescence.