

Slc34a1-CreERT2

Nomenclature	C57BL/6Smoc- <i>Slc34a1</i> ^{em1(CreERT2-SV40pA)Smoc}
Cat. NO.	NM-KI-210110
Strain State	Repository Live

Gene Summary

Gene Symbol Pvalb	Synonyms	PV; Pva; Parv
	NCBI ID	19293
	MGI ID	97821
	Ensembl ID	ENSMUSG000000005716
	Human Ortholog	PVALB

Model Description

CreERT2-SV40pA expression cassette was knocked into the Slc34a1 gene .

*Literature published using this strain should indicate: Slc34a1-CreERT2 mice (Cat. NO. NM-KI-210110) were purchased from Shanghai Model Organisms Center, Inc..

Validation Data



Fig1. CreERT2-mediated recombination in kidney of $Slc34a1^{CreERT2/+}$; $Rosa26^{tdTomato/+}$ mouse.

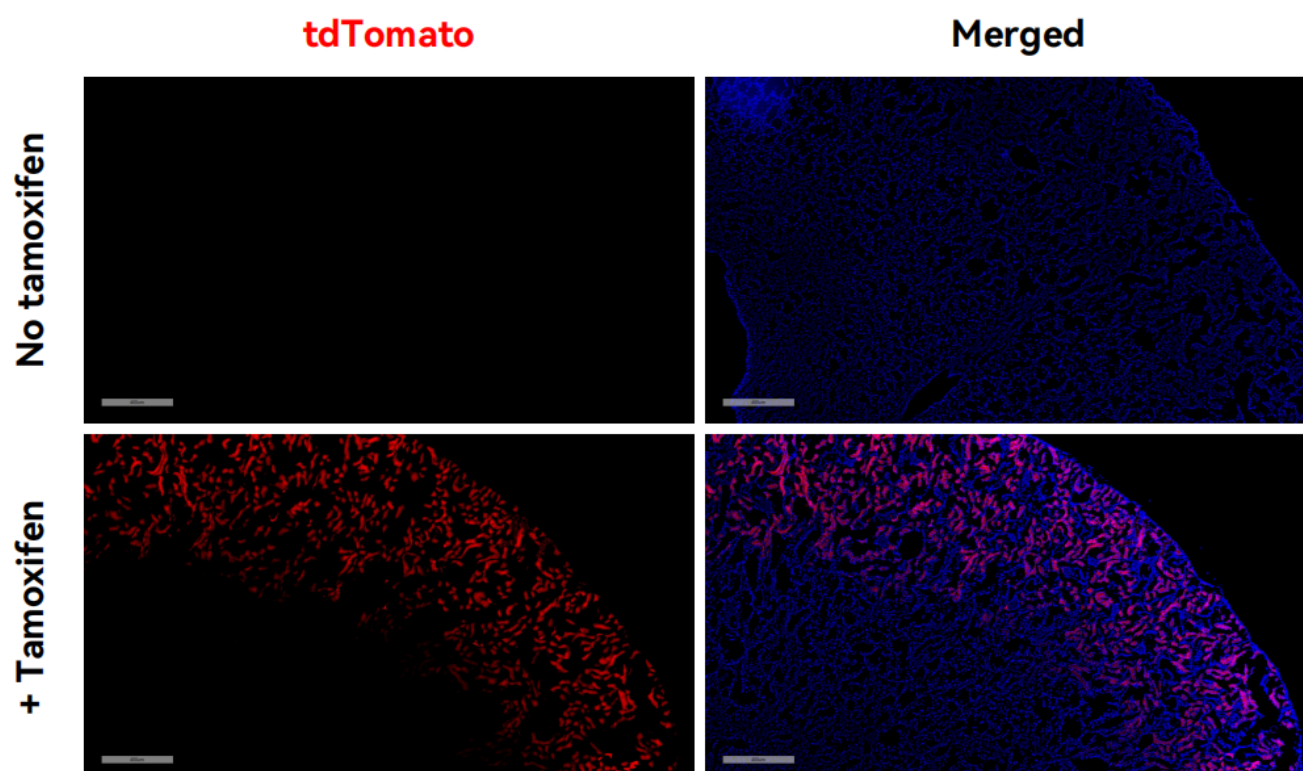


Fig2. CreERT2-mediated recombination in kidney of $Slc34a1^{CreERT2/+}$; $Rosa26^{tdTomato/+}$ mouse.

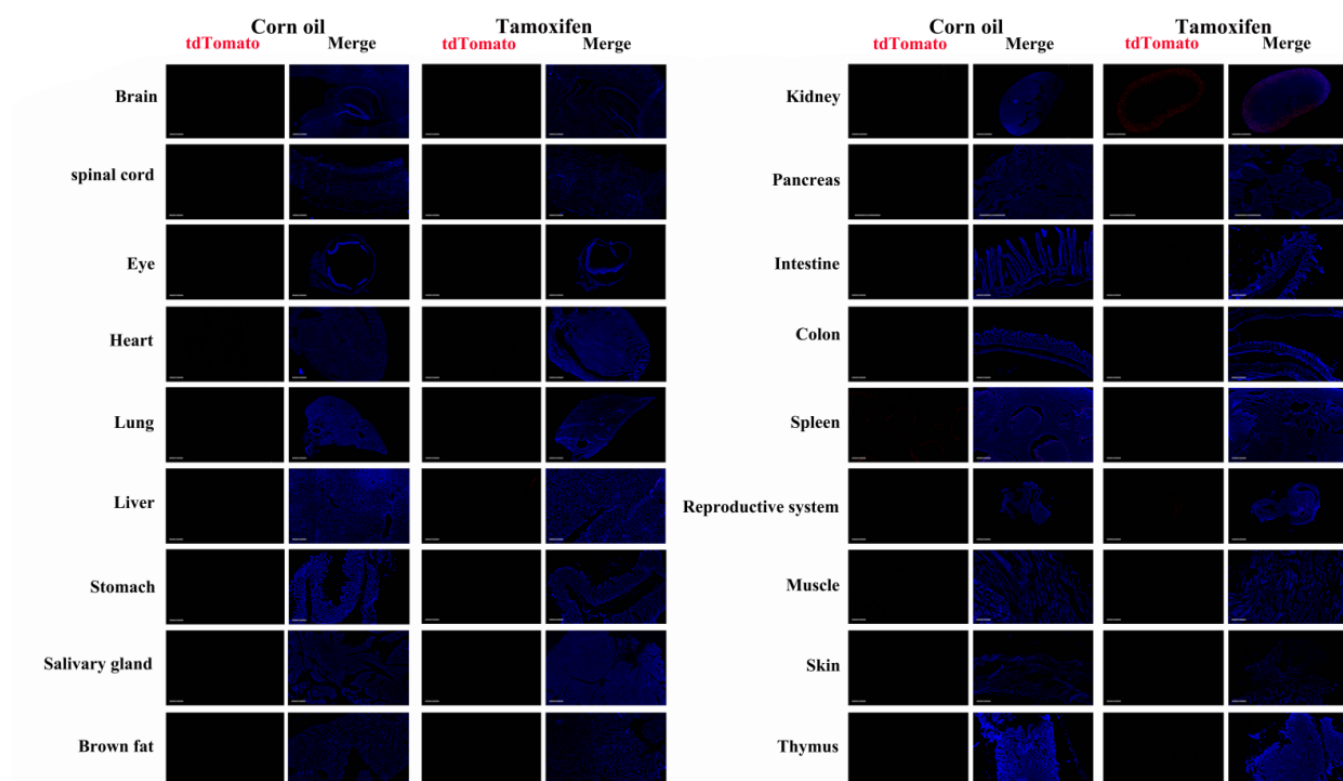


Fig3. Detection of tdTomato(red) in various tissues of $Slc34a1^{CreERT2/+}; Rosa26^{tdTomato/+}$ mice. (For more detailed information please contact our technical advisor.)