

# MC38-hMSLN

## Strain Information

Cat. NO.	NM-S13-TM53
Cell Line	MC38- <i>Igs2</i> <sup>em1(hMSLN)Smoc</sup>
Strain State	Validation of target gene expression completed
Model	A MSLN expression cassette was knocked into the H11 locus.
Description	*Literature published using this strain should indicate: MC38-hMSLN cell line (Cat. NO. NM-S13-TM53) was purchased from Shanghai Model Organisms Center, Inc..

## Validation Data

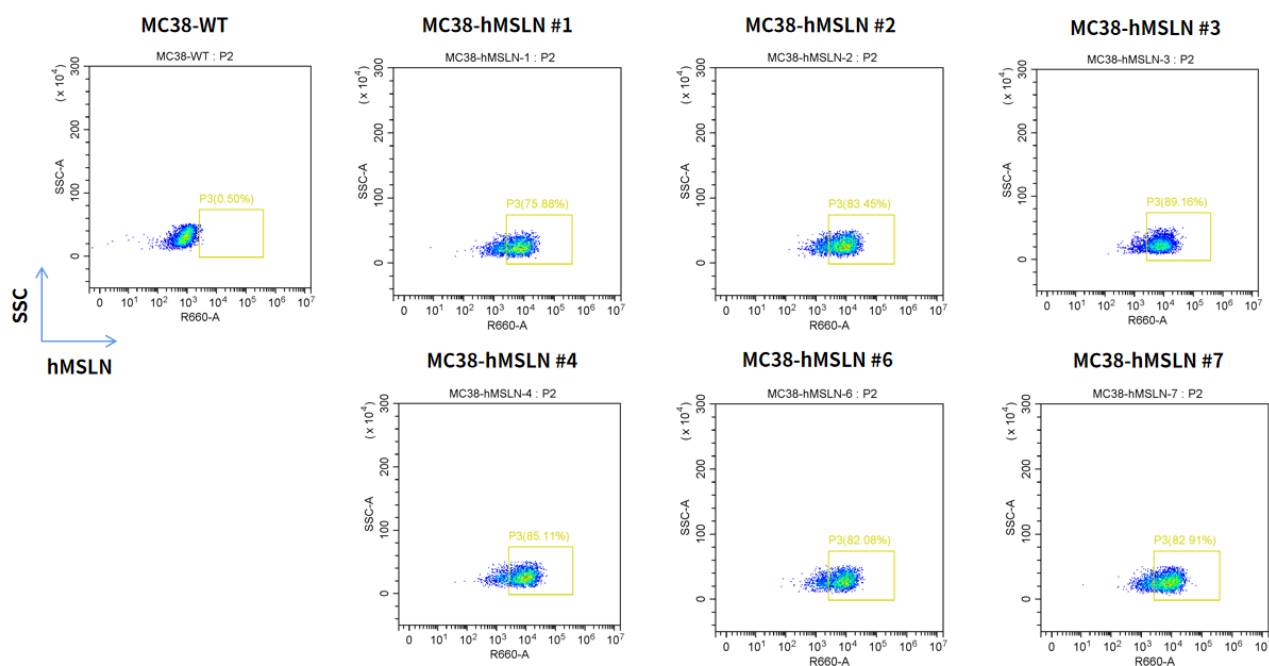


Fig1. hMSLN expression on *in vitro* cultured cells of MC38-hMSLN-Luc.

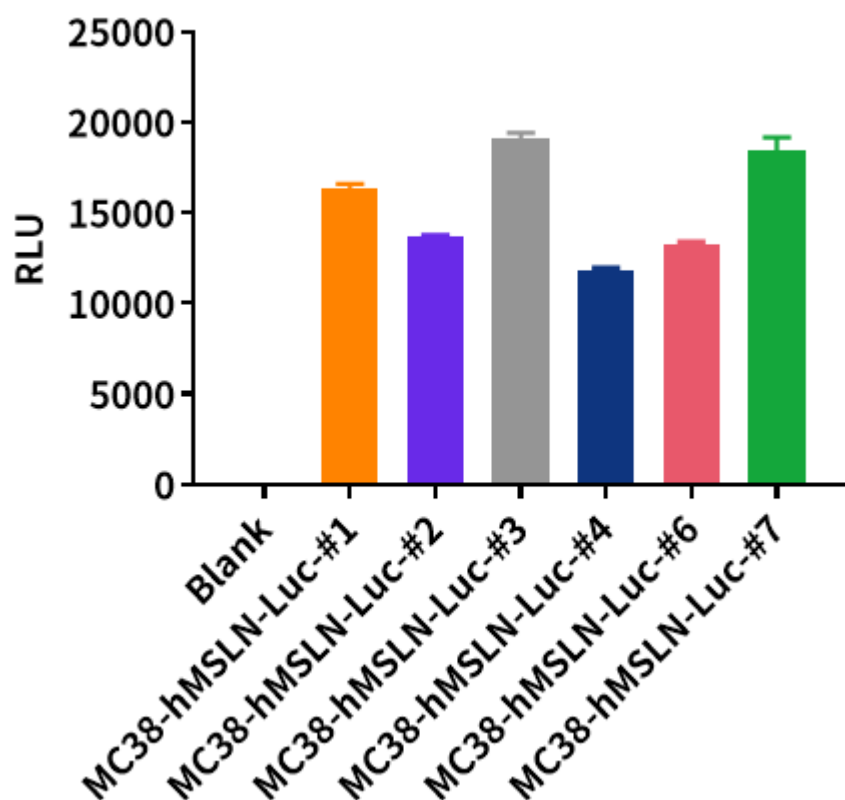


Fig2. Detection of luciferase activity in MC38-hMSLN-Luc cells *in vitro*.