

MC38-hTGFβ

Strain Information

Cat. NO.	NM-S13-TM63
Cell Line	MC38- <i>Igs2</i> ^{em1(hTGFβ)/Smoc}
Strain State	Validation of tumorigenic capacity completed
Model Description	A TGFβ expression cassette was knocked into the H11 locus. *Literature published using this strain should indicate: MC38-hTGFβ cell line (Cat. NO. NM-S13-TM63) was purchased from Shanghai Model Organisms Center, Inc..

Validation Data

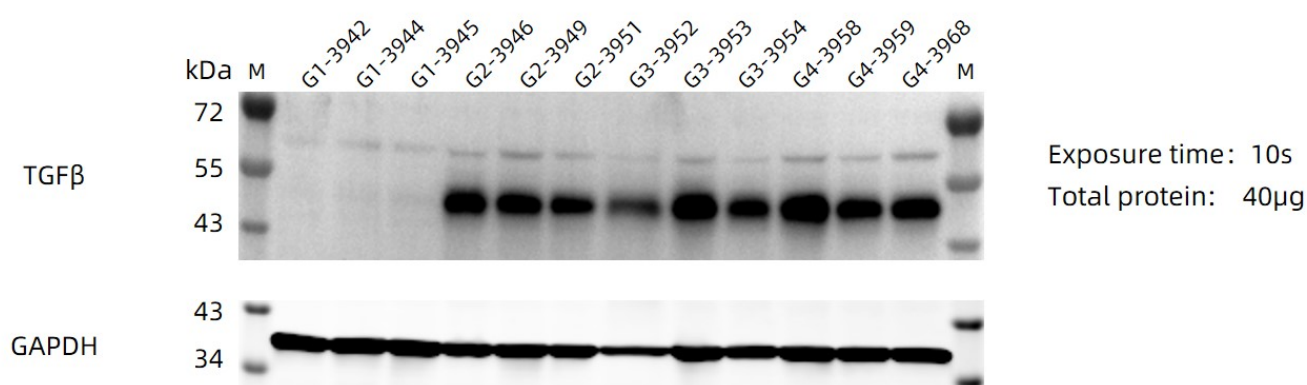


Figure 1. Western blot analysis of human TGFβ protein.

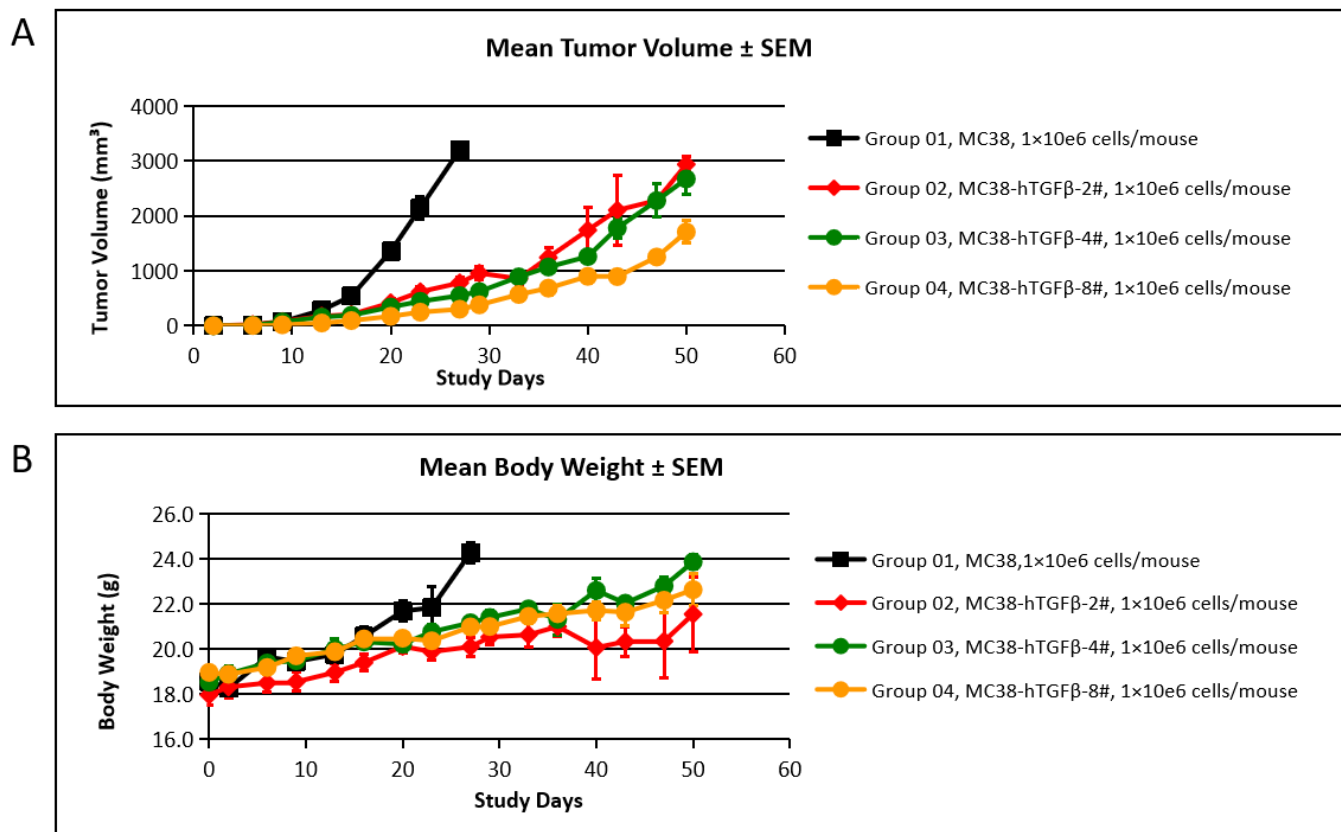


Figure 2. **Tumor growth curve(A) and body weight change(B).**

MC38-hTGF β cells and wild-type MC38 cells were implanted into C57BL/6 mice. As shown in panel A, MC38-hTGF β cells were able to establish tumors in vivo and can be used for efficacy studies.