

# Lgr5-2A-Dre

<b>Nomenclature</b>	C57BL/6Smoc- <i>Lgr5</i> <sup>em1(2A-Dre)Smoc</sup>
<b>Cat. NO.</b>	NM-KI-215042
<b>Strain State</b>	Repository Live

## Gene Summary

<b>Gene Symbol</b>	<b>Synonyms</b>	FEX, Gpr49
	<b>NCBI ID</b>	<a href="#">14160</a>
	<b>MGI ID</b>	<a href="#">1341817</a>
	<b>Ensembl ID</b>	<a href="#">ENSMUSG00000020140</a>

## Model Description

2A-Dre expression cassette was knocked into the *Lgr5* gene.

\*Literature published using this strain should indicate: *Lgr5*-2A-Dre mice (Cat. NO. NM-KI-215042) were purchased from Shanghai Model Organisms Center, Inc..

## Validation Data

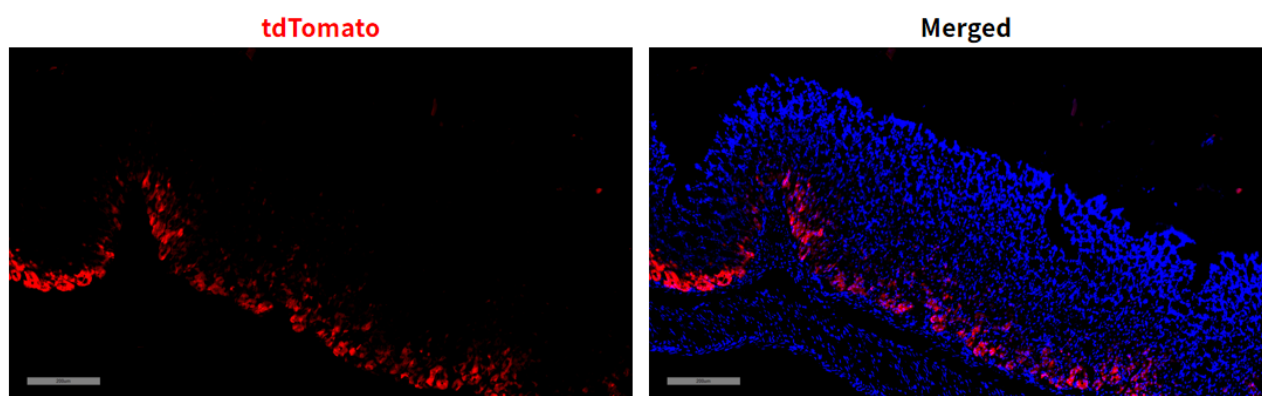


Fig 1. Dre-mediated recombination in stomach of *Lgr5*<sup>Dre/+</sup>; *Rosa26*<sup>tdTomato/+</sup> mice.

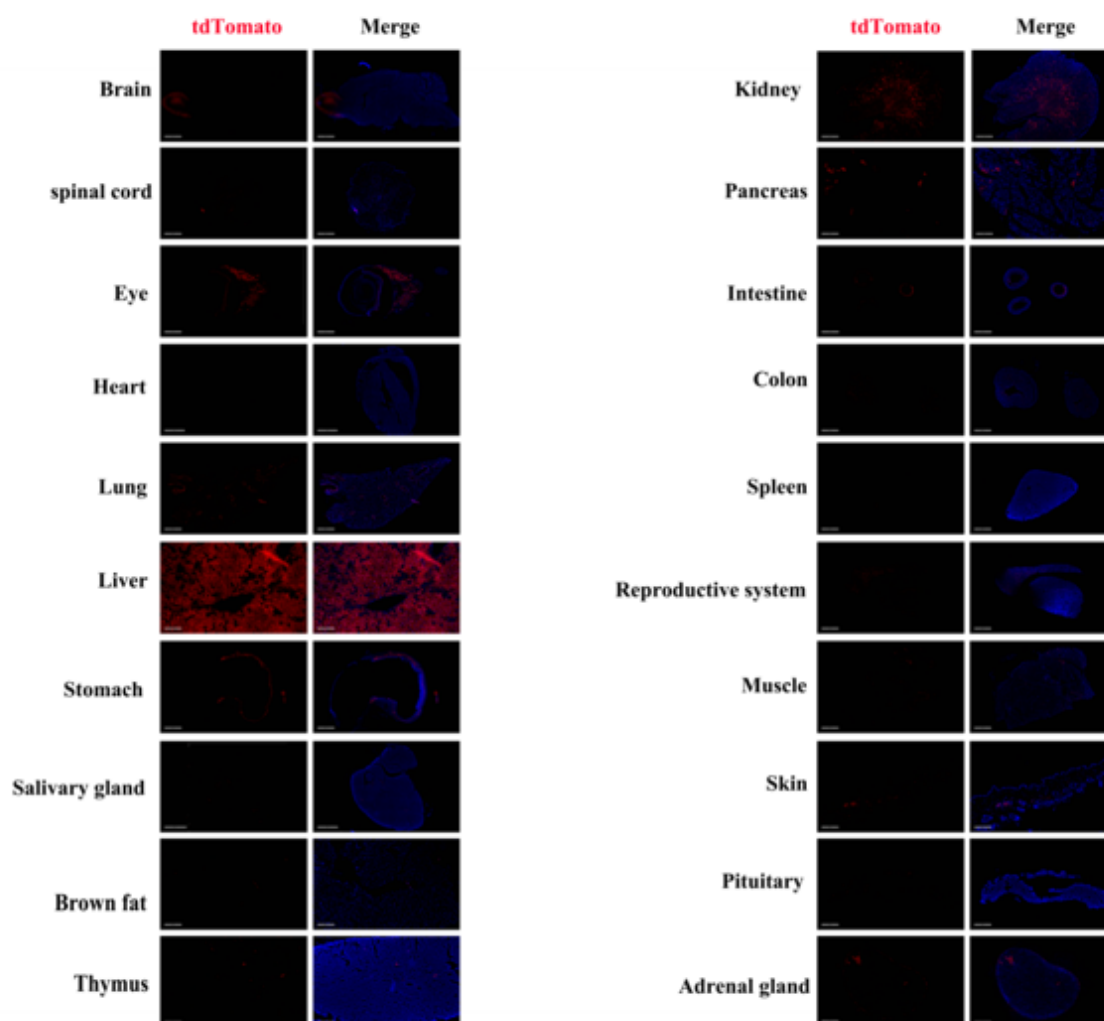


Fig 2. Detection of tdTomato (red) in various tissues of *Lgr5Dre/+; Rosa26tdTomato/+* mice. Expression tissues include: olfactory bulb, spinal cord, retina, lung, liver, stomach, kidney, small intestine, large intestine, epididymis, skin, pituitary gland. A few cells expressed in salivary gland, brown fat, thymus, pancreas, testis, muscle, adrenal gland. Tissues that unexpressed include heart. (8.5-week old, male) (For more detailed information please contact our technical advisor.)