

RPMI 8226-Luc

Strain Information

| | |
|--------------|---|
| Cat. NO. | NM-GS02-1 |
| Cell Line | RPMI 8226-Tg(Luc)Smoc |
| Strain State | Validation of tumorigenic capacity completed |
| Model | Luciferase-labeled human RPMI 8226 cell. |
| Description | *Literature published using this strain should indicate: RPMI 8226-Luc cell line (Cat. NO. NM-GS02-1) was purchased from Shanghai Model Organisms Center, Inc.. |

Validation Data

The RPMI 8226-Luc cell line is a RPMI 8226 wild-type cell line with stable and high expression of Luciferase. Luciferase activity was showed a steady increase in xenograft mouse models. This RPMI 8226-Luc cell line is available for in vivo imaging and assessment of novel therapeutic modalities.

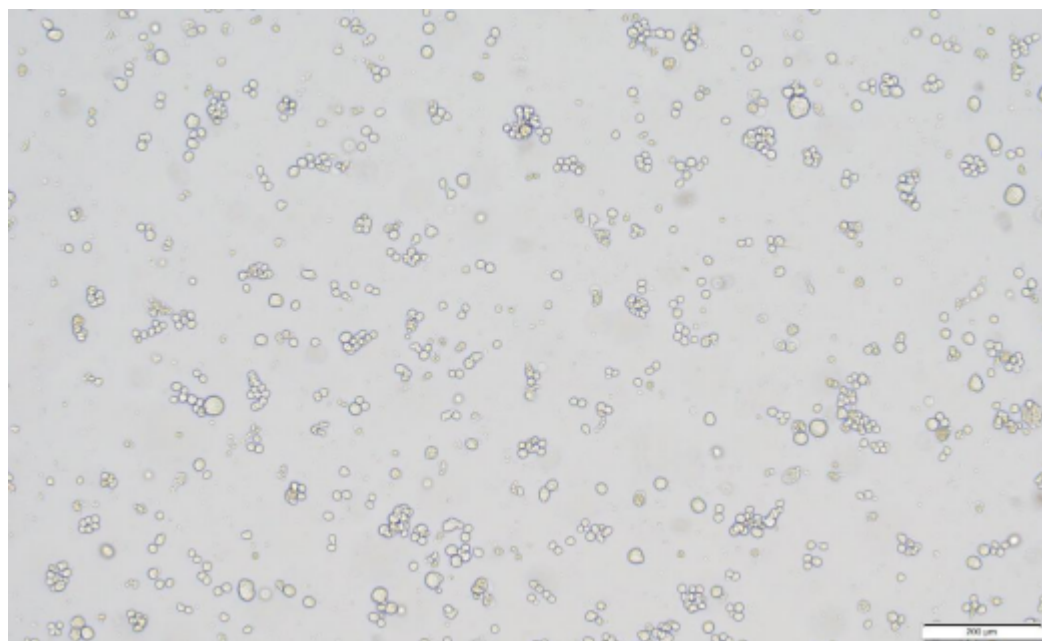


Figure 1. Morphology of RPMI 8226-Luc cell line.

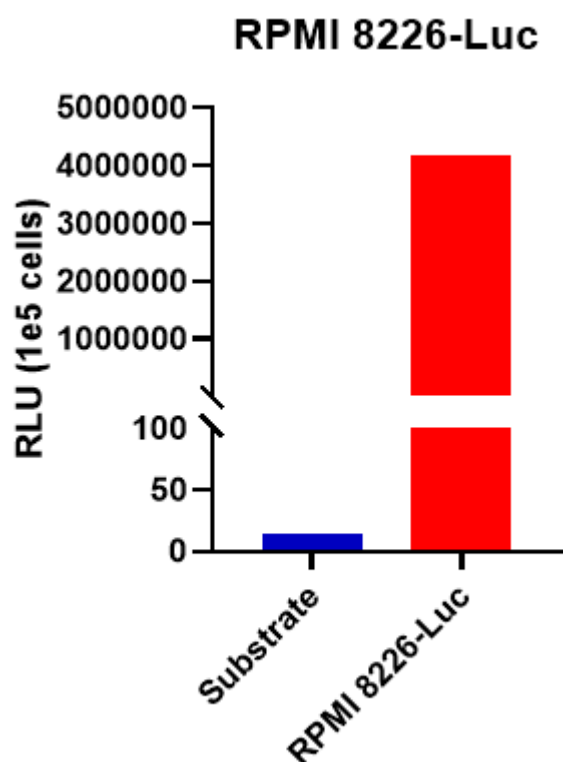


Figure 2. Luciferase activity assay of RPMI 8226-Luc cell line.

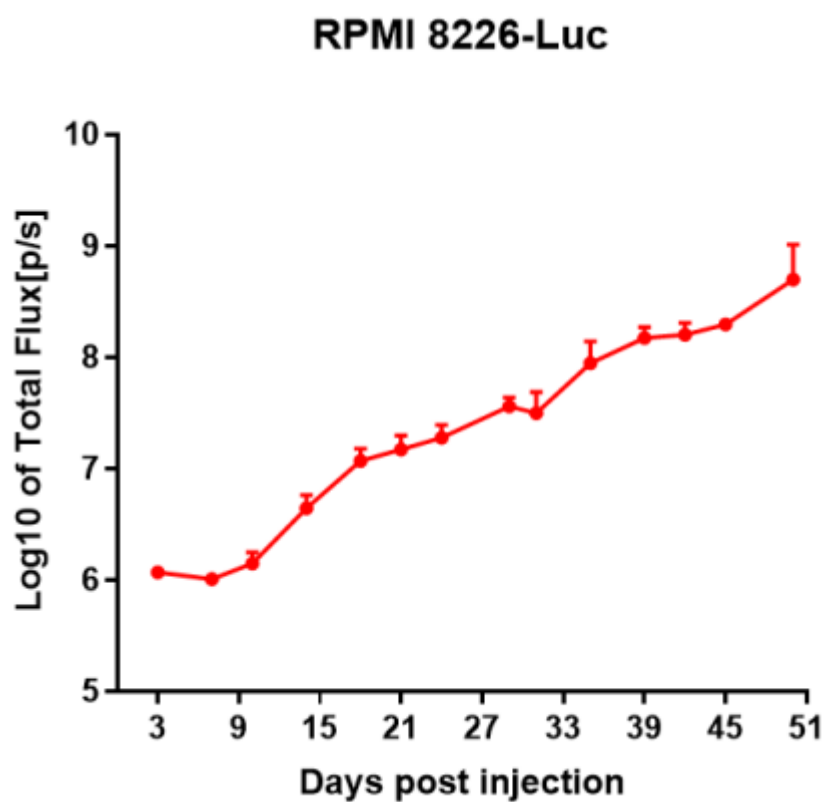


Figure 3. *In vivo* luciferase activity curves of RPMI 8226-Luc xenograft mouse models. (n=5)

RPMI 8226-Luc cells were injected into M-NSG mice through tail vein.

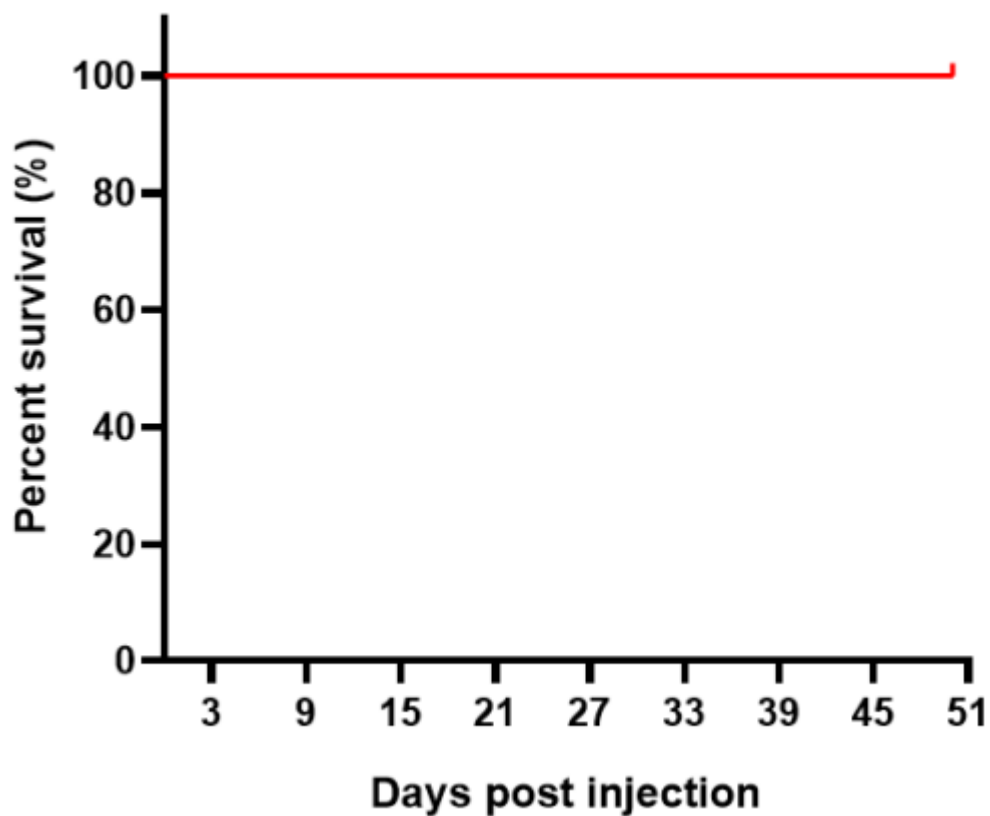


Figure 4. Survival curve of RPMI 8226-Luc xenograft mouse models. (n=5)

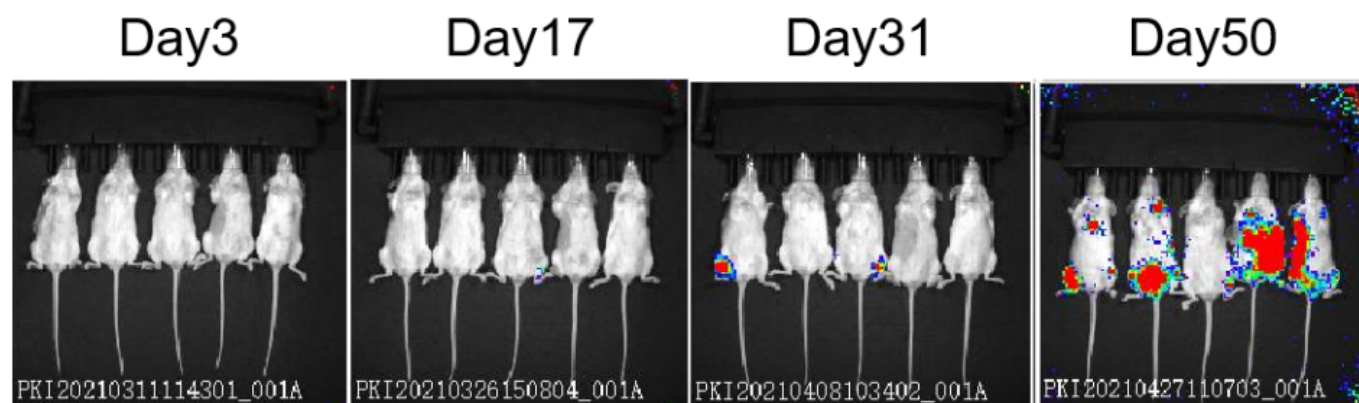


Figure 5. *In vivo* bioluminescence imaging of RPMI 8226-Luc xenograft mice.