

# B16F10-OVA

## Strain Information

Cat. NO.	NM-S31A-TG05
Cell Line	B16F10-Tg(OVA)Smoc
Strain State	Validation of tumorigenic capacity completed
Model Description	The B16F10-OVA cell line is a B16F10 cell line with stable and high expression of OVA.
	*Literature published using this strain should indicate: B16F10-OVA cell line (Cat. NO. NM-S31A-TG05) was purchased from Shanghai Model Organisms Center, Inc..

## Validation Data

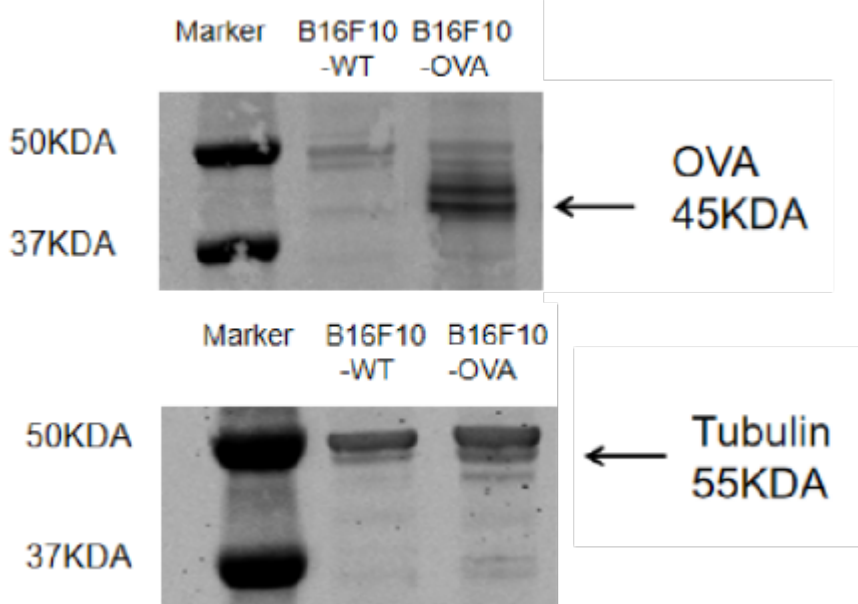


Figure 1. OVA expression in wild-type B16F10 and B16F10-OVA-Luc cell lines.

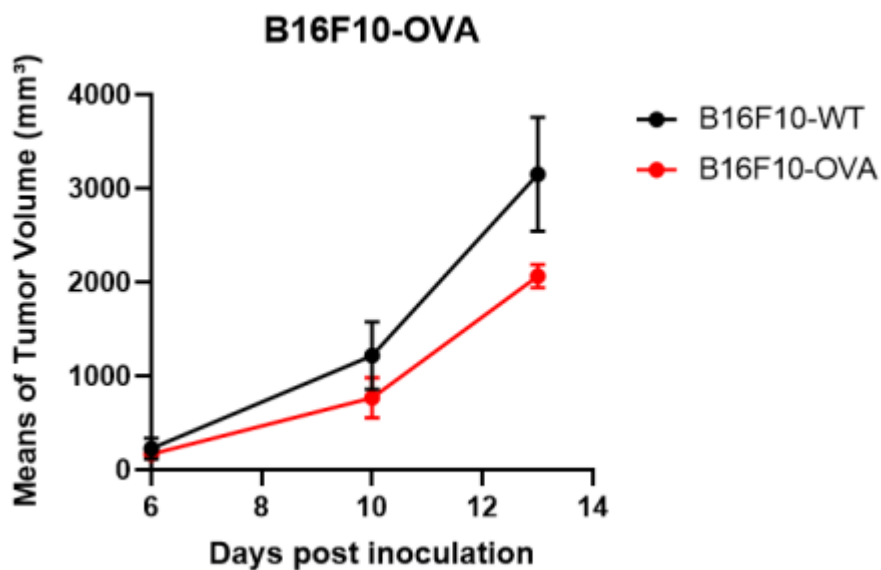


Figure 2. Tumor growth curve of B16F10 and B16F10-OVA-Luc syngeneic model (n=5).

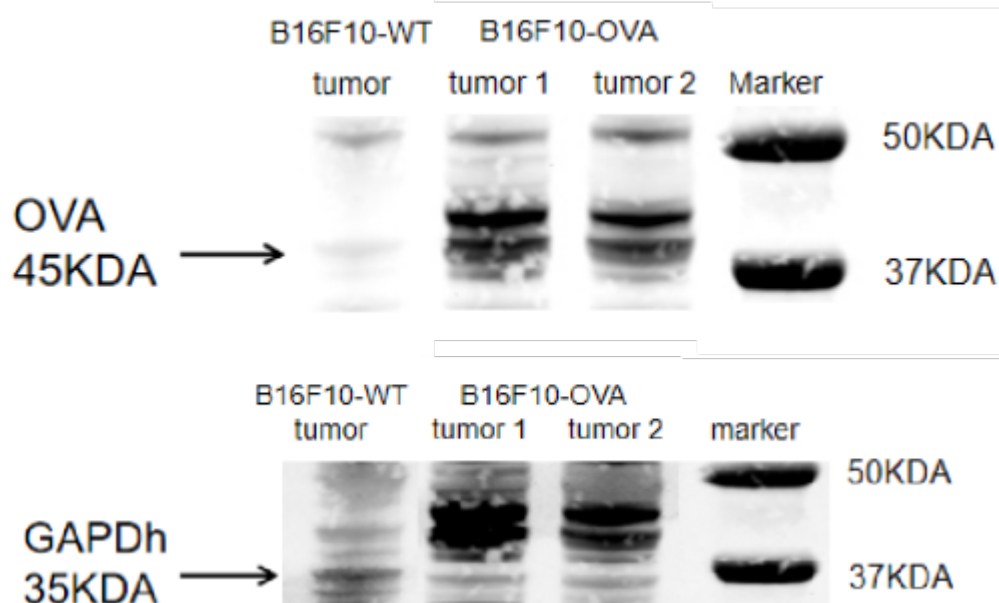


Figure 3. The expression of OVA in tumors by Western Blot.