

# SK-MES-1

## Strain Information

Cat. NO.	NM-F02
Cell Line	SK-MES-1
Strain State	Validation of tumorigenic capacity completed
Model Description	SK-MES-1 cell line was established in 1970 from a metastatic site (pleural effusion) in a 65-year-old Caucasian male with squamous cell carcinoma of the lung.  *Literature published using this strain should indicate: SK-MES-1 cell line (Cat. NO. NM-F02) was purchased from Shanghai Model Organisms Center, Inc..

---

## Validation Data

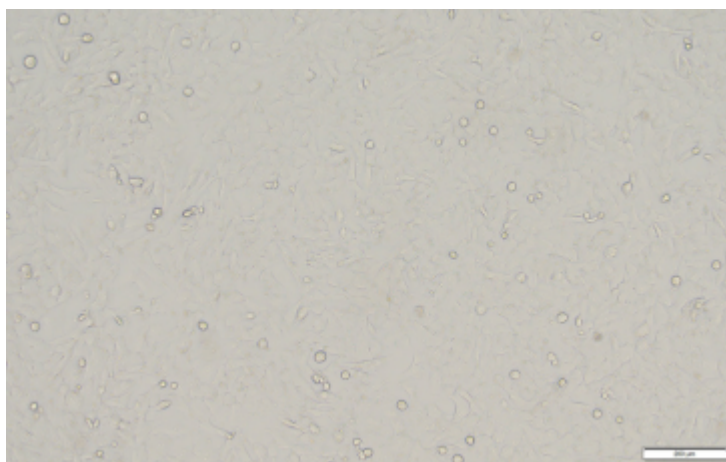
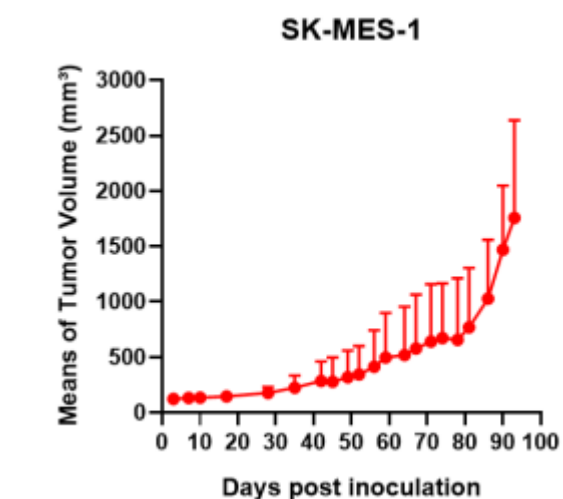
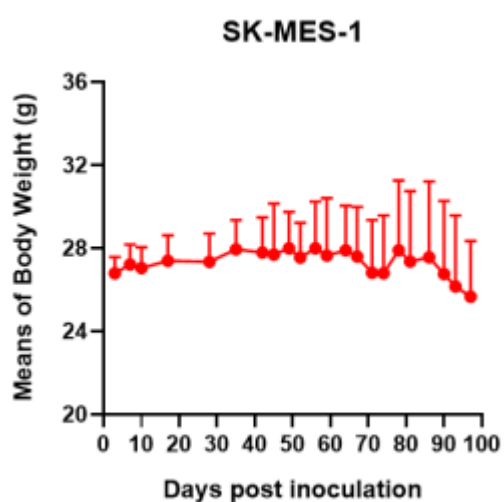


Fig1. Morphology of SK-MES-1 cell line.



A



B

Fig2. Analysis of Tumorigenesis in M-NSG mice (n=2) . A Tumor volume was measured by time. B Body weight was simultaneously checked.

\*Wild-type cell lines are not for sale, and only applied to construction of tumor bearing mice and in-vivo efficacy studies.