

SNU-16

Strain Information

Cat. NO.	NM-W05
Cell Line	SNU-16
Strain State	Validation of tumorigenic capacity completed
Model Description	<p>SNU-16 is a cell line exhibiting epithelial morphology that was isolated in 1987 from ascites derived from a 33-year-old, female, Asian, stomach cancer patient prior to chemotherapy.</p> <p>*Literature published using this strain should indicate: SNU-16 cell line (Cat. NO. NM-W05) was purchased from Shanghai Model Organisms Center, Inc..</p>

Validation Data

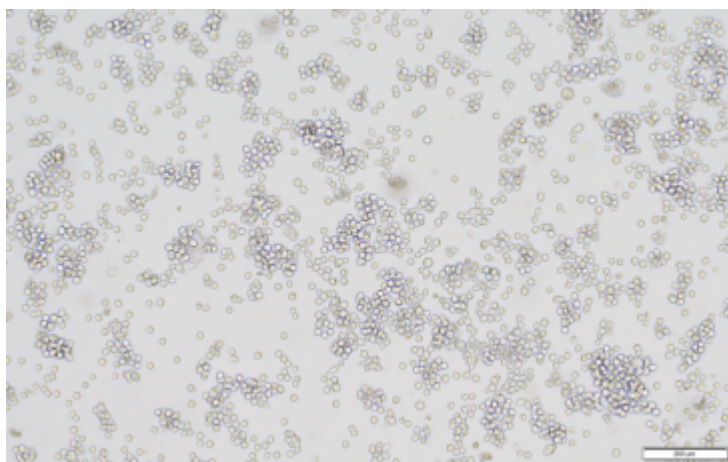


Fig1. Morphology of SNU-16 cell line.

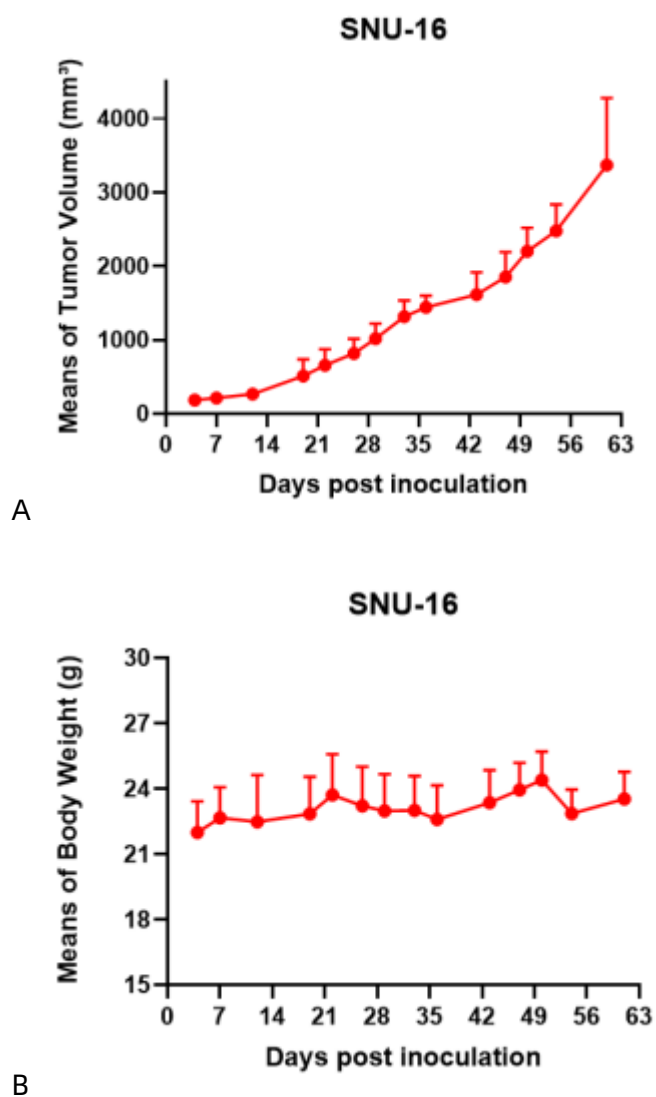
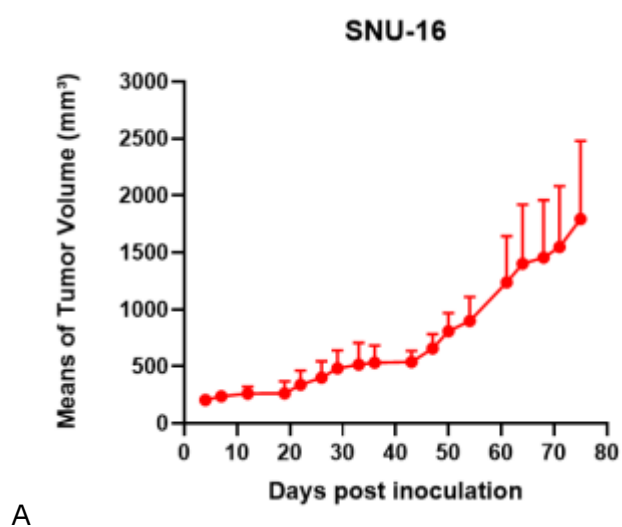
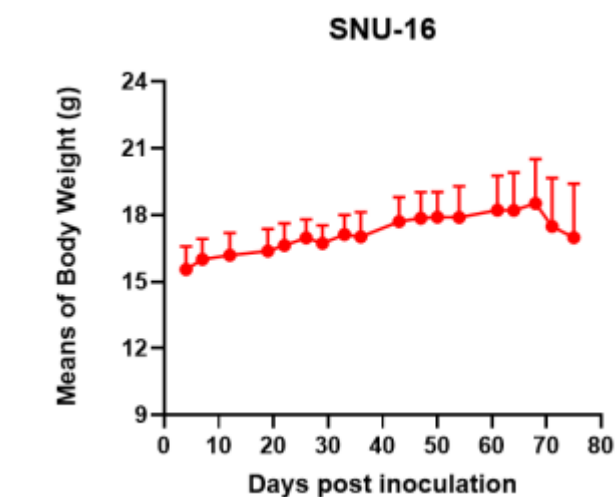


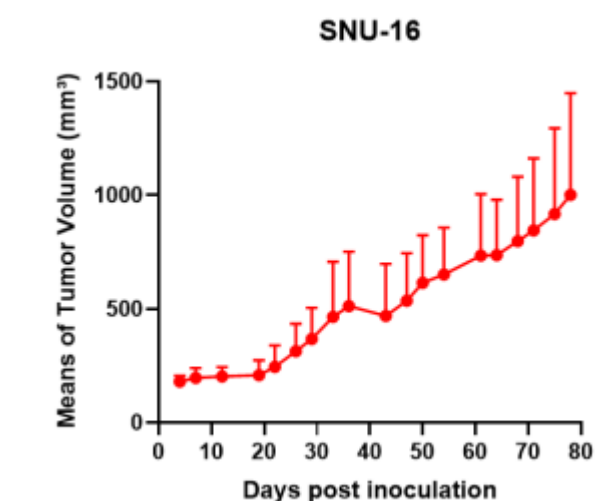
Fig2. Analysis of Tumorigenesis in M-NSG mice (n=6) . A Tumor volume was measured by time. B Body weight was simultaneously checked.



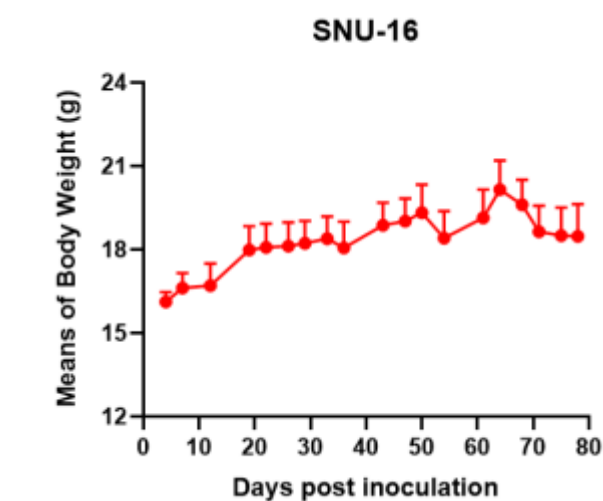


B

Fig3. Analysis of Tumorigenesis in CB-17 SCID mice (n=6) . A Tumor volume was measured by time. B Body weight was simultaneously checked.



A



B

Fig4. Analysis of Tumorigenesis in Balb/c nude mice (n=6) . A Tumor volume was measured by time. B Body weight was simultaneously checked.

*Wild-type cell lines are not for sale, and only applied to construction of tumor bearing mice and in-vivo efficacy studies.
