

AGS

Strain Information

Cat. NO.	NM-W01
Cell Line	AGS
Strain State	Validation of tumorigenic capacity completed
Model Description	<p>The AGS cell line was initially established in 1979 from the stomach tissue of a 54-year-old Caucasian female who suffered from gastric adenocarcinoma (stomach cancer).</p> <p>*Literature published using this strain should indicate: AGS cell line (Cat. NO. NM-W01) was purchased from Shanghai Model Organisms Center, Inc..</p>

Validation Data

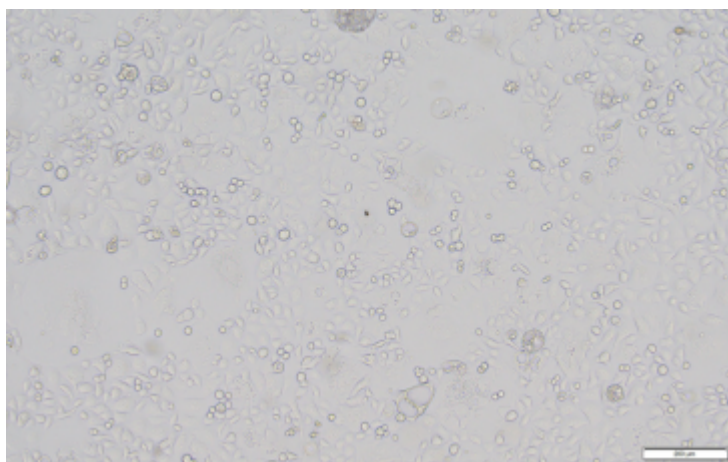
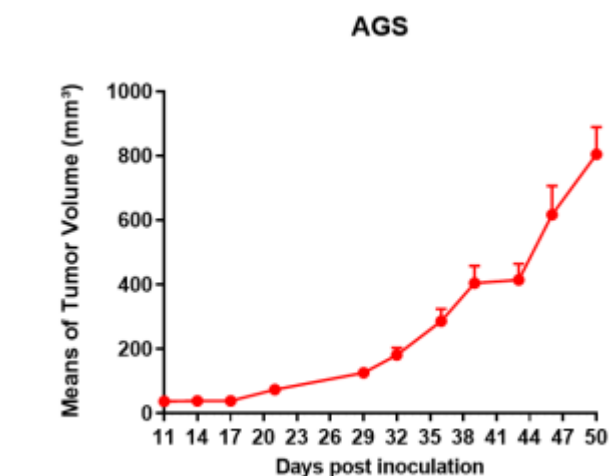
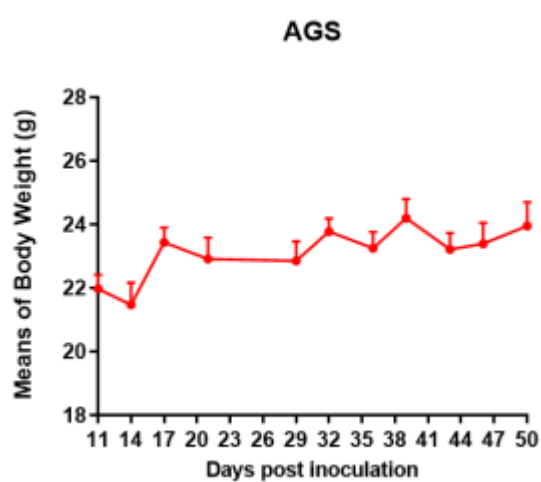


Fig1. Morphology of AGS cell line.



A



B

Fig2. Analysis of Tumorigenesis in M-NSG mice (n=5) . a Tumor volume was measured by time. b Body weight was simultaneously checked.

*Wild-type cell lines are not for sale, and only applied to construction of tumor bearing mice and in-vivo efficacy studies.