

# NCI-N87 [N87]

## Strain Information

Cat. NO.	NM-W02
Cell Line	NCI-N87 [N87]
Strain State	Validation of tumorigenic capacity completed
Model Description	NCI-N87 is a cell line exhibiting epithelial morphology that was isolated in 1976 from the stomach of a male gastric carcinoma patient.  *Literature published using this strain should indicate: NCI-N87 [N87] cell line (Cat. NO. NM-W02) was purchased from Shanghai Model Organisms Center, Inc..

## Validation Data

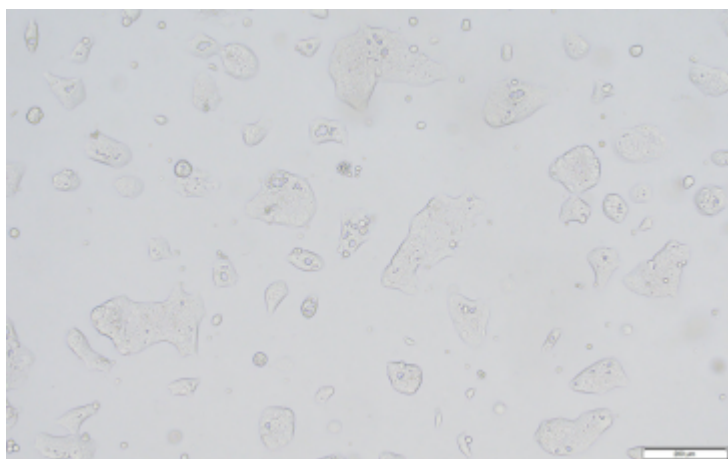


Fig1. Morphology of NCI-N87 cell line.

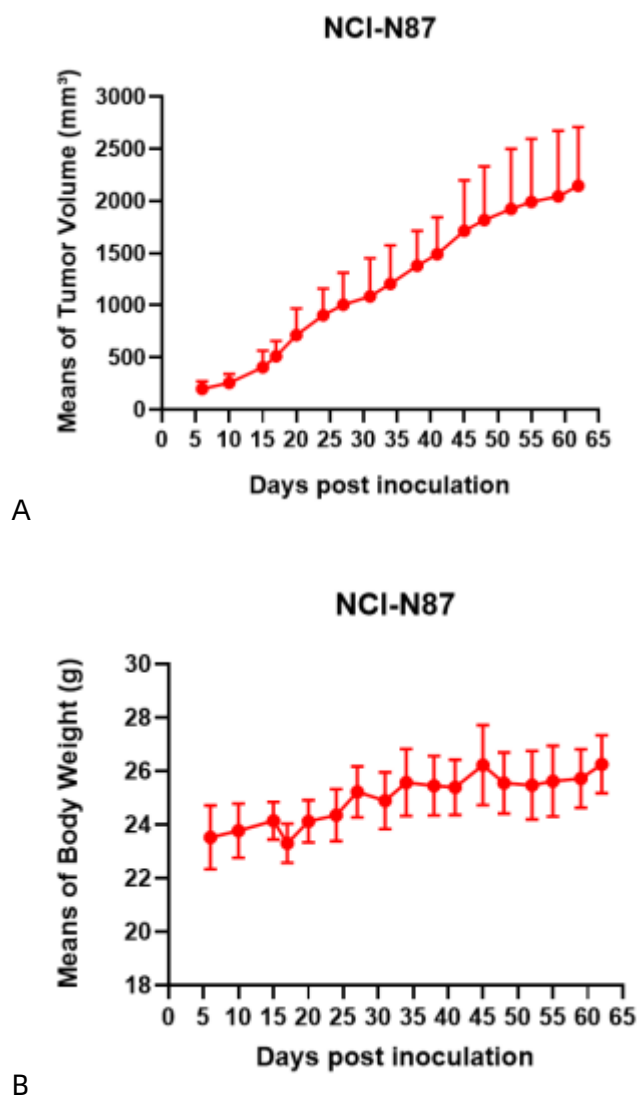


Fig2. Analysis of Tumorigenesis in M-NSG mice (n=4) . A Tumor volume was measured by time. B Body weight was simultaneously checked.

\*Wild-type cell lines are not for sale, and only applied to construction of tumor bearing mice and in-vivo efficacy studies.