

# A2780

## Strain Information

Cat. NO.	NM-RC02
Cell Line	A2780
Strain State	Validation of tumorigenic capacity completed
Model Description	<p>The A2780 human ovarian cancer cell line was established from tumor tissue from an untreated patient with ovarian endometroid adenocarcinoma.</p> <p>*Literature published using this strain should indicate: A2780 cell line (Cat. NO. NM-RC02) was purchased from Shanghai Model Organisms Center, Inc..</p>

## Validation Data

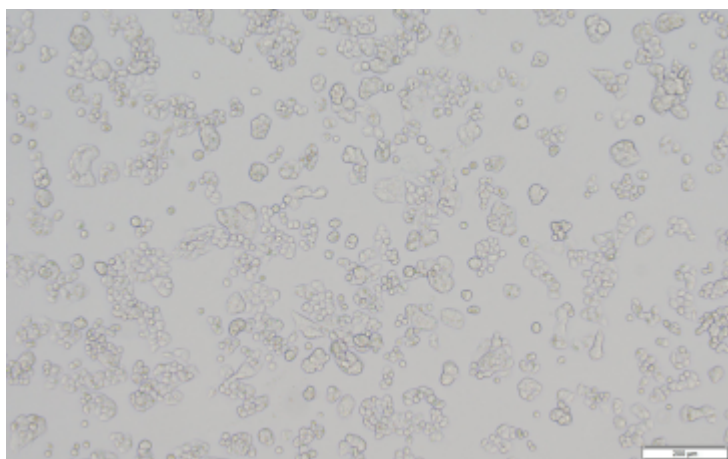
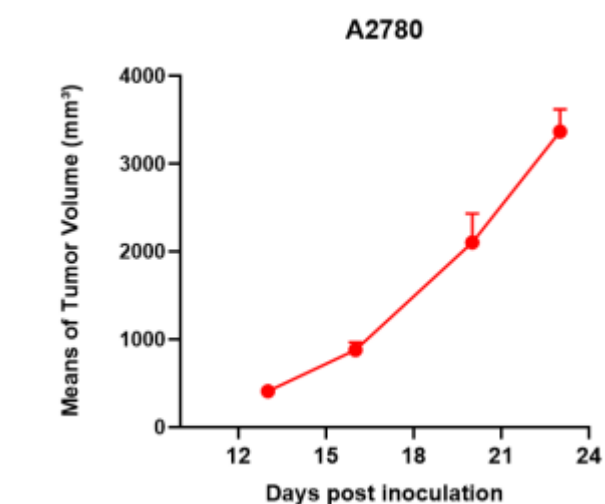
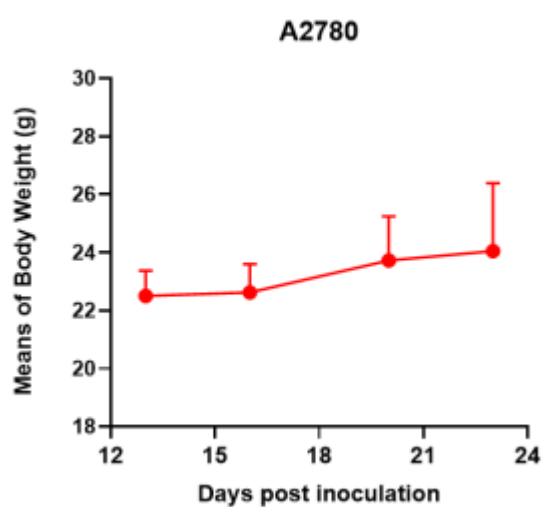


Fig1. Morphology of A2780 cell line.



A



B

Fig2. Analysis of Tumorigenesis in M-NSG mice (n=4) . a Tumor volume was measured by time. b Body weight was simultaneously checked.

\*Wild-type cell lines are not for sale, and only applied to construction of tumor bearing mice and in-vivo efficacy studies.