

# K562

## Strain Information

Cat. NO.	NM-B05
Cell Line	K562
Strain State	Validation of tumorigenic capacity completed
Model Description	K-562 cells are lymphoblasts isolated from the bone marrow of a 53-year-old chronic myelogenous leukemia patient.  *Literature published using this strain should indicate: K562 cell line (Cat. NO. NM-B05) was purchased from Shanghai Model Organisms Center, Inc..

## Validation Data

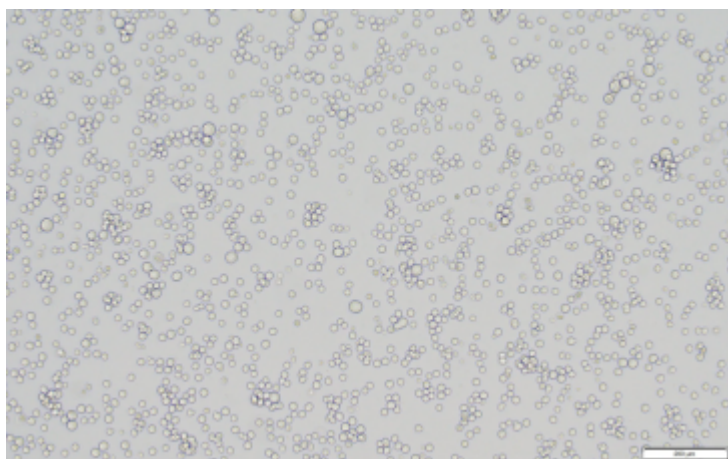
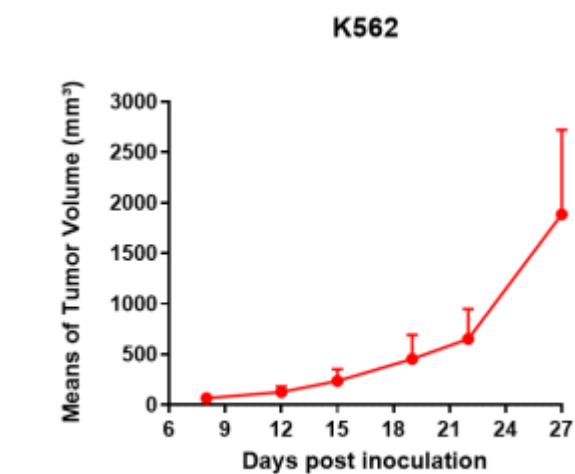
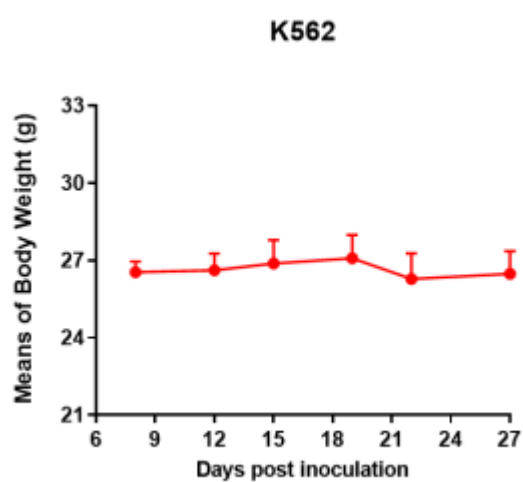


Fig1. Morphology of K562 cell line.



A



B

Fig2. Analysis of Tumorigenesis in M-NSG mice (n=5) . K562 cells were subcutaneously inoculated in M-NSG mice. a Tumor volume was measured by time. b Body weight was simultaneously checked.

\*Wild-type cell lines are not for sale, and only applied to construction of tumor bearing mice and in-vivo efficacy studies.