

SK-MEL-28

Strain Information

Cat. NO.	NM-KH05
Cell Line	SK-MEL-28
Strain State	Validation of tumorigenic capacity completed
Model	Human malignant melanoma cell line
Description	*Literature published using this strain should indicate: SK-MEL-28 cell line (Cat. NO. NM-KH05) was purchased from Shanghai Model Organisms Center, Inc..

Validation Data

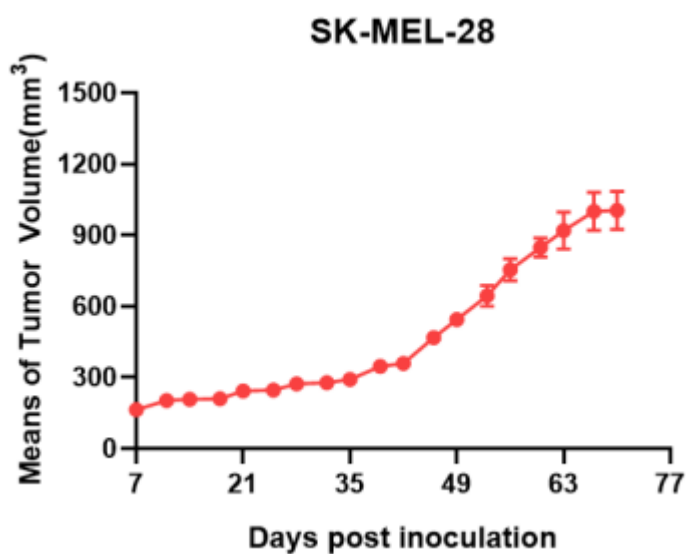


Fig1. Tumor growth curve of SK-MEL-28 xenograft model (n=4)

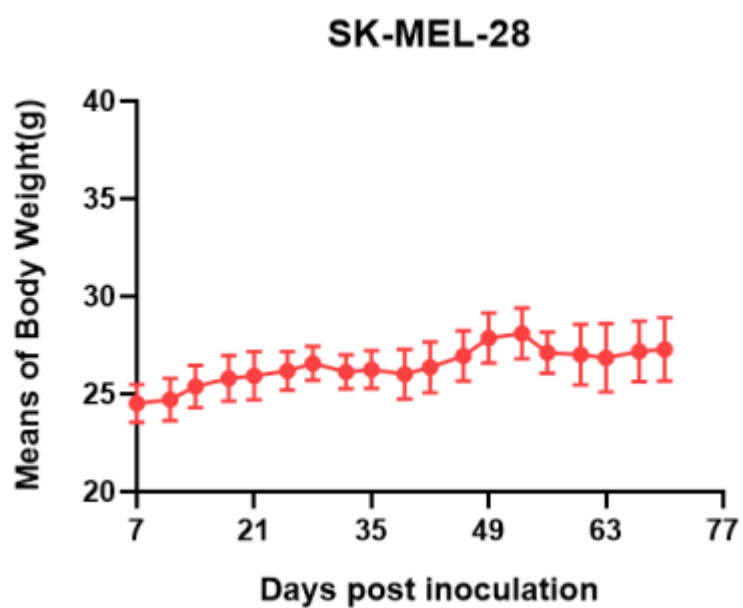


Fig2. Body weight change of SK-MEL-28 xenograft model (n=4)

*Wild-type cell lines are not for sale, and only applied to construction of tumor bearing mice and in-vivo efficacy studies.