

# SW480 [SW-480]

## Strain Information

Cat. NO.	NM-J01
Cell Line	SW480 [SW-480]
Strain State	Validation of tumorigenic capacity completed
Model Description	SW480 cells was isolated from the large intestine of a male Dukes B colorectal cancer patient.  *Literature published using this strain should indicate: SW480 [SW-480] cell line (Cat. NO. NM-J01) was purchased from Shanghai Model Organisms Center, Inc..

## Validation Data

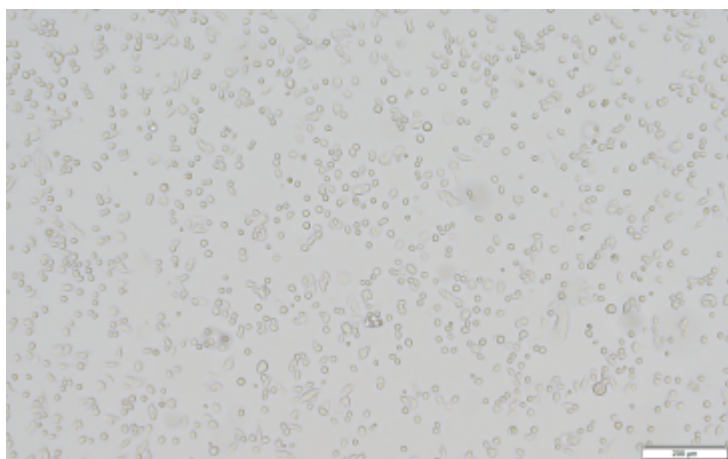
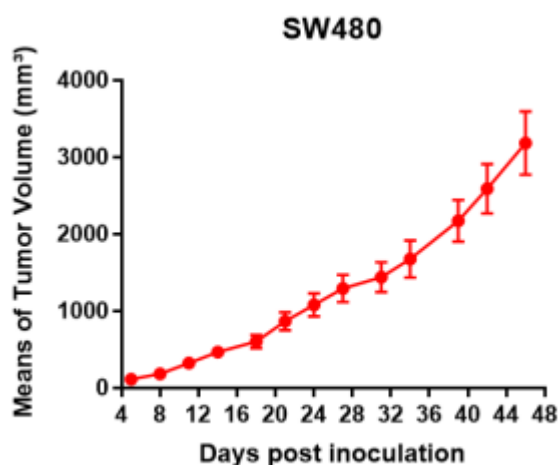
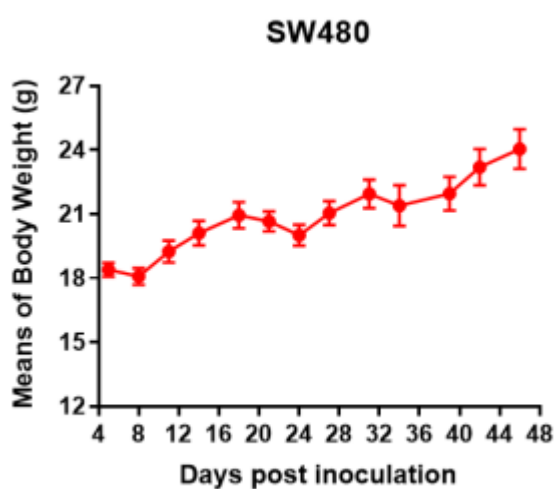


Fig1. Morphology of SW480 cell line.



A



B

Fig2. Analysis of Tumorigenesis in M-NSG mice (n=5) . A Tumor volume was measured by time. B Body weight was simultaneously checked.

\*Wild-type cell lines are not for sale, and only applied to construction of tumor bearing mice and in-vivo efficacy studies.