

MIA PaCa-2

Strain Information

Cat. NO.	NM-Y02
Cell Line	MIA PaCa-2
Strain State	Validation of tumorigenic capacity completed
Model Description	MIA PaCa-2 is an epithelial cell line that was derived from tumor tissue of the pancreas obtained from a 65-year-old, White male. *Literature published using this strain should indicate: MIA PaCa-2 cell line (Cat. NO. NM-Y02) was purchased from Shanghai Model Organisms Center, Inc..

Validation Data

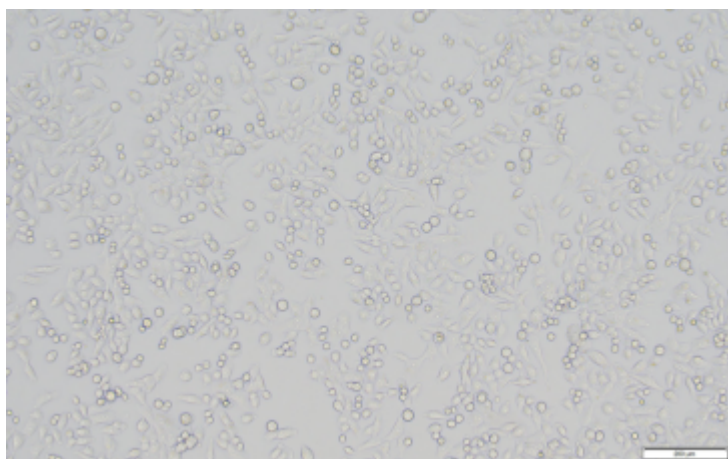
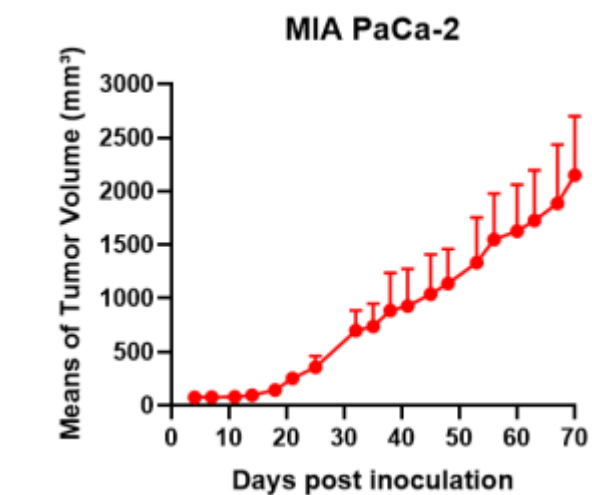
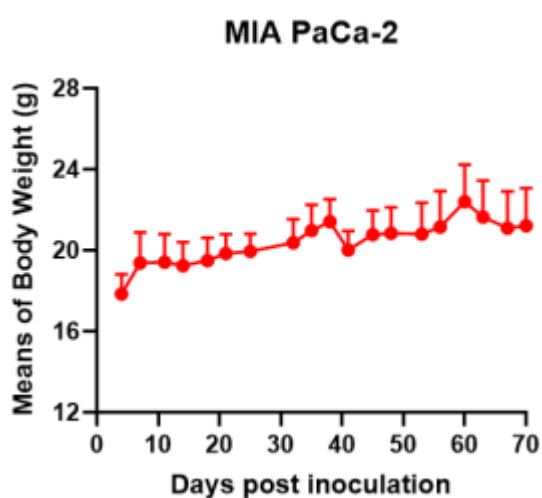


Fig1. Morphology of MIA PaCa-2 cell line.

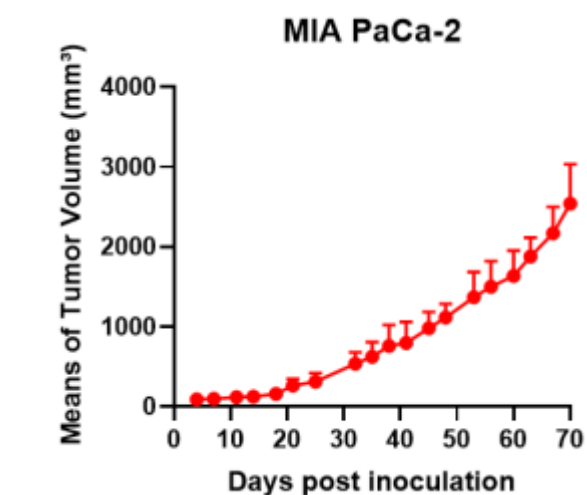


A

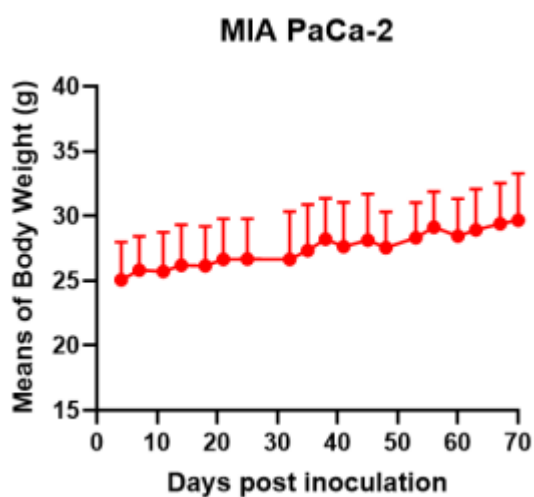


B

Fig2. Analysis of Tumorigenesis in Balb/c nude mice (n=4) . A Tumor volume was measured by time. B Body weight was simultaneously checked.



A



B

Fig3. Analysis of Tumorigenesis in M-NSG mice (n=2) . A Tumor volume was measured by time. B Body weight was simultaneously checked.

*Wild-type cell lines are not for sale, and only applied to construction of tumor bearing mice and in-vivo efficacy studies.