

# Capan-1

## Strain Information

Cat. NO.	NM-Y03
Cell Line	Capan-1
Strain State	Validation of tumorigenic capacity completed
Model Description	<p>Capan-1 is a cell line with epithelial morphology that was isolated from the pancreas of a 40-year-old, White, male with pancreatic adenocarcinoma.</p> <p>*Literature published using this strain should indicate: Capan-1 cell line (Cat. NO. NM-Y03) was purchased from Shanghai Model Organisms Center, Inc..</p>

## Validation Data

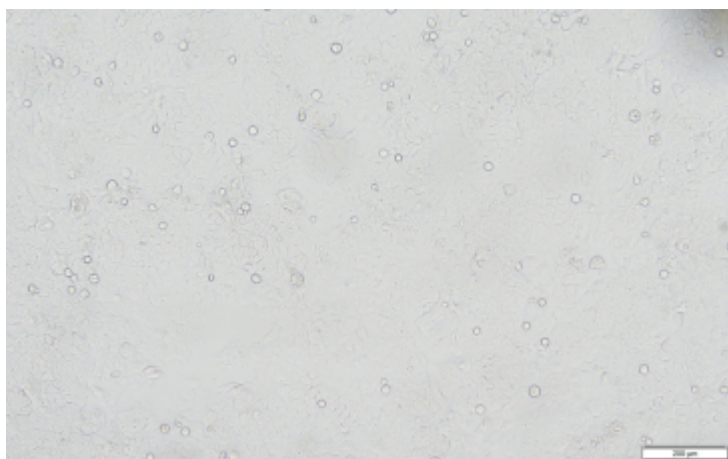
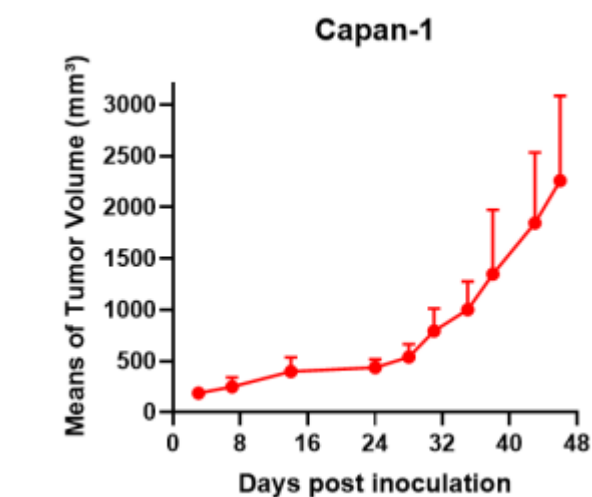
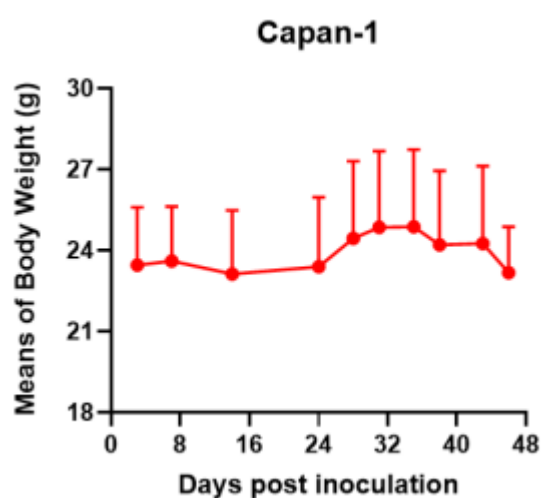


Fig1. Morphology of Capan-1 cell line.



A



B

Fig2. Analysis of Tumorigenesis in M-NSG mice (n=4) . a Tumor volume was measured by time. b Body weight was simultaneously checked.

\*Wild-type cell lines are not for sale, and only applied to construction of tumor bearing mice and in-vivo efficacy studies.