

# Caki-1

## Strain Information

Cat. NO.	NM-SA02
Cell Line	Caki-1
Strain State	Validation of tumorigenic capacity completed
Model	Human renal clear carcinoma cell line
Description	*Literature published using this strain should indicate: Caki-1 cell line (Cat. NO. NM-SA02) was purchased from Shanghai Model Organisms Center, Inc..

## Validation Data

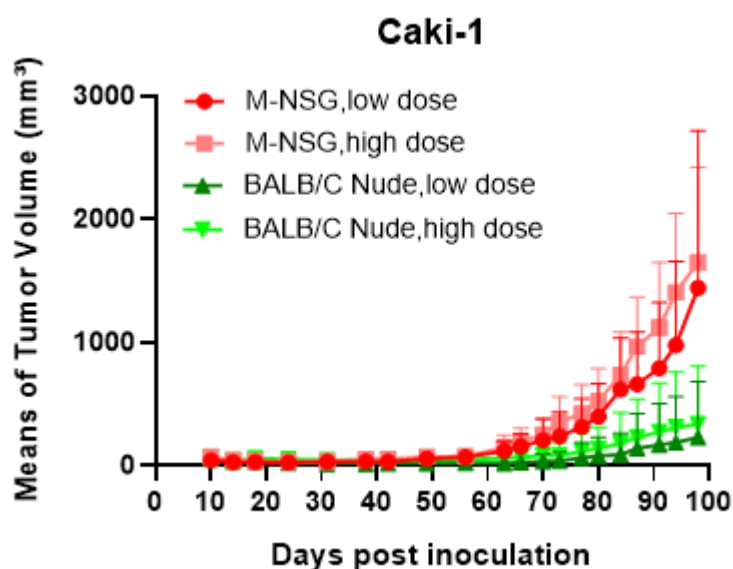


Fig1. Tumor growth curve of Caki-1 xenograft model (n=4~5)

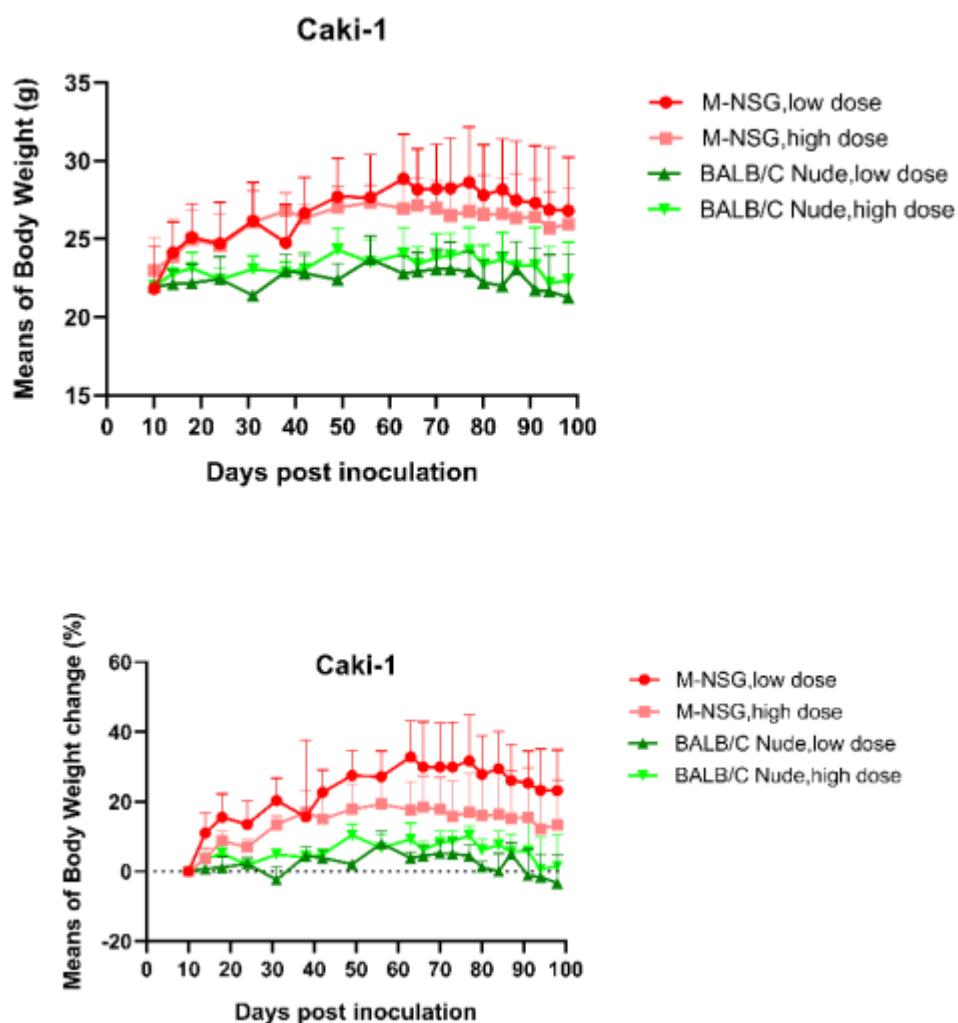


Fig2. Body weight change of Caki-1 xenograft model (n=4~5)

\*Wild-type cell lines are not for sale, and only applied to construction of tumor bearing mice and in-vivo efficacy studies.