

H22

Strain Information

Cat. NO.	NM-GA01
Cell Line	H22
Strain State	Validation of tumorigenic capacity completed
Model	H22 is a mouse hepatocellular carcinoma (HCC) cell line.
Description	*Literature published using this strain should indicate: H22 cell line (Cat. NO. NM-GA01) was purchased from Shanghai Model Organisms Center, Inc..

Validation Data

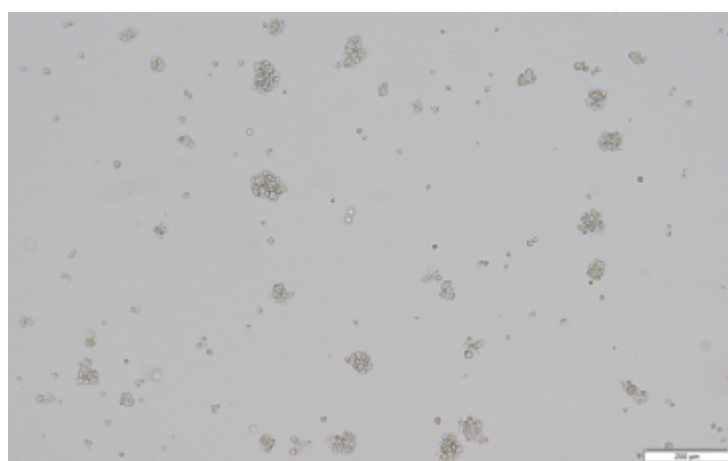
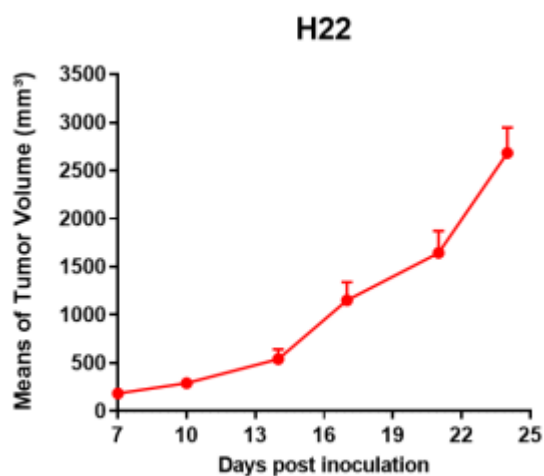
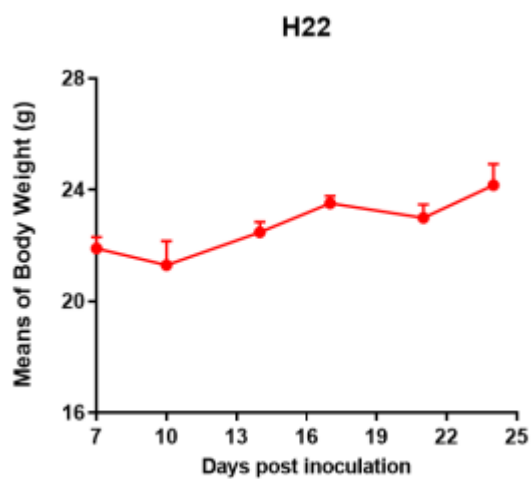


Fig1. Morphology of H22 cell line.



A



B

Fig2. Analysis of Tumorigenesis in Balb/c mice (n=5) . a Tumor volume was measured by time.
b Body weight was simultaneously checked.

*Wild-type cell lines are not for sale, and only applied to construction of tumor bearing mice and in-vivo efficacy studies.