

# MC38

## Strain Information

Cat. NO.	NM-S13
Cell Line	MC38
Strain State	Validation of tumorigenic capacity completed
Model	MC38 is a murine colon adenocarcinoma cell line from a C57BL/6 mouse.
Description	*Literature published using this strain should indicate: MC38 cell line (Cat. NO. NM-S13) was purchased from Shanghai Model Organisms Center, Inc..

## Validation Data

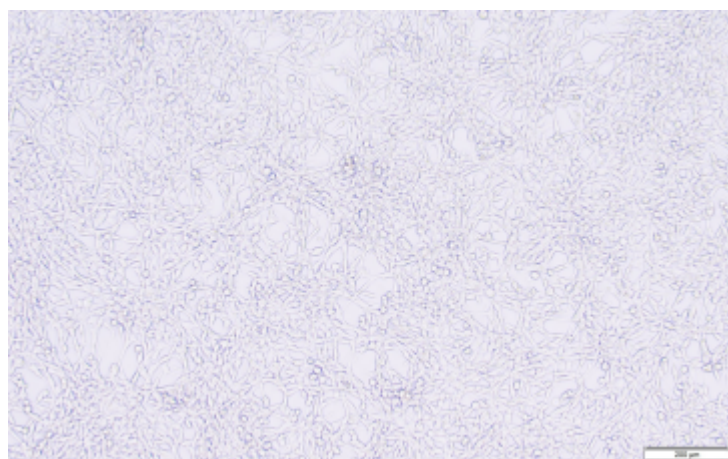
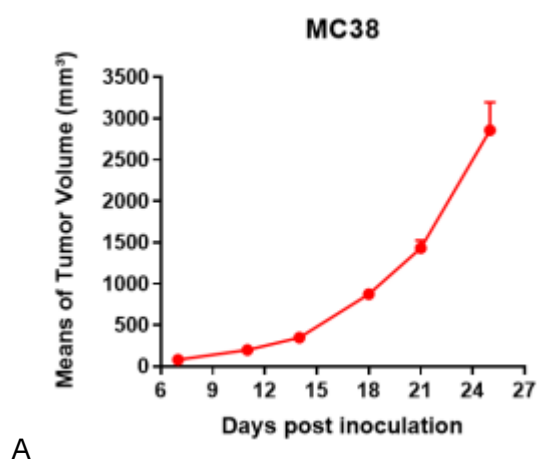
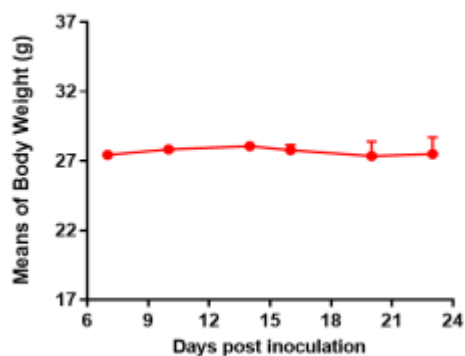


Fig1. Morphology of MC38 cell line.



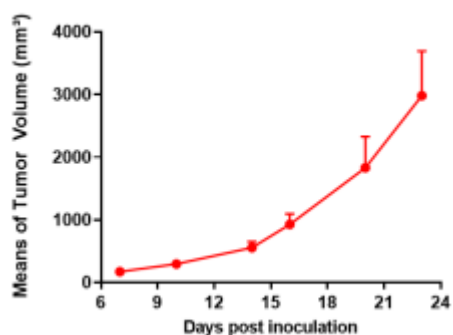
### MC38



B

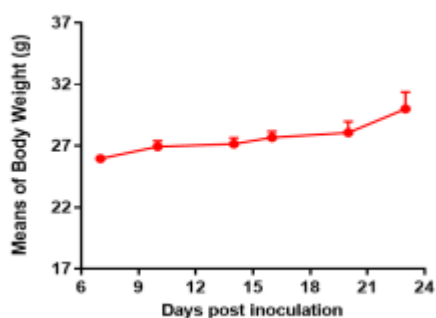
Fig2. Analysis of Tumorigenesis in C57BL/6 mice (n=5) . A Tumor volume was measured by time. B Body weight was simultaneously checked.

### MC38



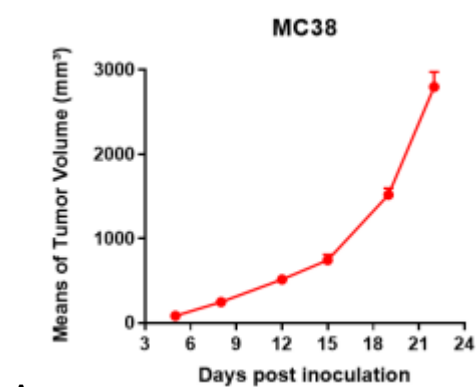
A

### MC38

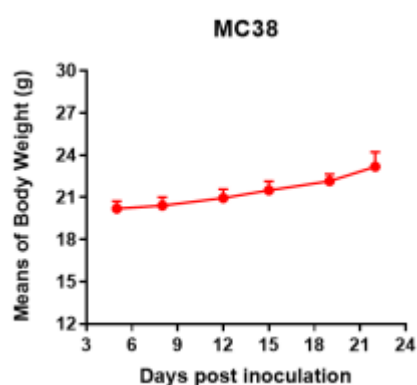


B

Fig3. Analysis of Tumorigenesis in hTREM2 mice (n=3) . A Tumor volume was measured by time. B Body weight was simultaneously checked.



A



B

Fig4. Analysis of Tumorigenesis in hTIGIT mice (n=6) . A Tumor volume was measured by time. B Body weight was simultaneously checked.

\*Wild-type cell lines are not for sale, and only applied to construction of tumor bearing mice and in-vivo efficacy studies.