

# 4T1

## Strain Information

Cat. NO.	NM-S07
Cell Line	4T1
Strain State	Validation of tumorigenic capacity
Model	Mouse breast cancer cell line
Description	*Literature published using this strain should indicate: 4T1 cell line (Cat. NO. NM-S07) was purchased from Shanghai Model Organisms Center, Inc..

## Validation Data

The 4T1 is a 6-thioguanine resistant cell line selected from the 410.4 tumor without mutagen treatment.

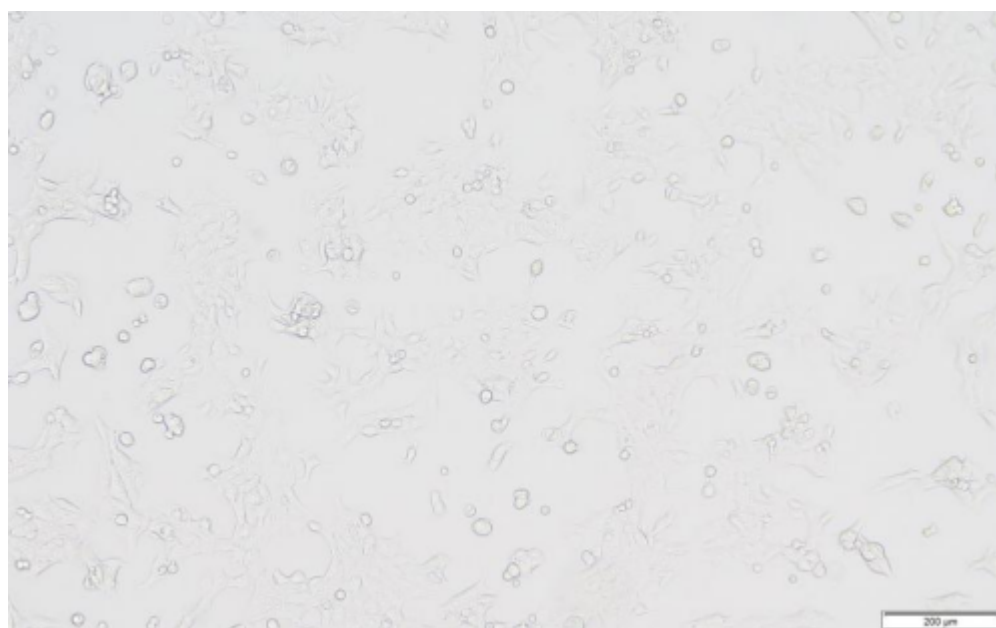


Figure 1. Morphology of 4T1 cell line

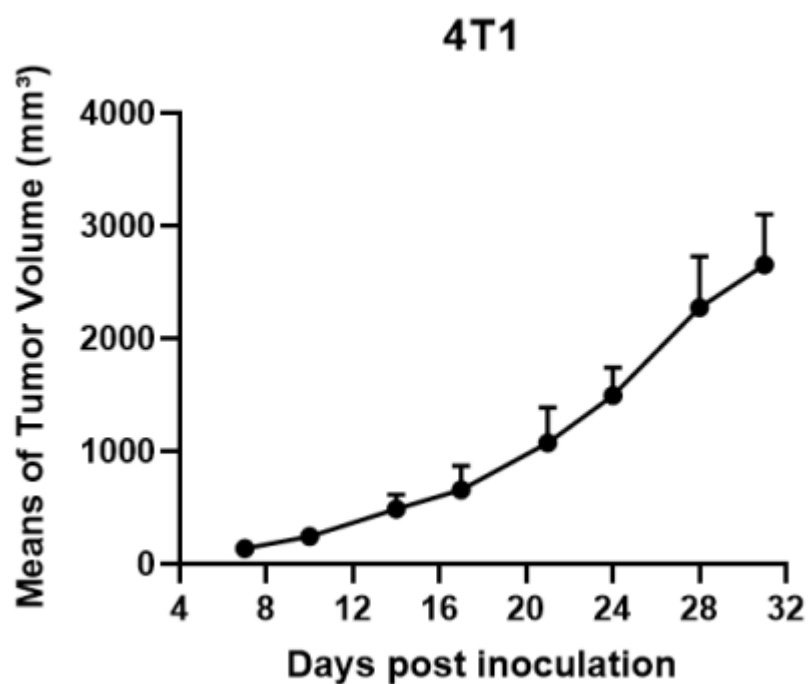


Figure 2. Tumor growth curve of 4T1 allogeneic model (n=5)

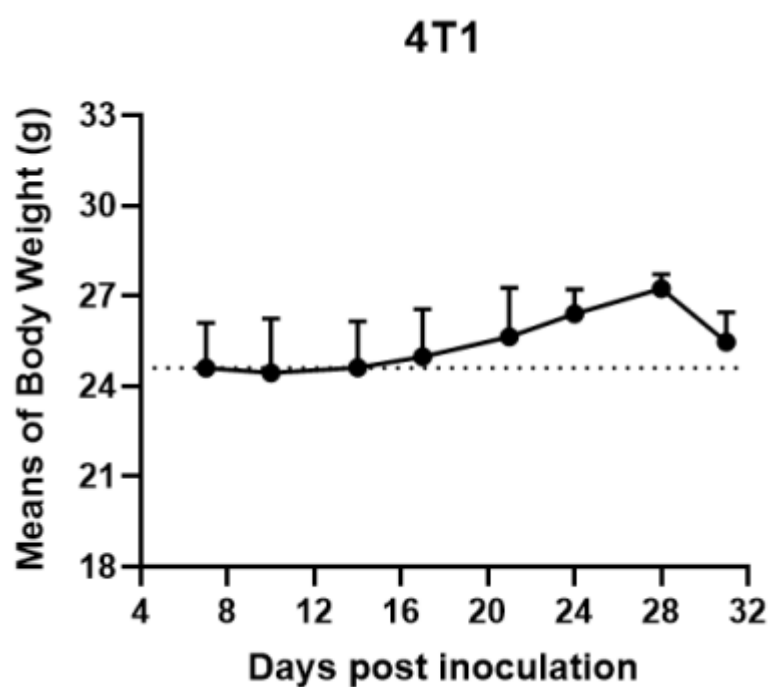


Figure 3. Body weight change of 4T1 allogeneic model (n=5)

\*Wild-type cell lines are not for sale, and only applied to construction of tumor bearing mice and in-vivo efficacy studies.