

A20

Strain Information

| | |
|--------------|---|
| Cat. NO. | NM-S26A |
| Cell Line | A20 |
| Strain State | Validation of tumorigenic capacity |
| Model | Mouse B cell lymphoma cell line |
| Description | *Literature published using this strain should indicate: A20 cell line (Cat. NO. NM-S26A) was purchased from Shanghai Model Organisms Center, Inc.. |

Validation Data

The A20 (A-20) is a BALB/c B cell lymphoma line derived from a spontaneous reticulum cell neoplasm found in an old BALB/cAnN mouse.

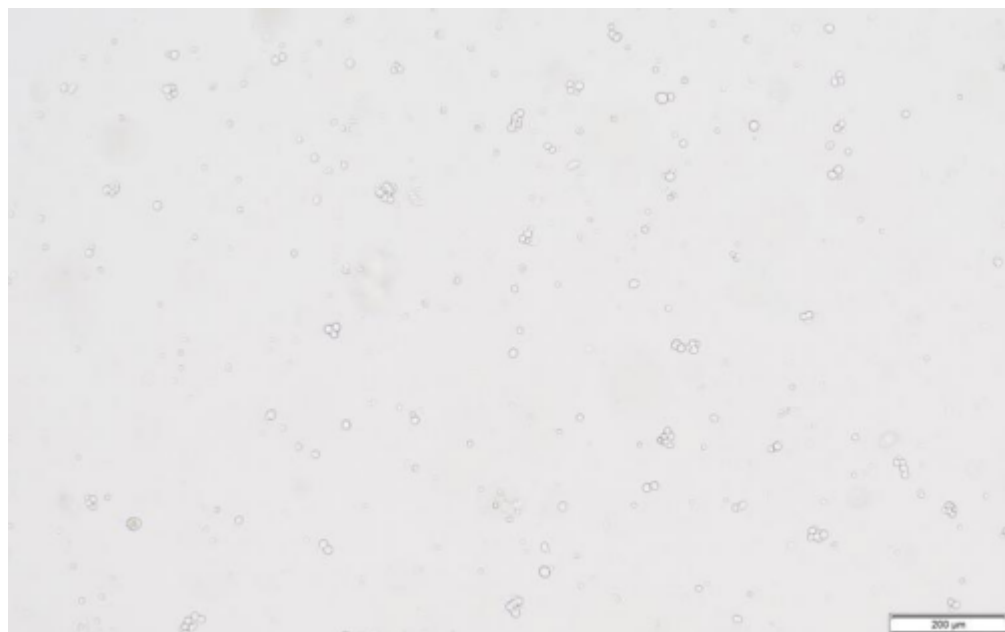


Figure 1. Morphology of A20 cell line

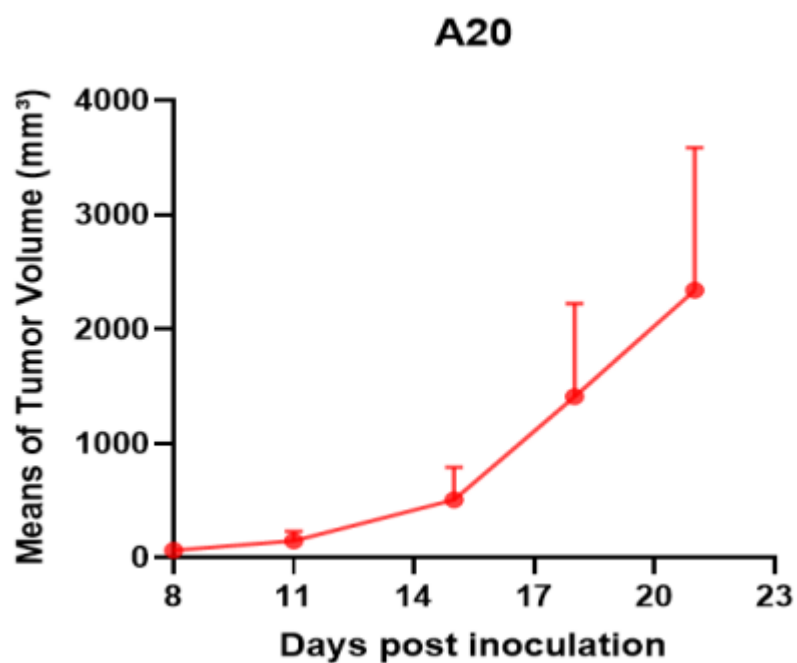


Figure 2. Tumor growth curve of A20 allogeneic model (n=5)

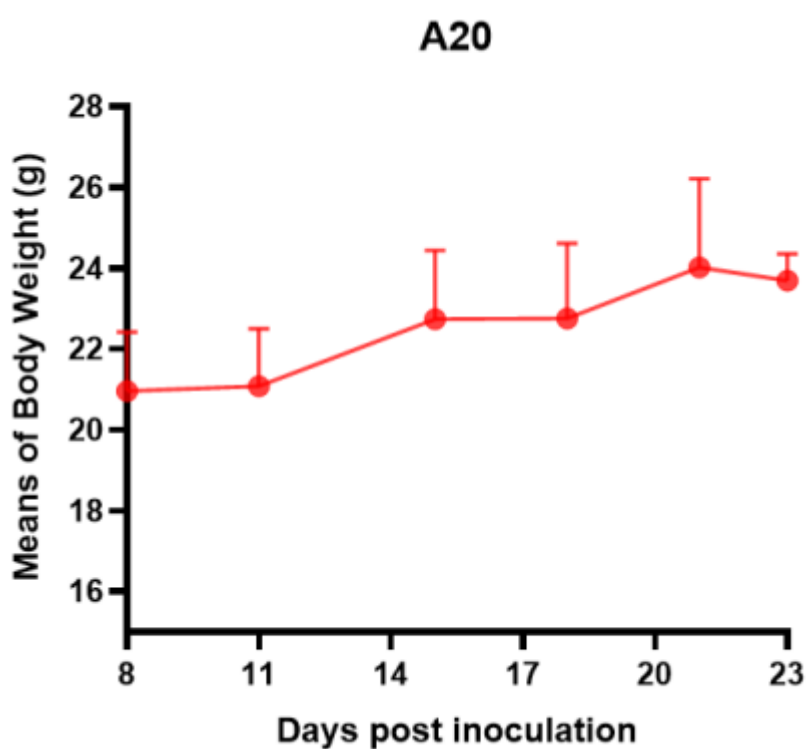


Figure 3. Body weight change of A20 allogeneic model (n=5)

*Wild-type cell lines are not for sale, and only applied to construction of tumor bearing mice and in-vivo efficacy studies.