

Renca

Strain Information

Cat. NO.	NM-S27A
Cell Line	Renca
Strain State	Validation of tumorigenic capacity completed
Model Description	The Renca cell line was derived from a tumor that arose spontaneously as a renal cortical adenocarcinoma in Balb/cCr mice.
	*Literature published using this strain should indicate: Renca cell line (Cat. NO. NM-S27A) was purchased from Shanghai Model Organisms Center, Inc..

Validation Data

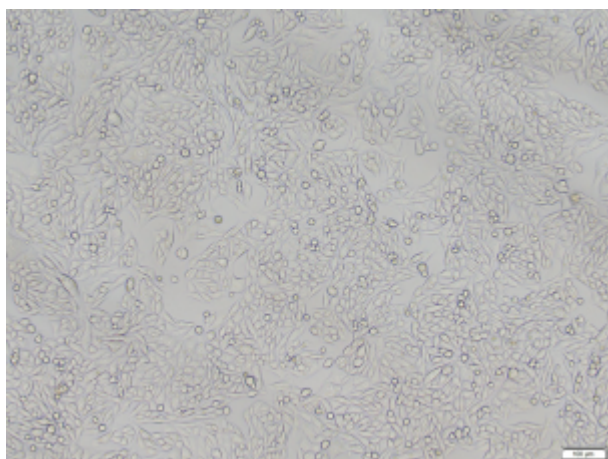


Fig1. Morphology of Renca cell line.

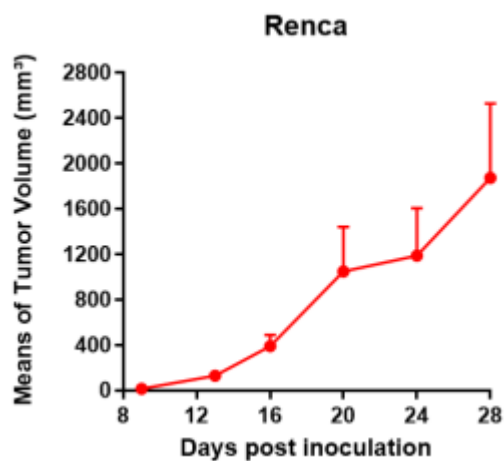


Fig2. Analysis of Tumorigenesis in Balb/c mice (n=4) .

*Wild-type cell lines are not for sale, and only applied to construction of tumor bearing mice and in-vivo efficacy studies.
