

# KPC

## Strain Information

|              |   |
|--------------|---|
| Cat. NO.     | NM-YD04   |
| Cell Line    | KPC   |
| Strain State | Validation of tumorigenic capacity completed  |
| Model        | The KPC Cell Line was derived from the KPC mice(NM-KI-210096).  |
| Description  | *Literature published using this strain should indicate: KPC cell line (Cat. NO. NM-YD04) was purchased from Shanghai Model Organisms Center, Inc.. |

## Validation Data

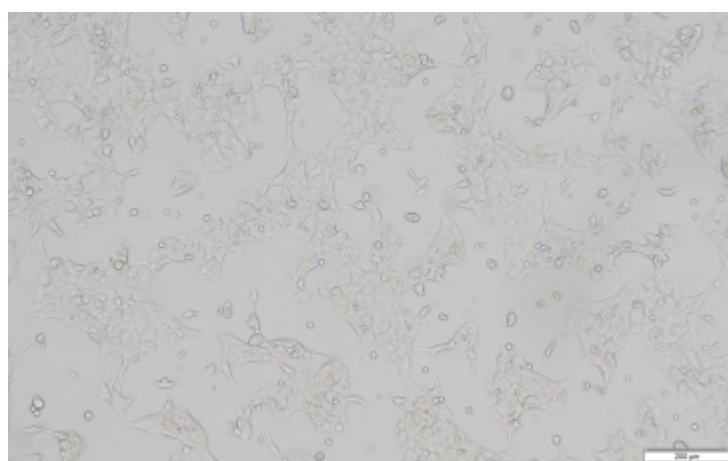
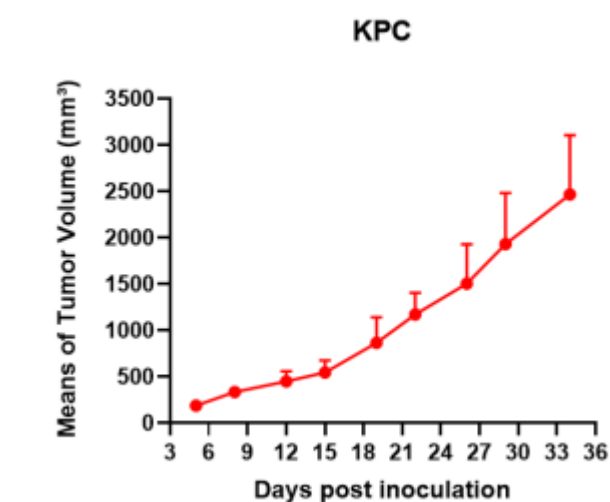
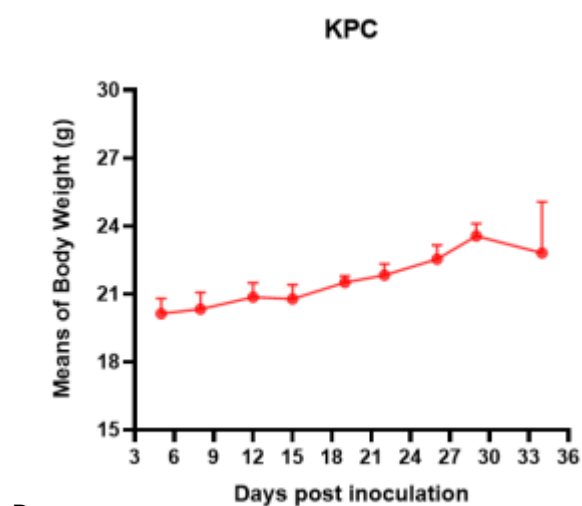


Fig1. Morphology of KPC cell line.



A



B

Fig2. Analysis of Tumorigenesis in C57BL/6 mice (n=6) . A Tumor volume was measured by time. B Body weight was simultaneously checked.