

## PC-3

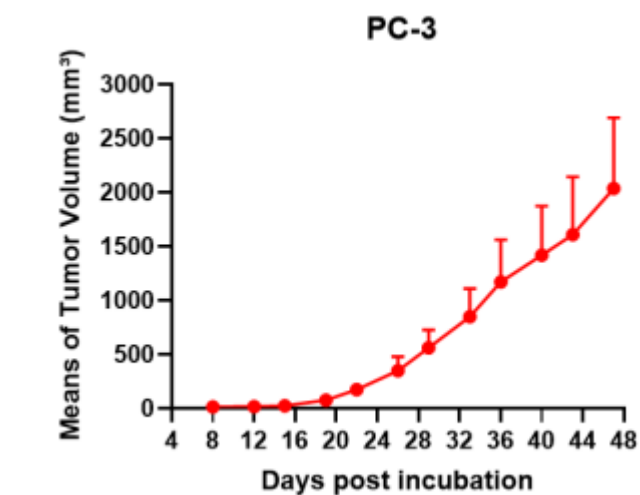
### Strain Information

Cat. NO.	NM-Q02
Cell Line	PC-3
Strain State	Validation of tumorigenic capacity completed
Model Description	PC-3 is a cell line initiated from a bone metastasis of a grade IV prostatic adenocarcinoma from a 62-year-old, White, male.  *Literature published using this strain should indicate: PC-3 cell line (Cat. NO. NM-Q02) was purchased from Shanghai Model Organisms Center, Inc..

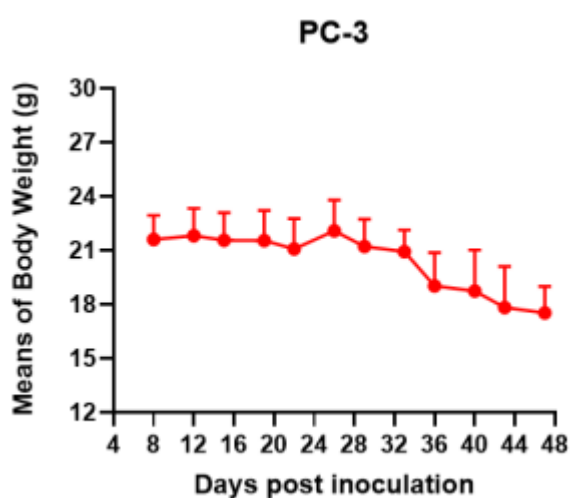
### Validation Data



Fig1. Morphology of PC-3 cell line.



A



B

Fig2. Analysis of Tumorigenesis in M-NSG mice (n=5) . A Tumor volume was measured by time. B Body weight was simultaneously checked.

\*Wild-type cell lines are not for sale, and only applied to construction of tumor bearing mice and in-vivo efficacy studies.