

# LNCaP clone FGC

## Strain Information

Cat. NO.	NM-Q03
Cell Line	LNCaP clone FGC
Strain State	Validation of tumorigenic capacity completed
Model Description	LNCaP clone FGC is a cell line exhibiting epithelial morphology that was isolated in 1977 by J.S. Horoszewicz, et al., from a needle aspiration biopsy of the left supraclavicular lymph node of a 50-year-old, White, male (blood type B+) with confirmed diagnosis of metastatic prostate carcinoma.
	*Literature published using this strain should indicate: LNCaP clone FGC cell line (Cat. NO. NM-Q03) was purchased from Shanghai Model Organisms Center, Inc..

## Validation Data

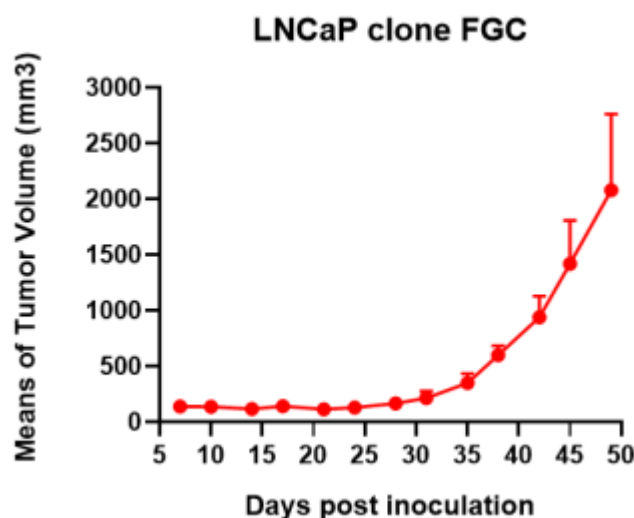


Fig1. Tumor growth curve of LNCaP clone FGC xenograft model (n=6)

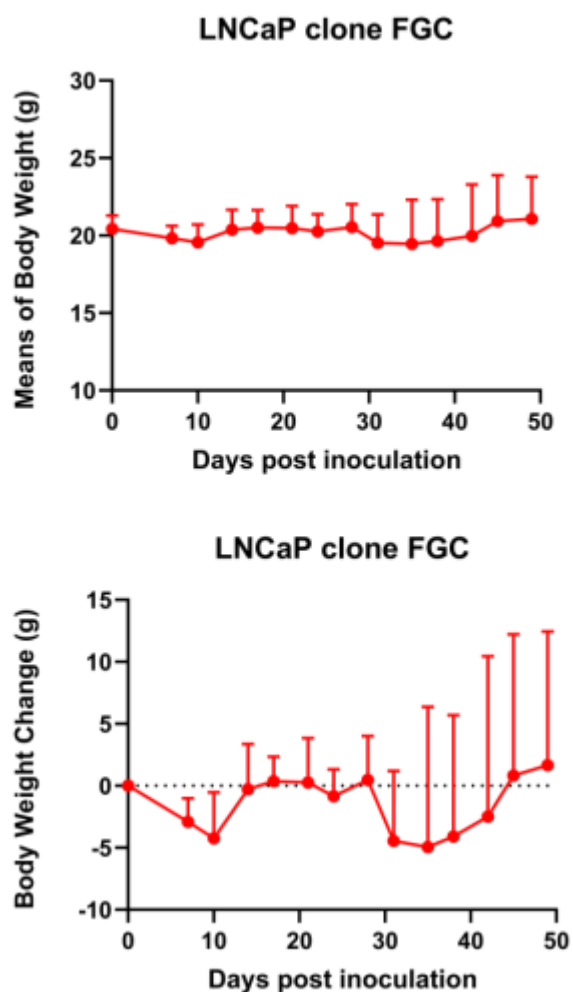


Fig2. Body weight change of LNCaP clone FGC xenograft model (n=6)

\*Wild-type cell lines are not for sale, and only applied to construction of tumor bearing mice and in-vivo efficacy studies.